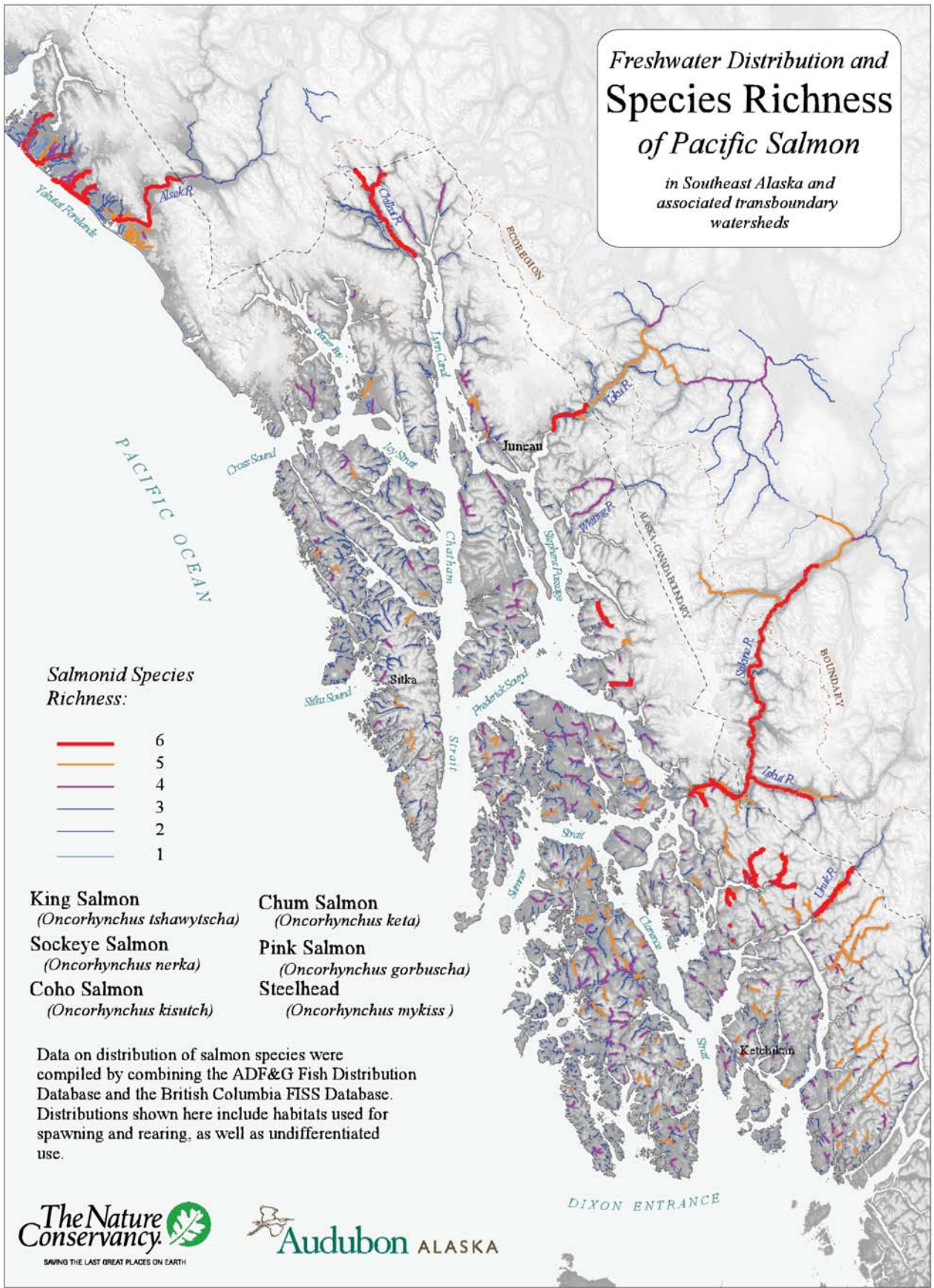


# Freshwater Distribution and Species Richness of Pacific Salmon

in Southeast Alaska and associated transboundary watersheds



### Salmonid Species Richness:



- King Salmon**  
*(Oncorhynchus tshawytscha)*
- Sockeye Salmon**  
*(Oncorhynchus nerka)*
- Coho Salmon**  
*(Oncorhynchus kisutch)*

- Chum Salmon**  
*(Oncorhynchus keta)*
- Pink Salmon**  
*(Oncorhynchus gorbuscha)*
- Steelhead**  
*(Oncorhynchus mykiss)*

Data on distribution of salmon species were compiled by combining the ADF&G Fish Distribution Database and the British Columbia FISS Database. Distributions shown here include habitats used for spawning and rearing, as well as undifferentiated use.

