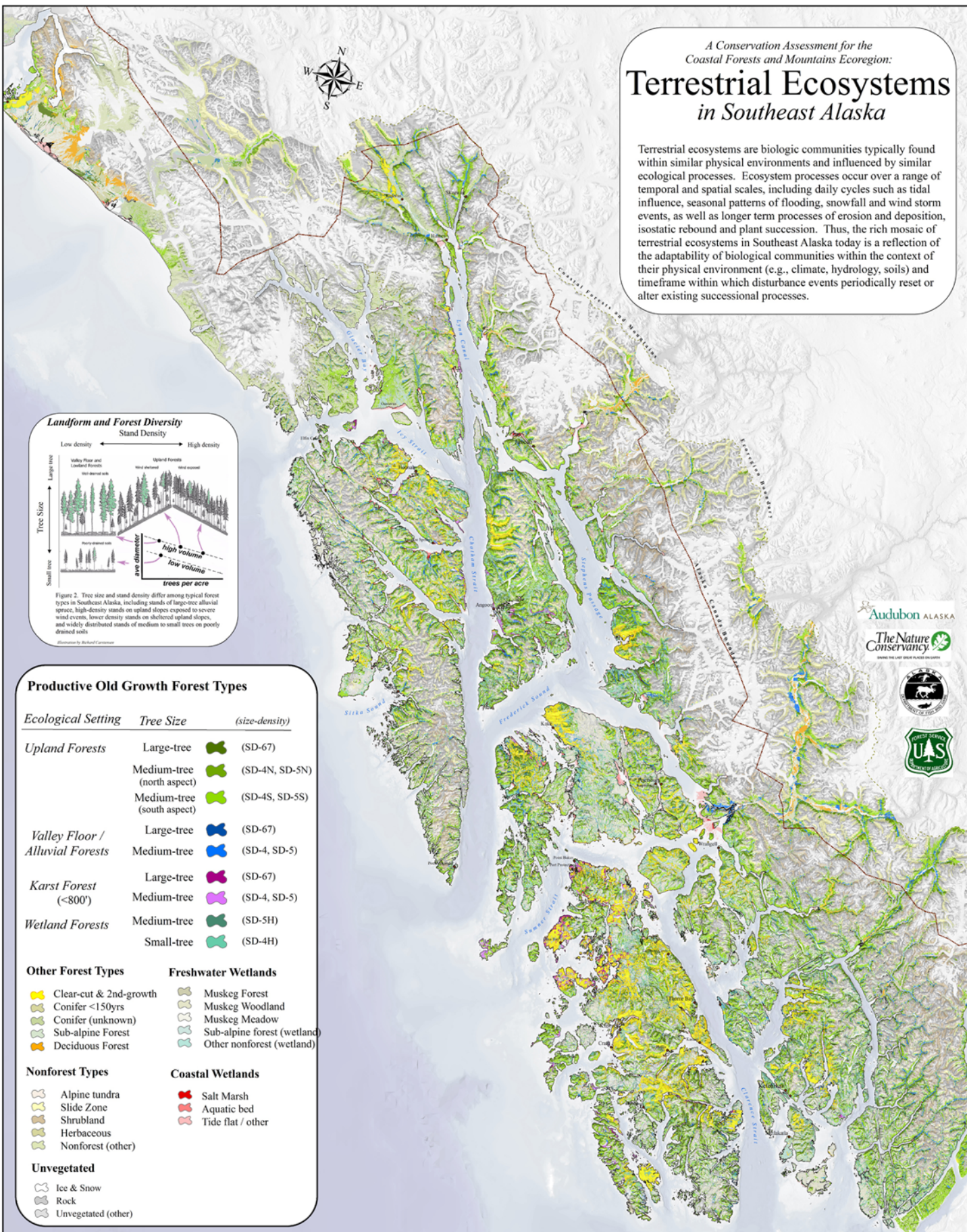


*A Conservation Assessment for the  
Coastal Forests and Mountains Ecoregion:*  
**Terrestrial Ecosystems  
in Southeast Alaska**

Terrestrial ecosystems are biologic communities typically found within similar physical environments and influenced by similar ecological processes. Ecosystem processes occur over a range of temporal and spatial scales, including daily cycles such as tidal influence, seasonal patterns of flooding, snowfall and wind storm events, as well as longer term processes of erosion and deposition, isostatic rebound and plant succession. Thus, the rich mosaic of terrestrial ecosystems in Southeast Alaska today is a reflection of the adaptability of biological communities within the context of their physical environment (e.g., climate, hydrology, soils) and timeframe within which disturbance events periodically reset or alter existing successional processes.



**Landform and Forest Diversity**

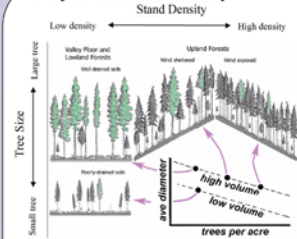


Figure 2. Tree size and stand density differ among typical forest types in Southeast Alaska, including stands of large-tree alluvial spruce, high-density stands on upland slopes exposed to severe wind events, lower density stands on sheltered upland slopes, and widely distributed stands of medium to small trees on poorly drained soils.

Illustration by Richard C. Conner

**Productive Old Growth Forest Types**

Ecological Setting	Tree Size	(size-density)
Upland Forests	Large-tree	(SD-67)
	Medium-tree (north aspect)	(SD-4N, SD-5N)
	Medium-tree (south aspect)	(SD-4S, SD-5S)
Valley Floor / Alluvial Forests	Large-tree	(SD-67)
	Medium-tree	(SD-4, SD-5)
Karst Forest (<800')	Large-tree	(SD-67)
	Medium-tree	(SD-4, SD-5)
Wetland Forests	Medium-tree	(SD-5H)
	Small-tree	(SD-4H)

**Other Forest Types**

- Clear-cut & 2nd-growth
- Conifer <150yrs
- Conifer (unknown)
- Sub-alpine Forest
- Deciduous Forest

**Freshwater Wetlands**

- Muskeg Forest
- Muskeg Woodland
- Muskeg Meadow
- Sub-alpine forest (wetland)
- Other nonforest (wetland)

**Nonforest Types**

- Alpine tundra
- Slide Zone
- Shrubland
- Herbaceous
- Nonforest (other)

**Coastal Wetlands**

- Salt Marsh
- Aquatic bed
- Tide flat / other

**Unvegetated**

- Ice & Snow
- Rock
- Unvegetated (other)

