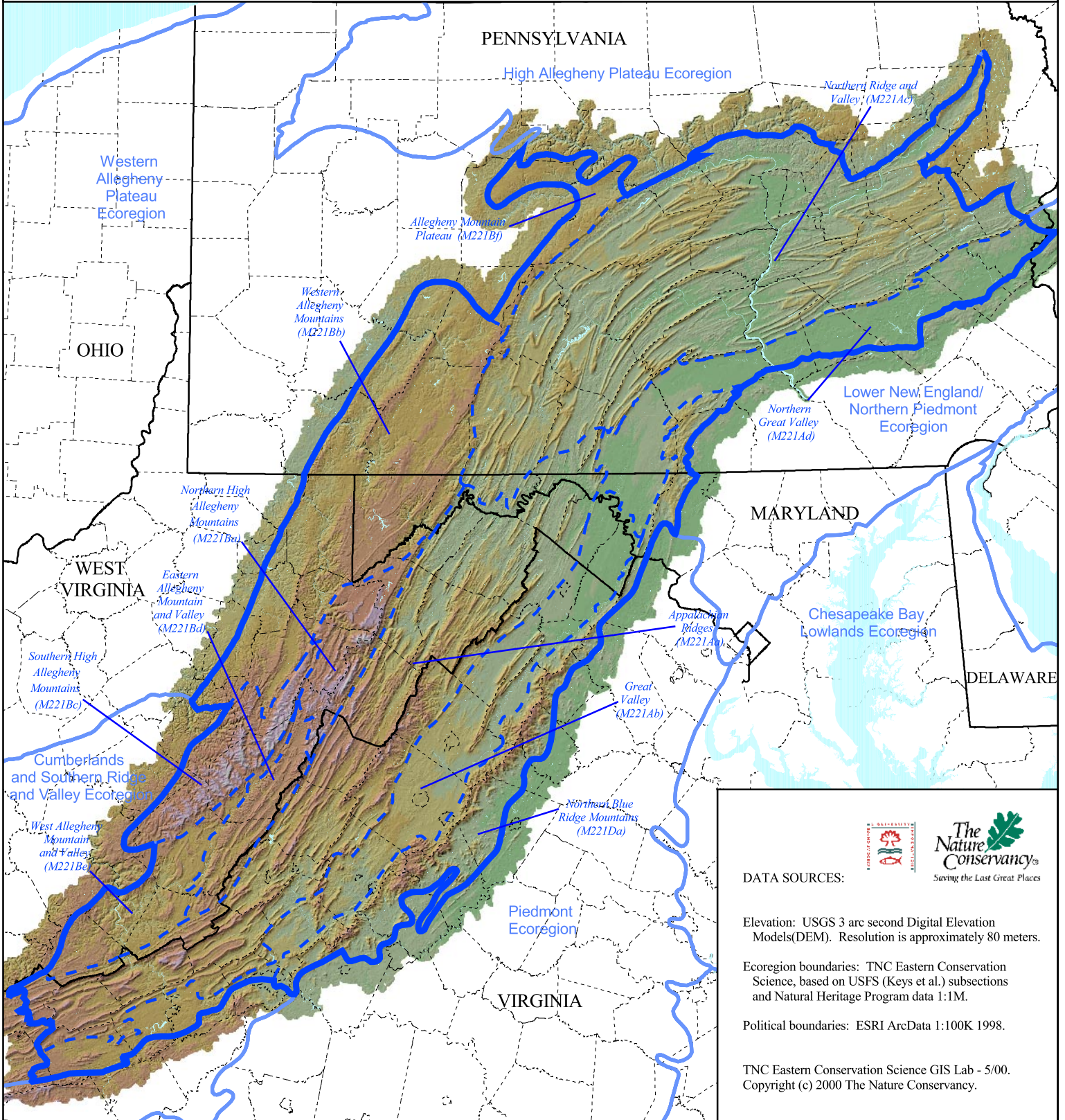
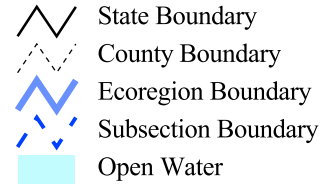
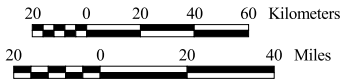




Map 2: Central Appalachian Ecoregion Topography

Elevation



SCALE 1:2,800,000



DATA SOURCES:

Elevation: USGS 3 arc second Digital Elevation Models(DEM). Resolution is approximately 80 meters.

Ecoregion boundaries: TNC Eastern Conservation Science, based on USFS (Keys et al.) subsections and Natural Heritage Program data 1:1M.

Political boundaries: ESRI ArcData 1:100K 1998.

TNC Eastern Conservation Science GIS Lab - 5/00.
Copyright (c) 2000 The Nature Conservancy.