

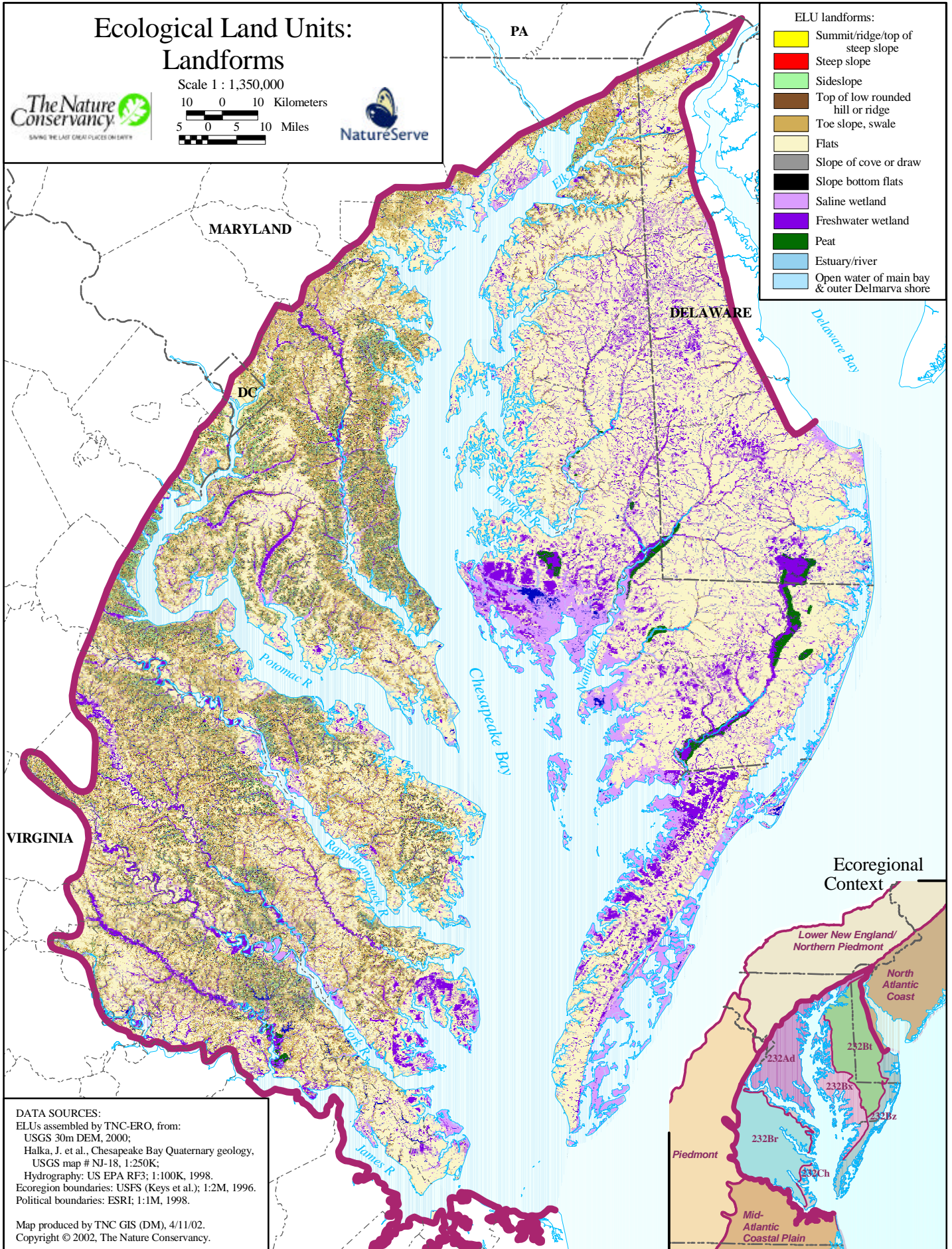
Ecological Land Units: Landforms



Scale 1 : 1,350,000
 10 0 10 Kilometers
 5 0 5 10 Miles



- ELU landforms:
- Summit/ridge/top of steep slope
 - Steep slope
 - Sideslope
 - Top of low rounded hill or ridge
 - Toe slope, swale
 - Flats
 - Slope of cove or draw
 - Slope bottom flats
 - Saline wetland
 - Freshwater wetland
 - Peat
 - Estuary/river
 - Open water of main bay & outer Delmarva shore



Ecoregional Context



DATA SOURCES:
 ELUs assembled by TNC-ERO, from:
 USGS 30m DEM, 2000;
 Halka, J. et al., Chesapeake Bay Quaternary geology,
 USGS map # NJ-18, 1:250K;
 Hydrography: US EPA RF3; 1:100K, 1998.
 Ecoregion boundaries: USFS (Keys et al.); 1:2M, 1996.
 Political boundaries: ESRI; 1:1M, 1998.

Map produced by TNC GIS (DM), 4/11/02.
 Copyright © 2002, The Nature Conservancy.