

High Allegheny Plateau Ecoregion

Animal Element Occurrences



SCALE 1 : 1,500,000
 10 0 10 20 Kilometers
 5 0 5 10 15 Miles



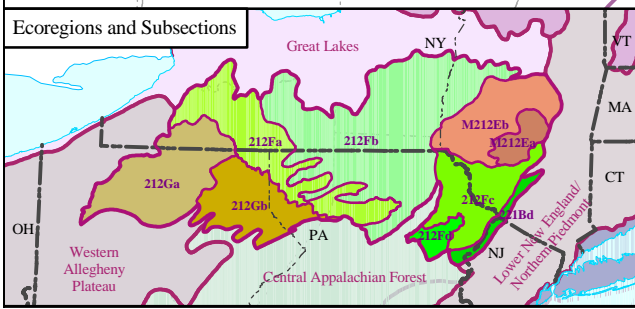
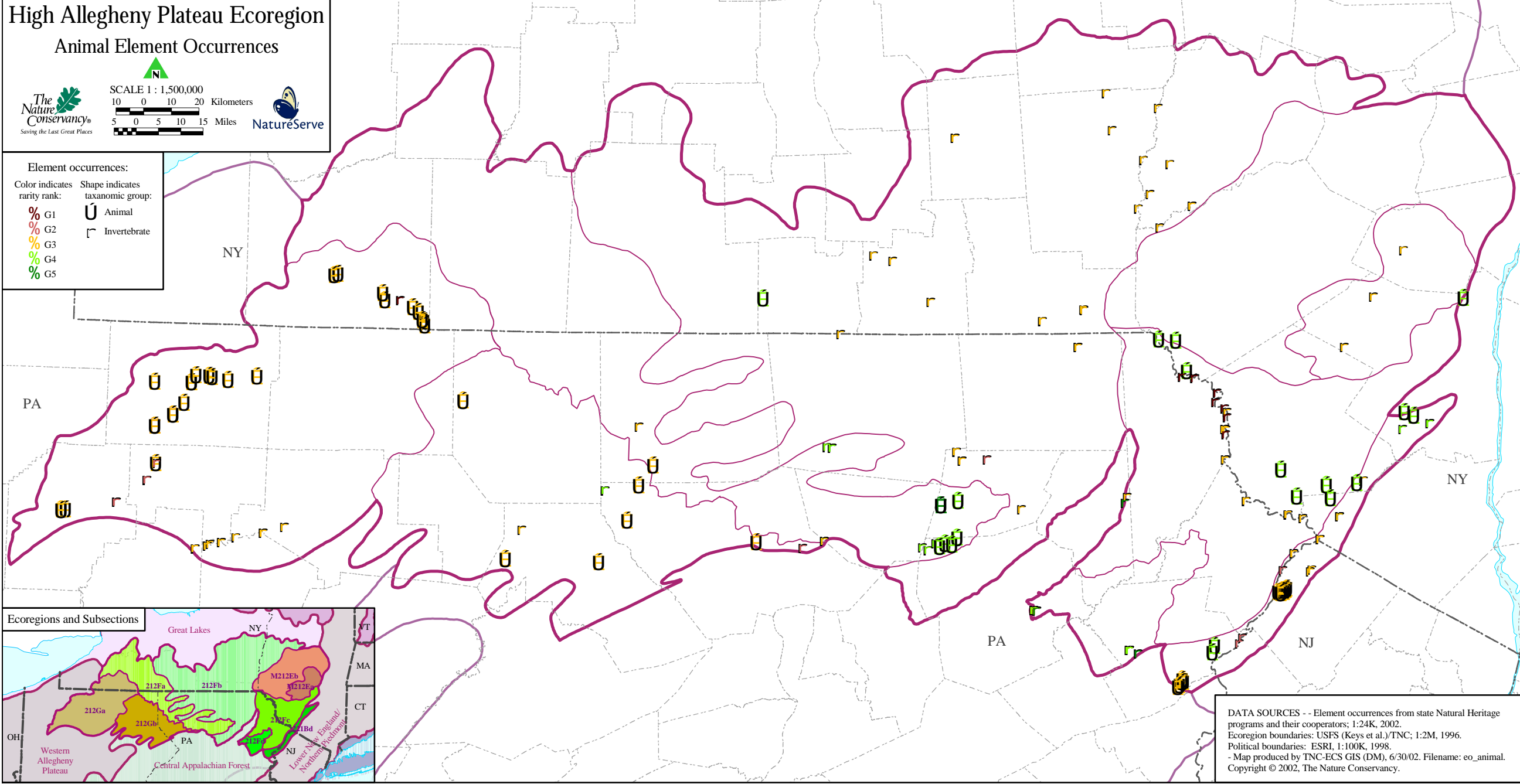
Element occurrences:

Color indicates rarity rank:

- % G1
- % G2
- % G3
- % G4
- % G5

Shape indicates taxonomic group:

- U Animal
- r Invertebrate



DATA SOURCES - - Element occurrences from state Natural Heritage programs and their cooperators; 1:24K, 2002.
 Ecoregion boundaries: USFS (Keys et al.)/TNC; 1:2M, 1996.
 Political boundaries: ESRI, 1:100K, 1998.
 - Map produced by TNC-ECS GIS (DM), 6/30/02. Filename: eo_animal.
 Copyright © 2002, The Nature Conservancy.