
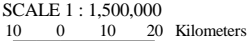
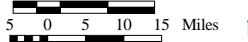




High Allegheny Plateau Ecoregion

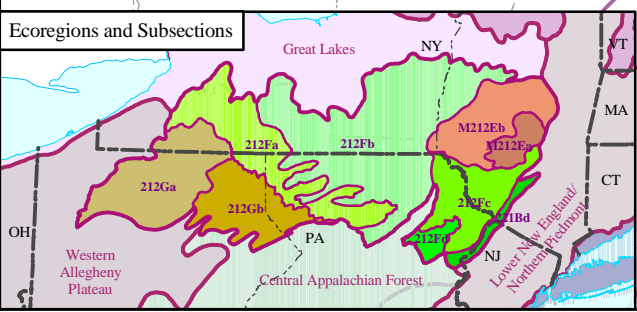
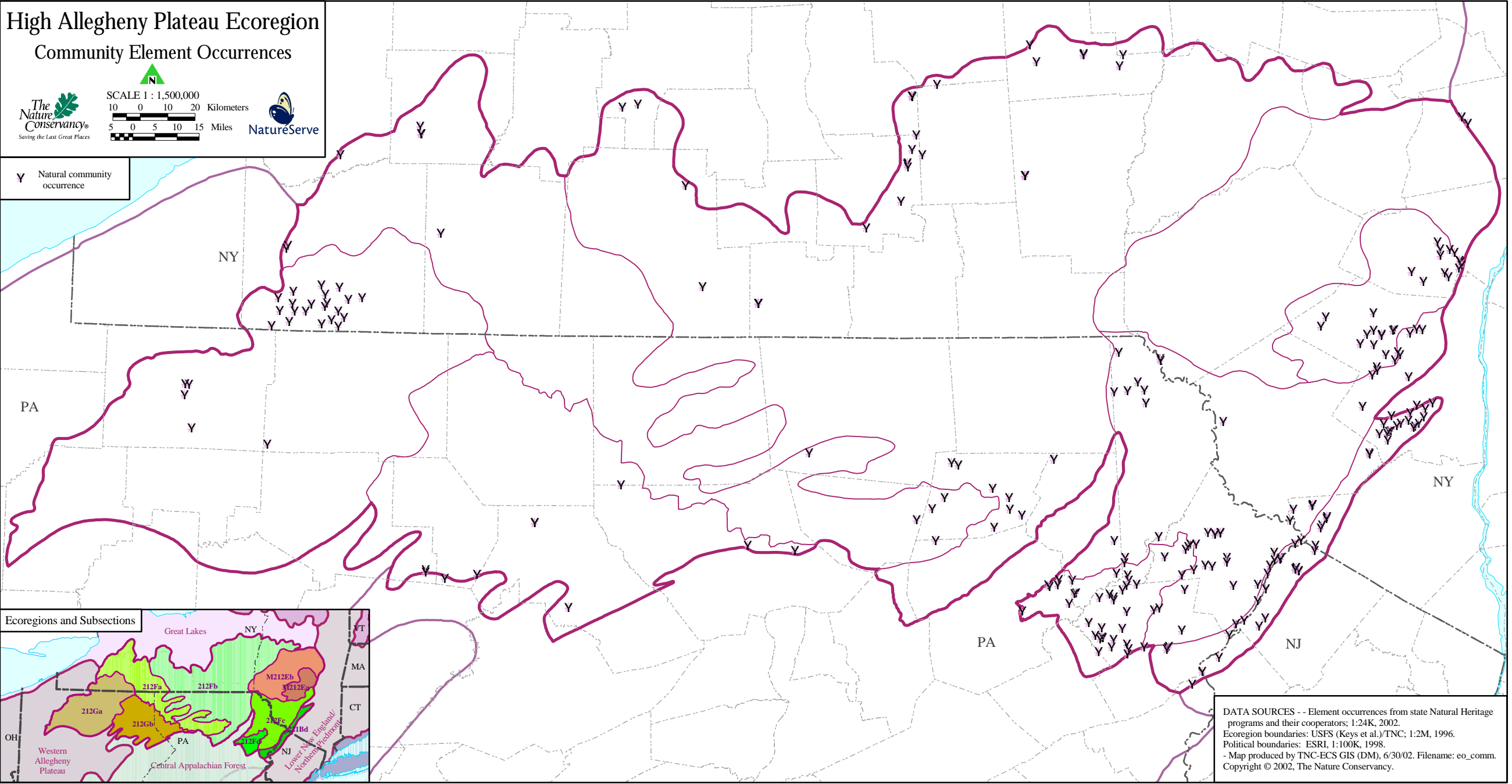
Community Element Occurrences



SCALE 1 : 1,500,000

Y Natural community occurrence



DATA SOURCES -- Element occurrences from state Natural Heritage programs and their cooperators; 1:24K, 2002.
 Ecoregion boundaries: USFS (Keys et al.)/TNC; 1:2M, 1996.
 Political boundaries: ESRI, 1:100K, 1998.
 - Map produced by TNC-ECS GIS (DM), 6/30/02. Filename: eo_comm.
 Copyright © 2002, The Nature Conservancy.