

# A landscape approach to mitigation in Mongolia

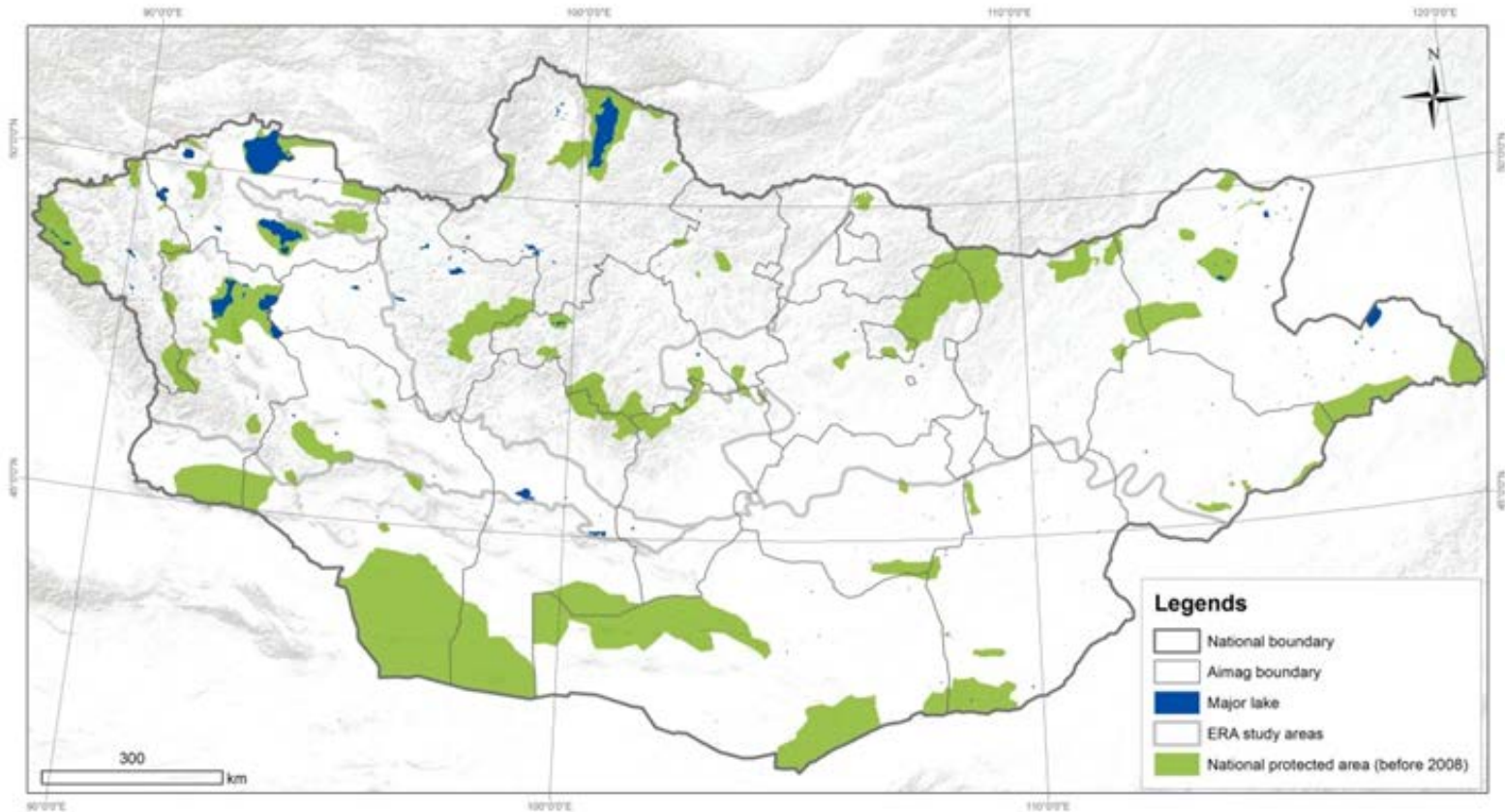


# Brief intro to Mongolia



- 1.5 million sq.km
- Population: appx 3 million
- Economy: Mining, Service, Livestock
- Public land ownership,

# Conservation history and culture



- Coexistence of nomadic people and nature,
- Good environmental policy and legal framework
- National goal to protect 30% of the country:
- Current protection: 17% of the country,





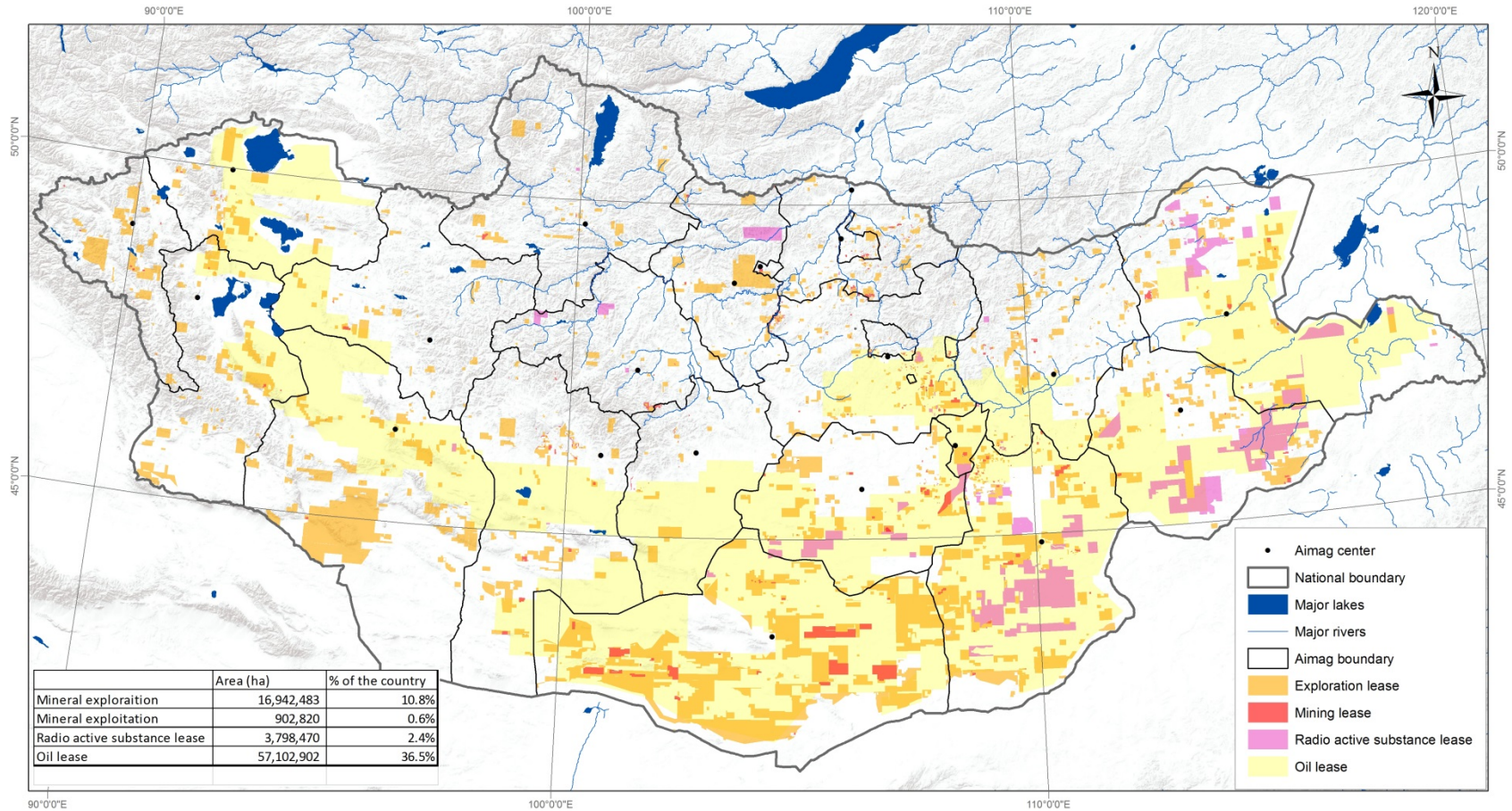
Photo: Ted Wood

# Challenges



- Estimated resources: USD 1 trillion
- Rapid economic development,
- Strong competing interests for land use,
- Balancing the demand for development with conservation goals,

# Mineral leases





# Preserving grasslands and water for people and wildlife





Photo: Kirk Olson



GSE  
827,000 km<sup>2</sup>



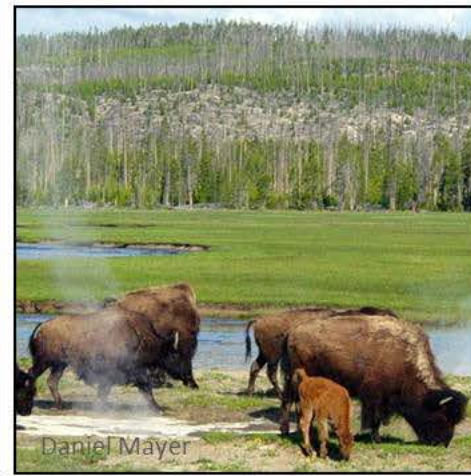
*Mongolian gazelle annual range*



*Khulan annual range*



GYE  
108,000 km<sup>2</sup>



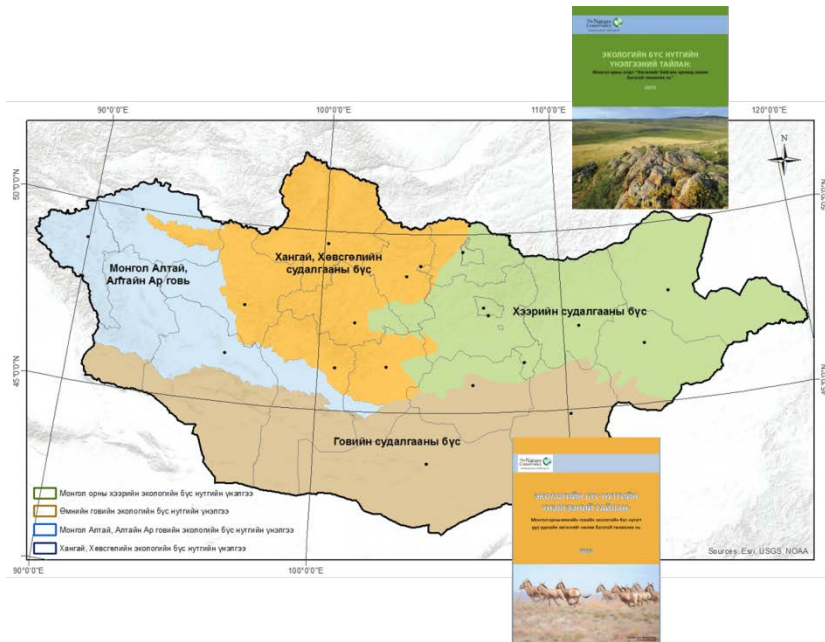
SME  
25,000 km<sup>2</sup>



NGR  
15,378 km<sup>2</sup>



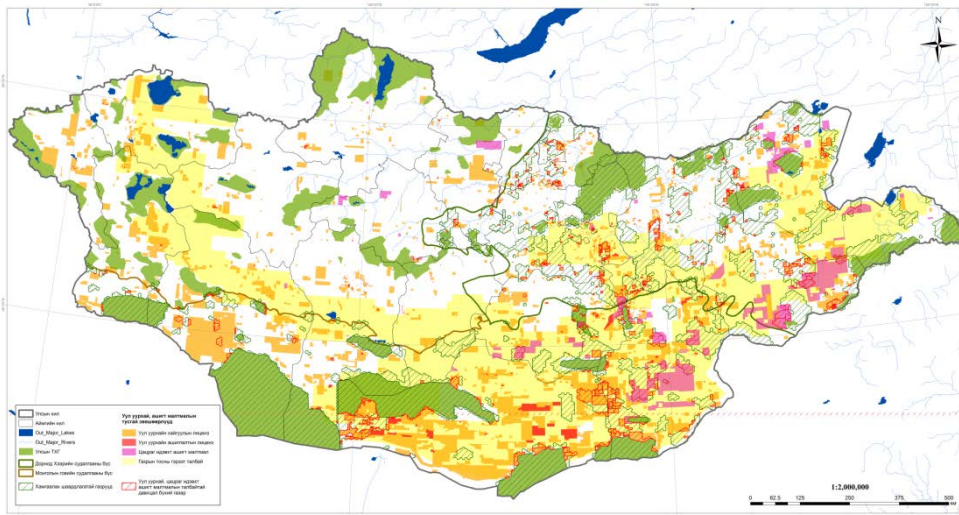
# What we are doing:



- Landscape level approach to mitigation,
- Demonstrate and replicate,
- Broad stakeholder engagement process

# Blending the conservation plan with mitigation

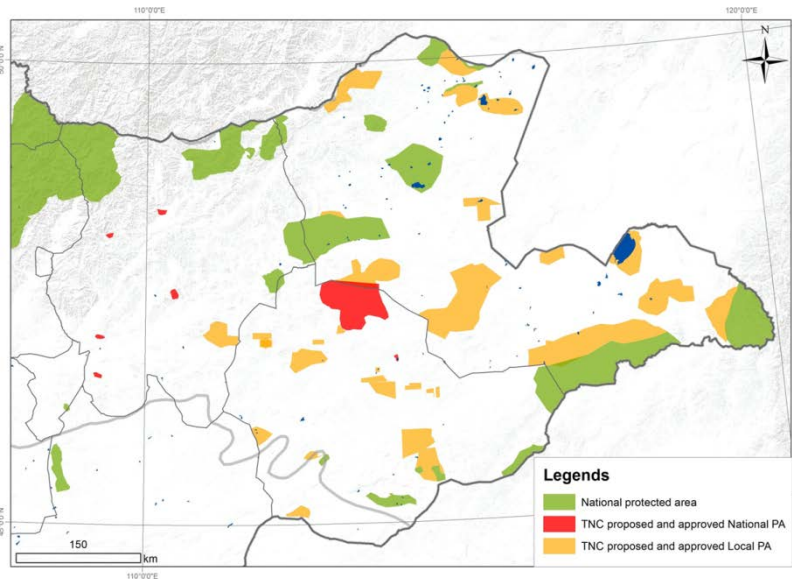
Хамгаалалтанд авах шаардлагатай газрууд ба ашигт малтмал, газрын тос болон цацраг идэвхт ашигт малтмалын тусгай зөвшөөрөл бүхий газруудтай давхцал үүсч буй газрууд



- Information to support decision making
- Proactive approach to mitigate the impacts: DbD



# Putting into practice:

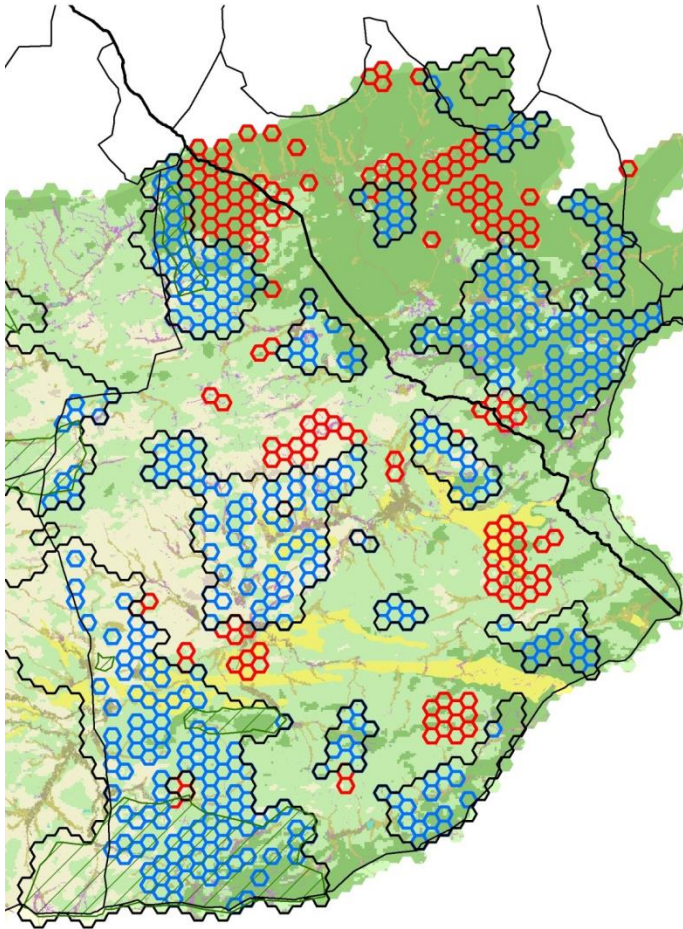


Avoid-Minimize/restore-Offset

## AVOID

- Designate new protected areas to avoid development (1 mln hectares-National PA),
- Preserving critical grasslands (1.8 mln hectares-Local PA),
- Protecting headwaters and riparian areas (no mining),

# Offset in practice



Example of an aggregate offset map

- EIA law and regulation(mandatory biodiversity offset),
- Industry practice: Ex: OT offset and other offset plans,
- Lenders standard Ex: IFC/EBRD,
- Incorporating into land use plans (ecosystem capacity based land use planning),
- Tools and data,
- Conservation financing,

# Lessons



Google image

- Enabling condition: Policy and regulations ,
- Coordination among line ministries and agencies,
- Willing industry partner to change the practice,
- Re-emphasize: Stakeholder engagement,
- Interpreting the science/tools into practice: DbD team work



# The future



©Ted Wood

- Ensuring economic growth,
- Achieving conservation goals,
- Protecting water and grasslands for the nomads