

LANDFIRE Office Hour: 6/26 - REGISTER (NO Office Hour Jul/Aug)

# LANDFIRE Brief

---



[View this email in your  
browser](#)

[Newsletter PDF](#)

[Forward this email to a friend](#)

## In this Brief:

- LANDFIRE Responds - New LANDFIRE website!
- Office Hour: New Methods Explained - Improving Vegetation
- Explaining New Methods to Update Vegetation Products (Quick read)
- Upcoming Product Release Schedule (Next up: July: NW GeoArea - LF 2023)

## LANDFIRE RESPONDS

Welcome to this new series where we communicate how LANDFIRE is responding to the changing needs of users.

**CHALLENGE:** Over the years the LANDFIRE team received feedback about the need to improve the design and usability of the LANDFIRE website. After nearly a year of work the website team was excited to launch the new LANDFIRE website\* in

May, 2024.

**SOLUTION:** This improvement establishes the new site on a more stable and secure server, allowing for a modern appearance. This transition will improve the user experience allowing for better site navigation while simultaneously improving the team's ability to make timely and useful website updates. Do you have feedback about the new design? Let us know: [helpdesk@landfire.gov](mailto:helpdesk@landfire.gov)

# Major Vegetation Improvements Coming:

## 1) LANDFIRE Office

### Hour:

LANDFIRE's New Methods Explained: Positive Implications for LF Updates

**June 26, 1 pm (ET)\***

**Speakers:** Daryn Dockter, TSSC Vegetation Ecologist

TSSC Vegetation Ecologist Daryn Dockter will explain the new methodology that was used to create LF 2023 Update. This involved using plot data containing height and cover estimates of herb, shrub and tree lifeforms to train models via relationships to raster pixel data such as LANDSAT imagery, vegetation indices, and topography.

**NOTE: No Office Hour July or**

## 2) LF 2023: Updating Our Vegetation Focus:

Explaining New Methods to Update Vegetation Products

LANDFIRE is now using up-to-date satellite imagery, lidar, and plot data with machine learning to annually update dominant lifeforms in areas that have been disturbed over the last two decades. Additionally, LF is updating vegetation layers (EVC, EVI) of the dominant life form for disturbed areas.

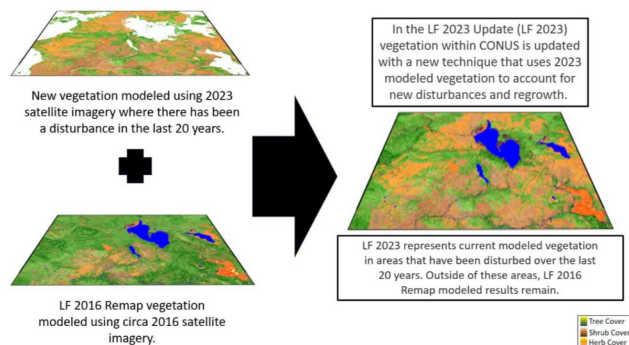


Figure 1: Visual representation of how LANDFIRE is overlaying new modeled vegetation in areas that have been disturbed.

August.

[REGISTER](#)

[READ STORY](#)

### Upcoming LF Release Schedule:

LOCATION	LANDFIRE PRODUCT	DATE
Great Basin & SW	Spring Seasonal MoD-FIS	June ✓
Northwest	LF 2023 Disturbance, Vegetation, Fuel	July
Great Basin & SW	Summer Seasonal MoD-FIS	July
Southwest	Fall Seasonal MoD-FIS	September
NE, NC, SC, SE	LF 2023 Disturbance, Vegetation, Fuel	October
Alaska	Annual Disturbance	October
CONUS, AK, HI, PRVI	Public Events	October

**FULL RELEASE  
SCHEDULE**

**LEARN ABOUT  
LANDFIRE VERSIONS**

# **LANDFIRE**

## **Program Management**



Henry Bastian  
DOI Business Lead

Inga La Puma  
USFS Program Lead

Jim Menakis  
USFS Business Lead

Tobin Smail  
USFS Fuels Lead

Jon Dewitz  
Acting USGS Project Manager

Jim Smith  
TNC LF Program Lead

Daryn Dockter  
LF TSSC Technical Lead

Marcine Hyser  
TSSC Task Manager