

[Get registered for 2025 Office Hours here](#)

LANDFIRE

• DATA ALERT •



[View in browser](#)

[See PDF](#)

[Forward email](#)

LF 2024 Update: Alaska Available NOW

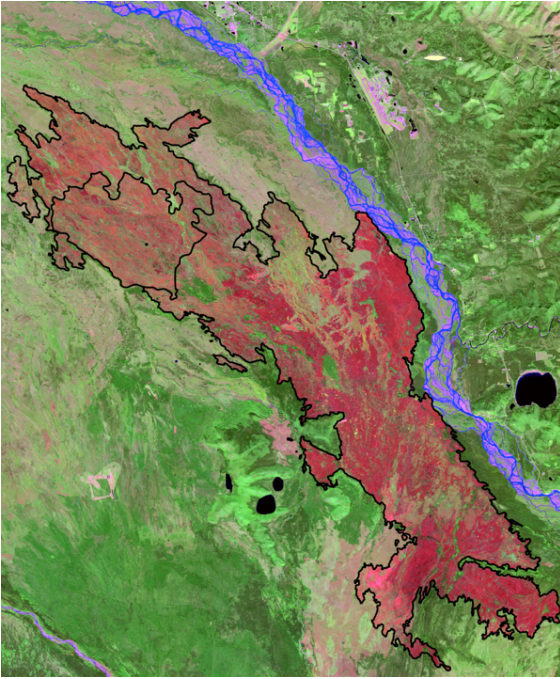
Make sure you have the most up-to-date LANDFIRE products - LF 2024 Alaska is out!

A note on Alaska data: Alaska Preliminary and Final Annual Disturbance products will now use imagery to estimate severity (High, Moderate, Low, and No severity) similar to CONUS. Severity assignments from fire programs such as MTBS, RAVG, and BARC will continue to be used and prioritized.

[Get Data](#)

Learn more about severity assignment improvements for Alaska in LF 2024:

This burn scar represents two 2024 fire scars captured in the LF 2024 Update

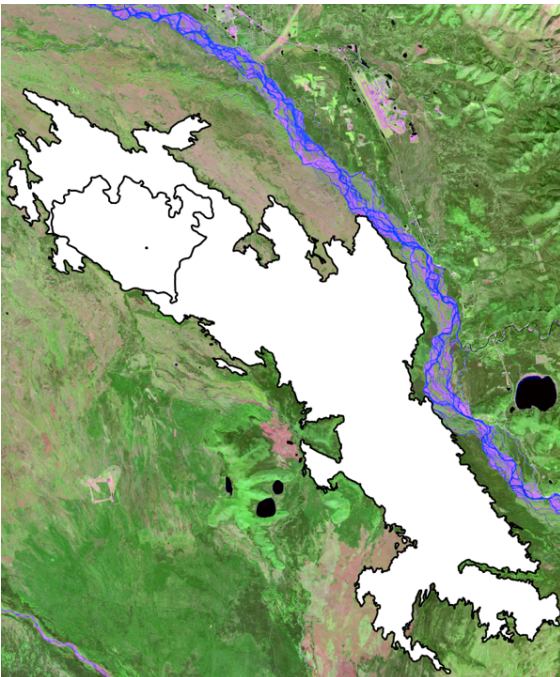


for AK.

The small perimeter is the fire scar from the Clear Fire.

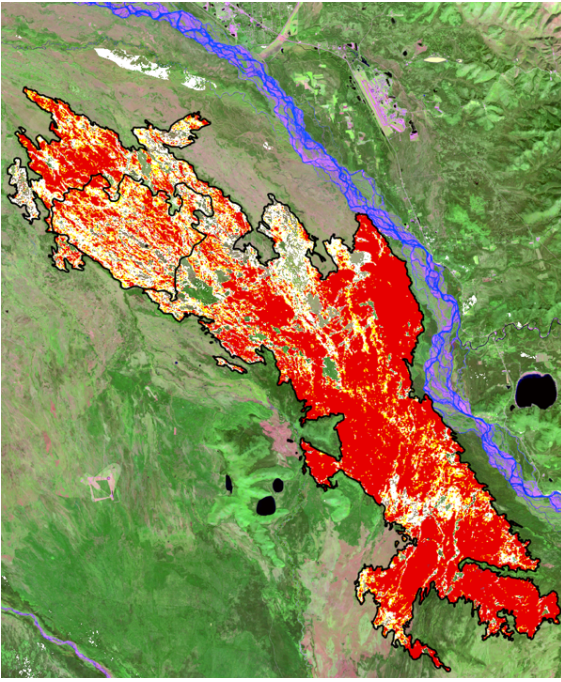
The larger perimeter is from the McDonald Fire.

Both fires burned from June to September 2024.



In previous years, these fire scars in AK Disturbance would look like this. All white within the perimeters indicating Low severity. In the past, if a severity wasn't indicated in the agency submitted data attributes, the default severity assignment was "No severity". Then LANDFIRE Fuel Disturbance (FDist) rules would re-reassign these areas to Low severity, so that there was at least representation of severity in some capacity versus none.

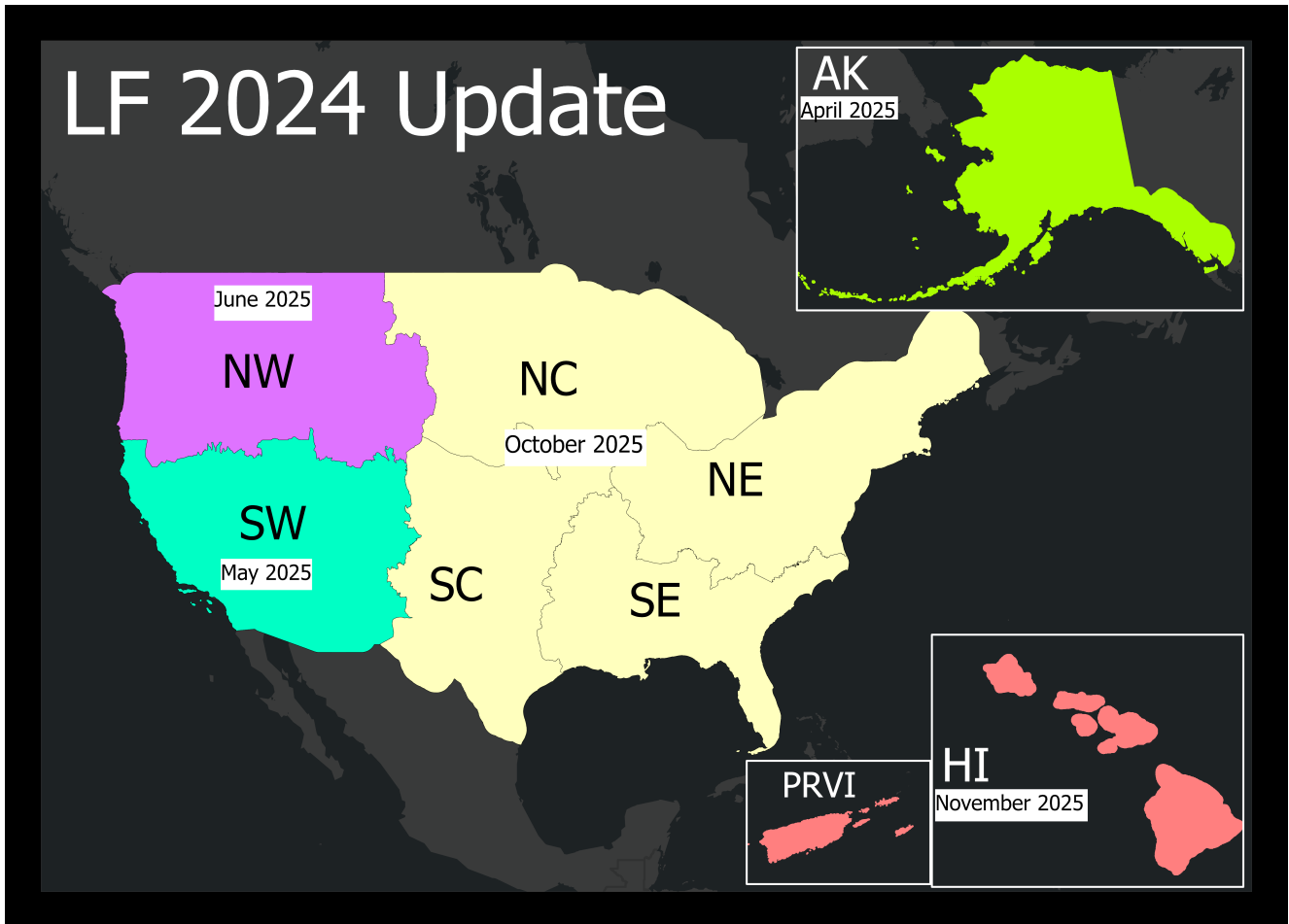
However, in those cases, burns experiencing High and Moderate severity were grossly underestimated. Additionally, areas that received no fire damage were incorrectly assigned as a Low severity.



In LF 2024, LANDFIRE wanted to improve this.

The fire severity assignments derived from pre- and post-fire images include 4 classes: Non-burned, Low, Moderate, and High.

In this graphic the clear areas inside the perimeters are non-burned, followed by white (Low severity), yellow (Moderate severity), and red (High severity).



Get in touch with the LANDFIRE helpdesk



Copyright (C) 2025 LANDFIRE & TNC. All rights reserved.

You are receiving this e-mail because you opted in to LANDFIRE Data Alerts. If your interests have changed, no problem, simply unsubscribe.