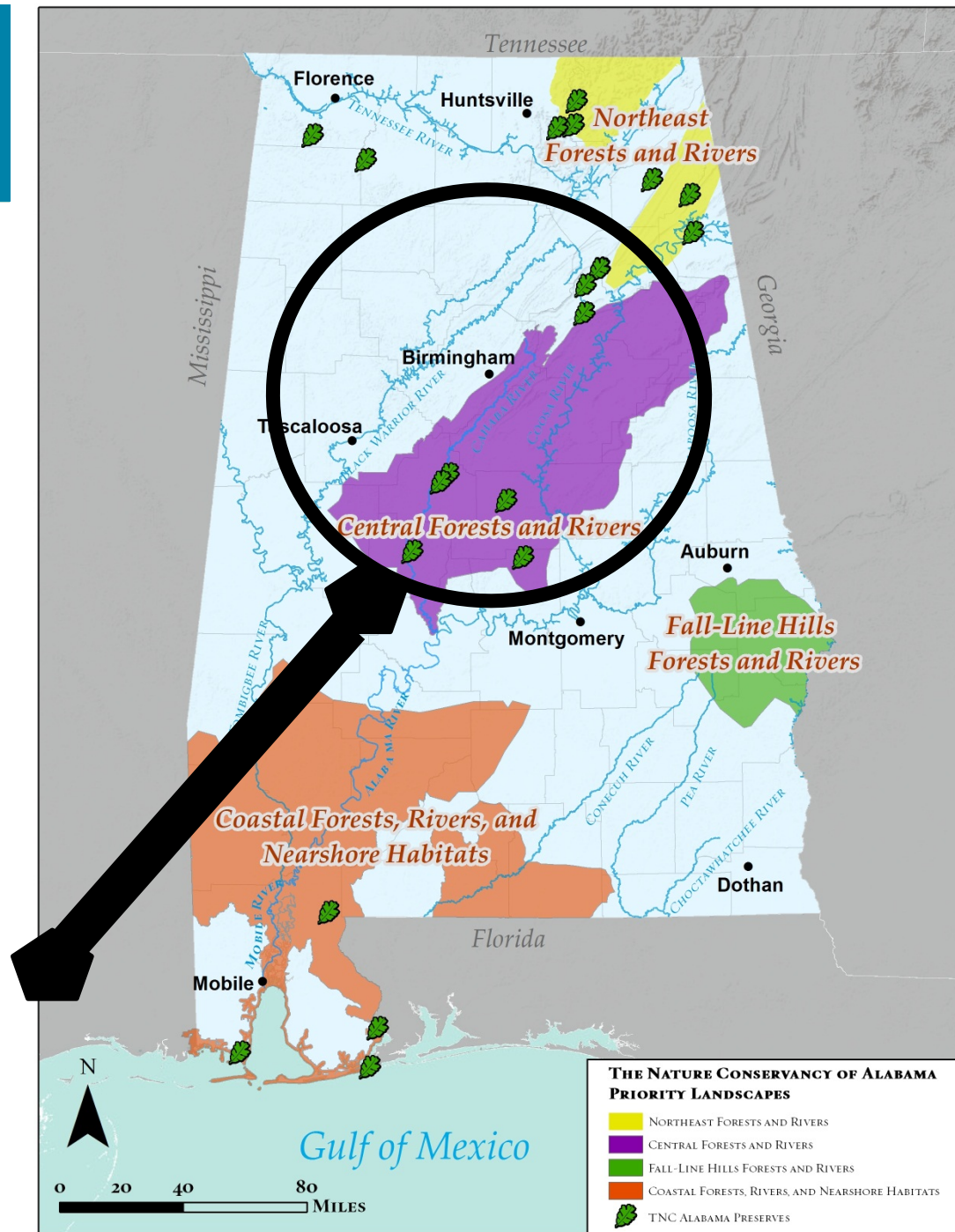


# Looking through a bigger lens in Alabama

February 12, 2014  
Marine Aggregation  
Silo-Busting Session

Mary Kate Brown  
Coastal Conservation Specialist  
[mkbrown@tnc.org](mailto:mkbrown@tnc.org)



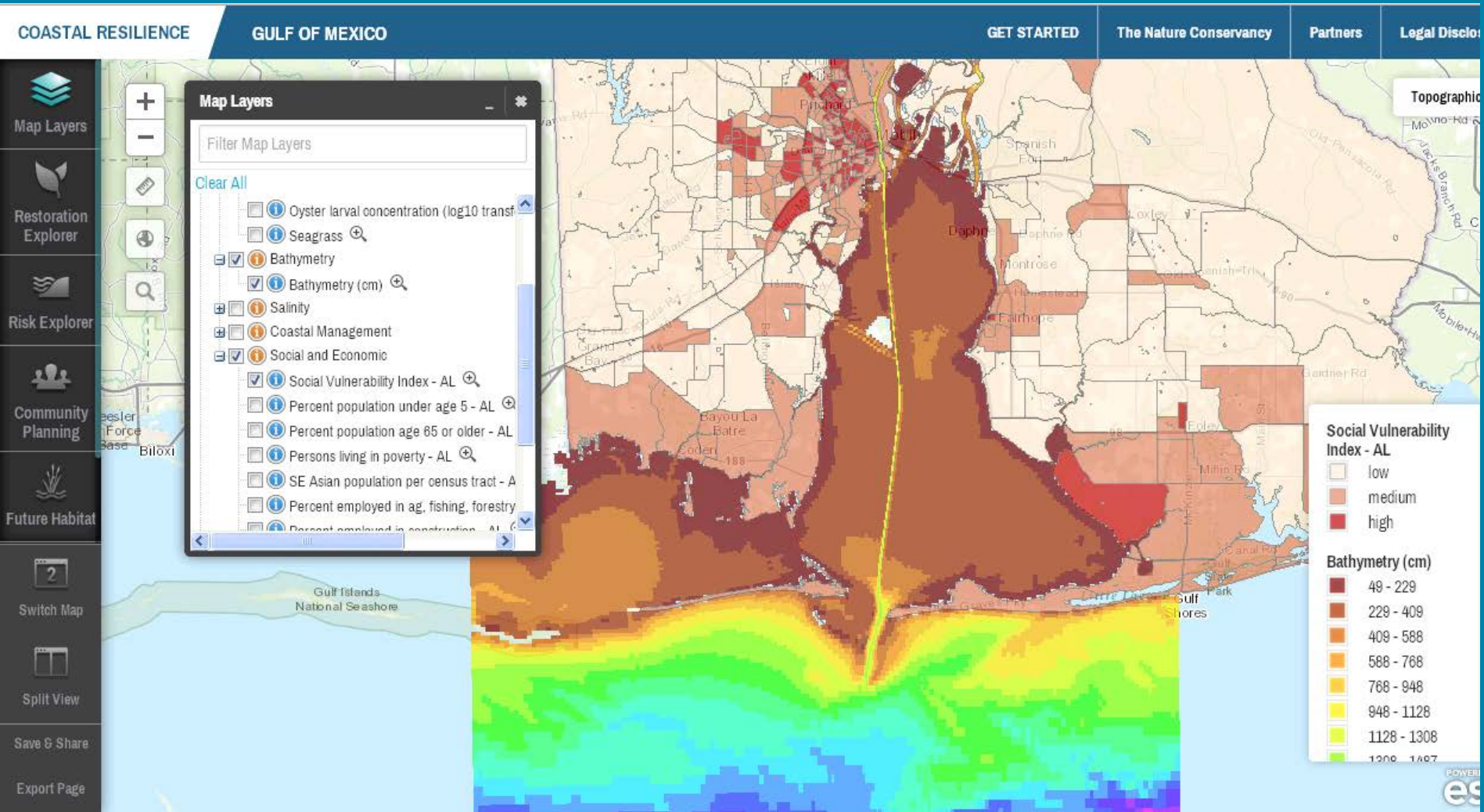
## Projects and Tools in Study

- **Coastal Resilience 2.0** – upgrade from original version “Gulf Decision Support Tool” - spearheaded by the TNC Global Marine Team
- **Southeast Aquatic Connectivity Assessment Project (SEACAP)** – spearheaded by TNC, Southeast Aquatics Resources Partnership (SARP), and South Atlantic Landscape Conservation Cooperative (SA LCC)
- **Stream Classification System in Appalachian Landscape Conservation Cooperative (APP LCC)** – spearheaded by Eastern Division TNC with help of post-doctoral student
- **Southeast Resilience Project** – spearheaded by Eastern Division TNC

# Coastal Resilience 2.0 (Basic Layers)

<http://maps.coastalresilience.org/network/>

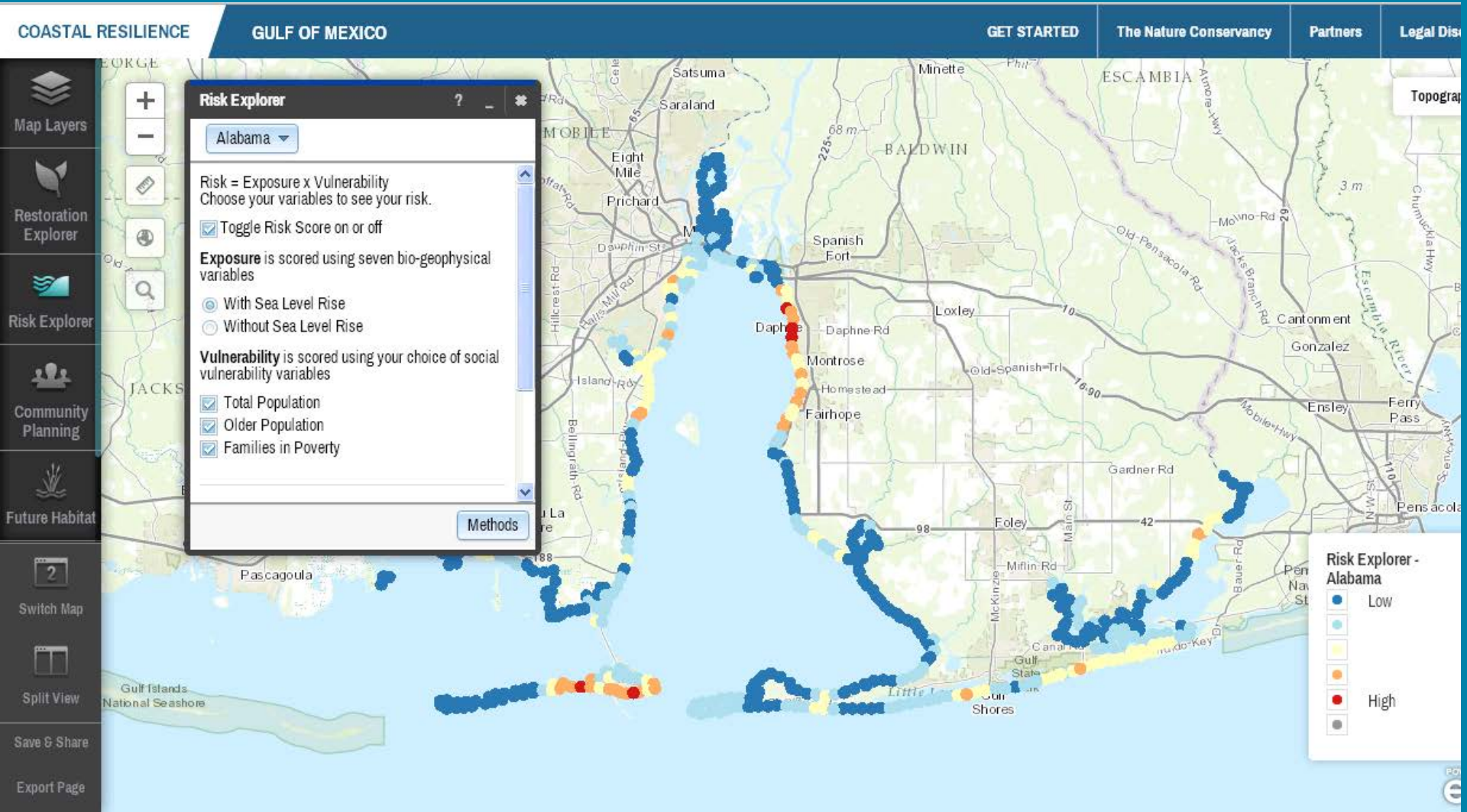
<http://coastalresilience.org/geographies/gulf-mexico>



# Coastal Resilience 2.0 (Risk Explorer)

<http://maps.coastalresilience.org/network/>

<http://coastalresilience.org/geographies/gulf-mexico>



# Southeast Aquatic Connectivity Assessment Project (SEACAP)



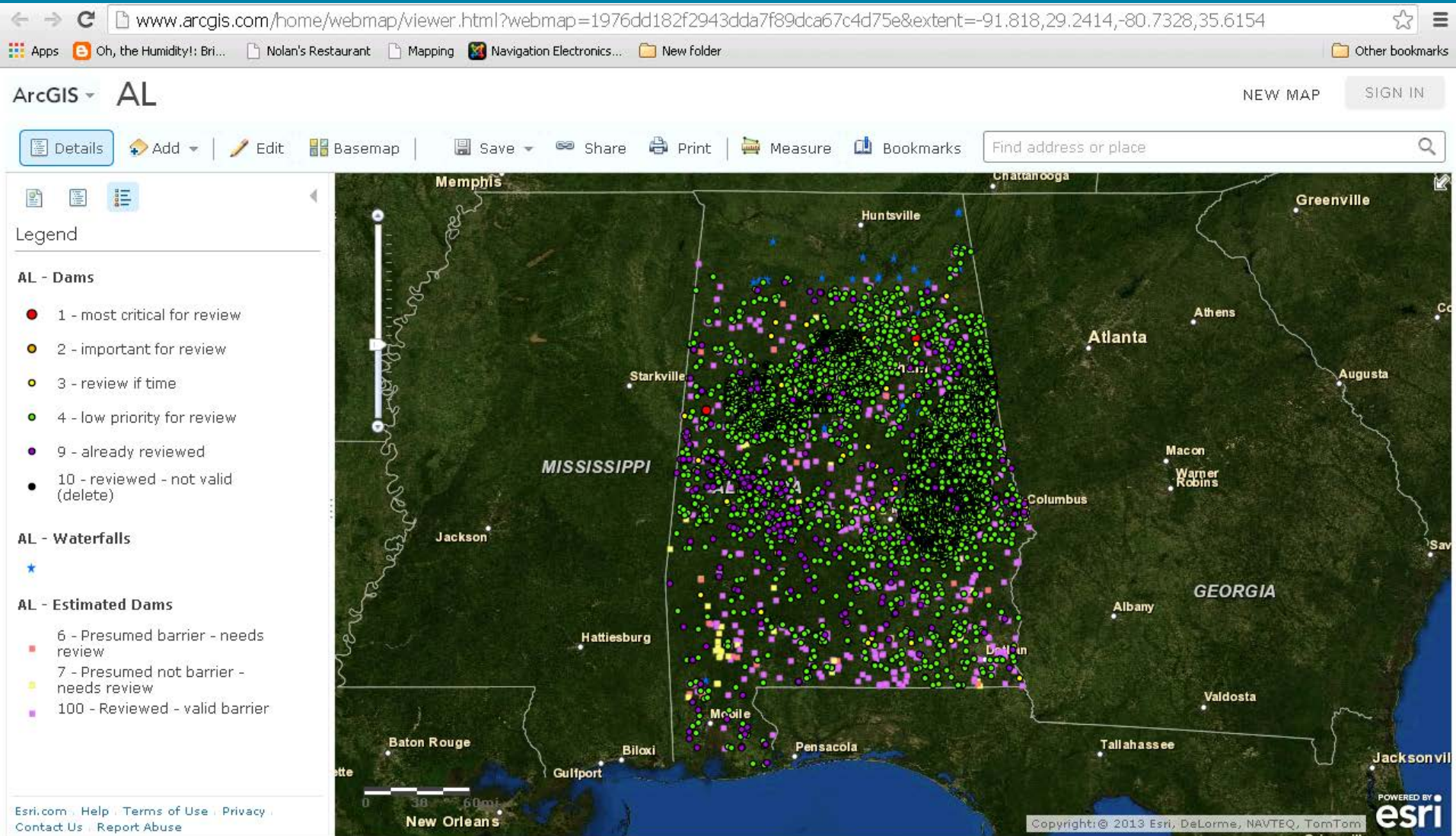
**Goal:** Conducting a thorough ecological assessment of dams and its impact across the South Atlantic LCC region, including some areas outside due to watershed boundaries.

## Applications:

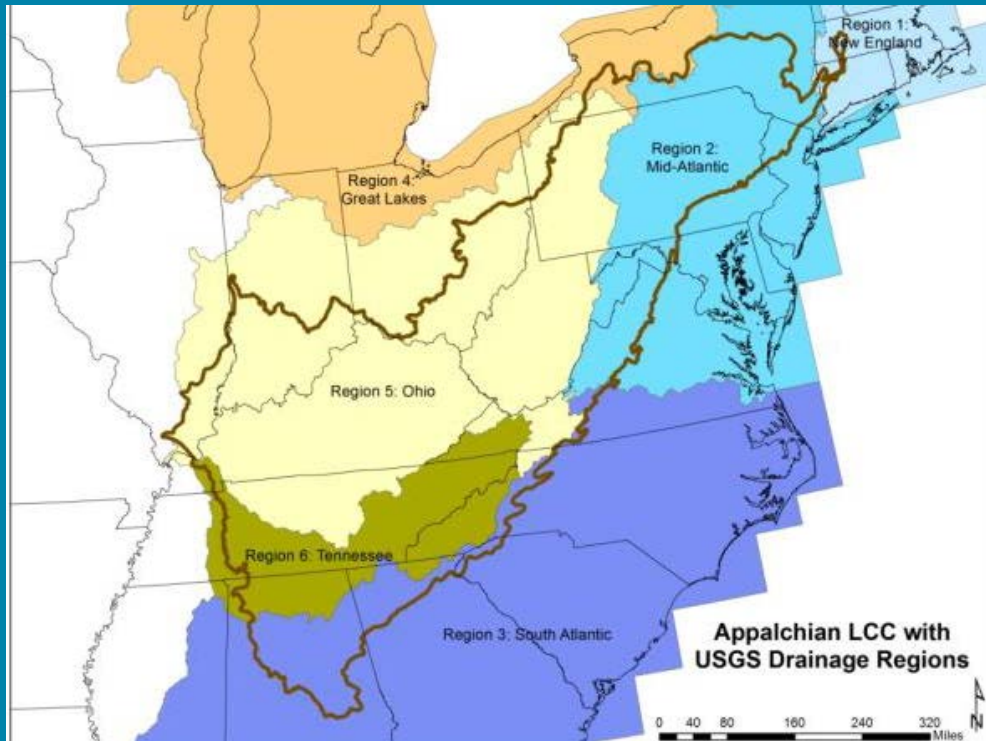
- Support planners/managers in fish passage efforts
- Prioritizing dams to be removed or bypassed based on their ecological benefit
- Develop watershed plans
- Aid in acquisition of project funds
- Provide a baseline for indicators and measures
- Help with project communications

- Study area = 250,000 + miles
- 350,000+ miles of mapped streams & rivers
- 10s of thousands dams & 100s of thousands of road crossings

# Southeast Aquatic Connectivity Assessment Project (SEACAP)



# APP LCC Stream Classification Project



**Goal:** A standardized aquatic habitat classification and dataset for the Appalachian Landscape Conservation Cooperative (APLCC)

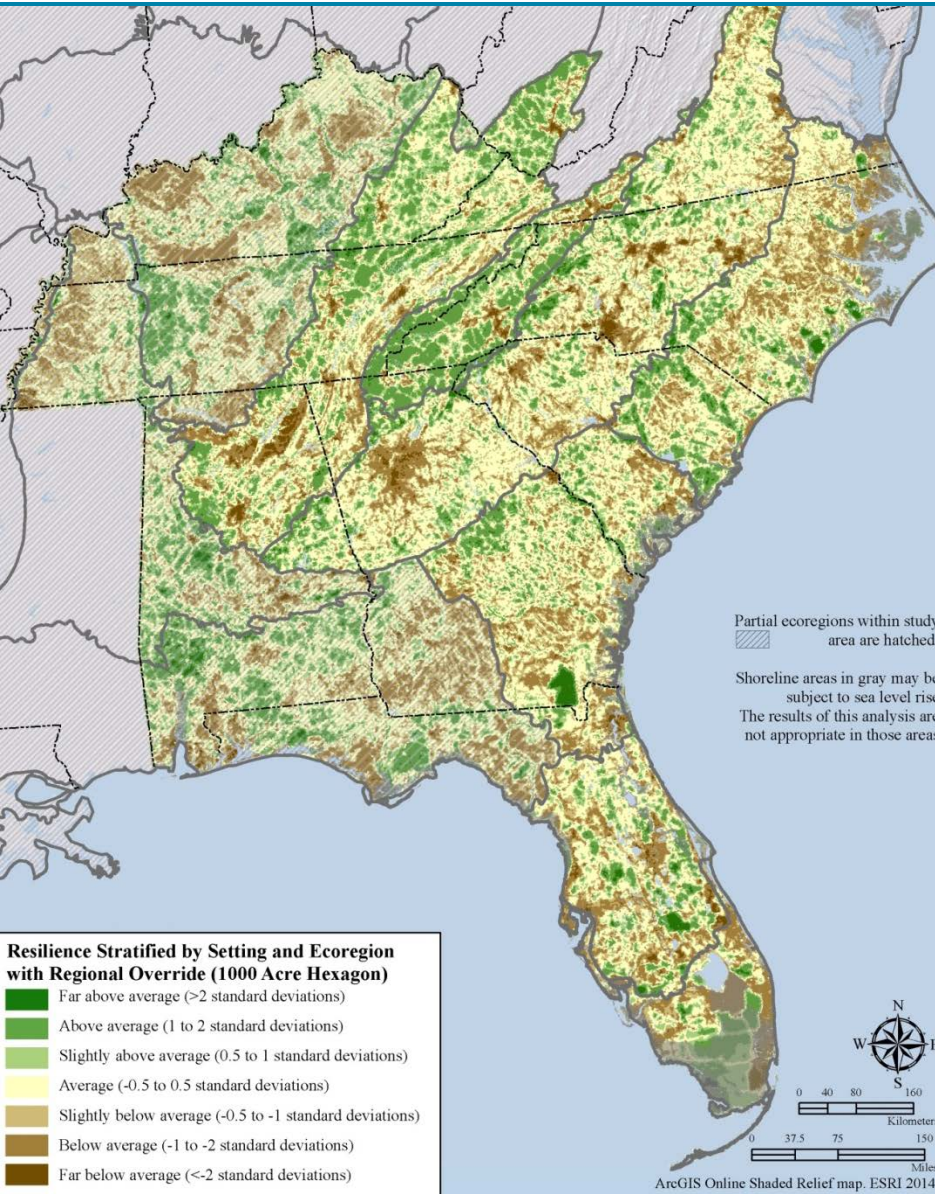
## Applications:

- Provide common definitions and mapping of aquatic habitats across state lines.
- Facilitate a new understanding of aquatic biota on a regional scale
- Create a new opportunity to assess condition and prioritize habitats
- Facilitate more effective and efficient habitat conservation

## Products:

- 1) A classification system and report describing the method used to develop the system.
- 2) a GIS stream data set based on the NHD+ medium resolution stream reaches attributed with the selected classification variables such as stream size, gradient, geology and pH, temperature, and hydrologic class

# Southeast Resilience Project (Terrestrial Lands Assessment)



## Goal:

- To assess terrestrial landscapes and ecosystems using a variety of metrics:
  - landform variety
  - geologic formations
  - wetland density
  - landscape complexity
  - local connectedness
  - protected lands
  - portfolio sites
- To determine its potential ability to be resilient to climate change and also to determine areas of high biodiversity.
- **Anticipated uses:** future conservation opportunities, land acquisitions, restoration efforts, cross-state/landscape efforts



