

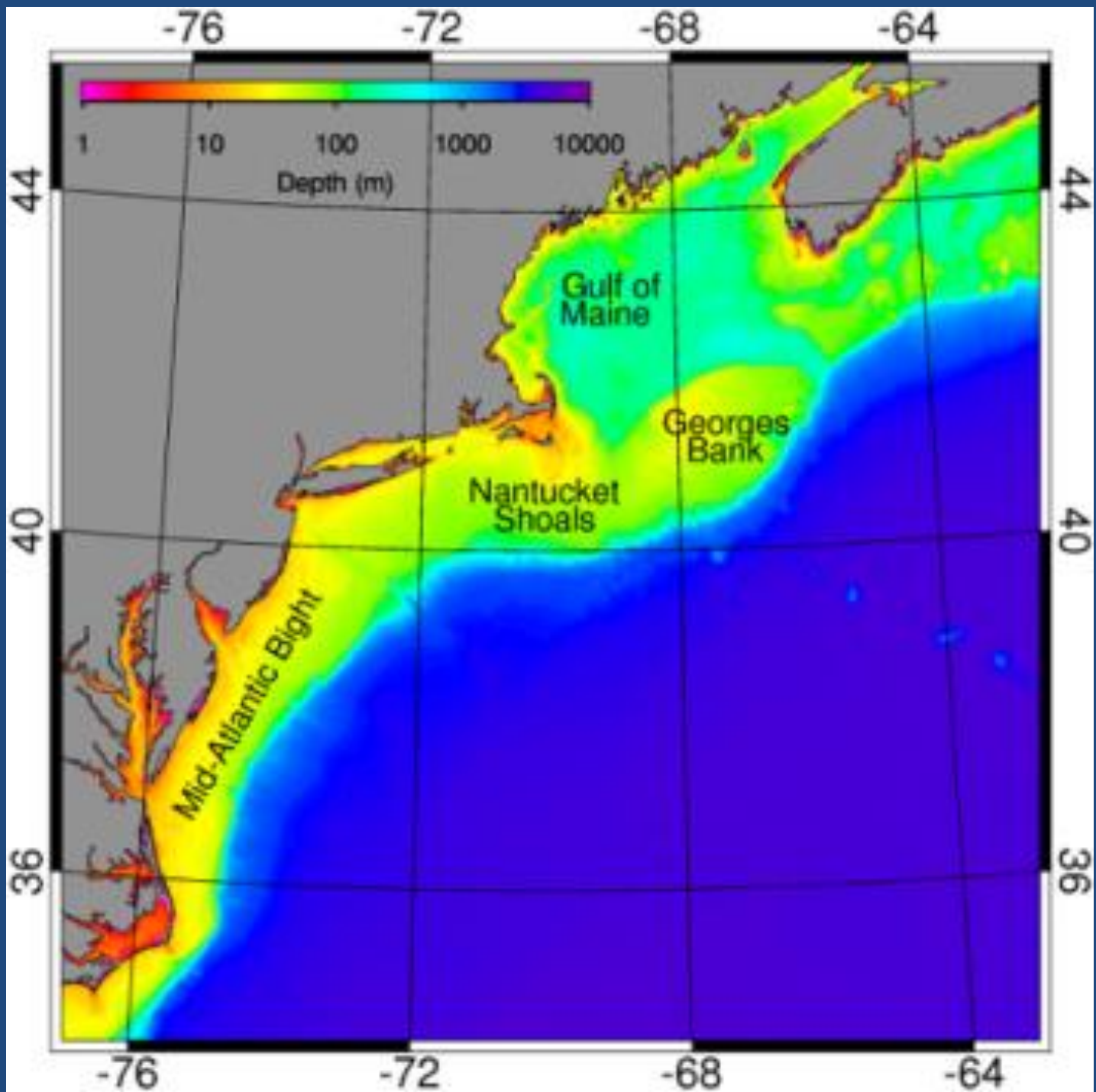


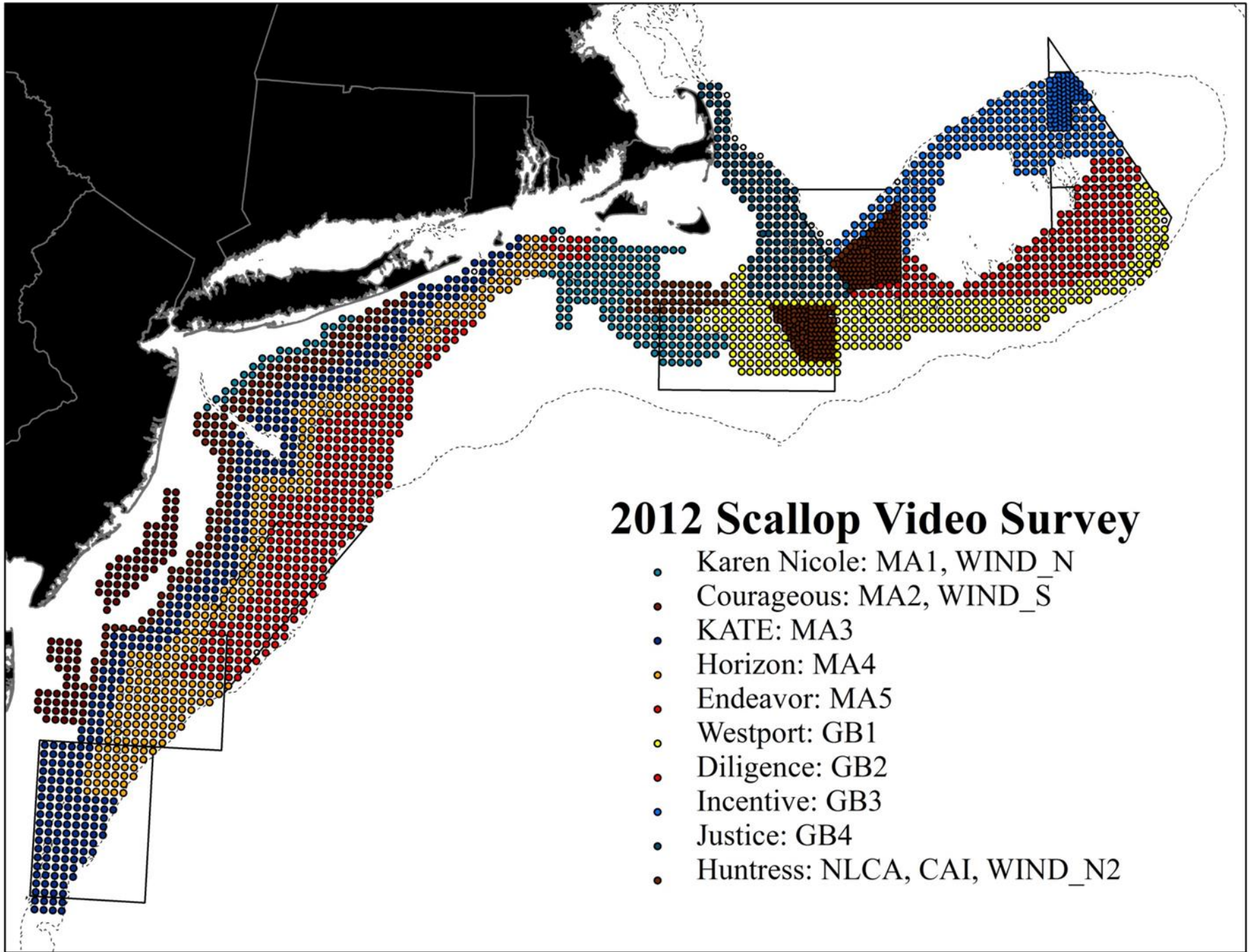
SAVE AN
ENDANGERED
SPECIES

NOAA

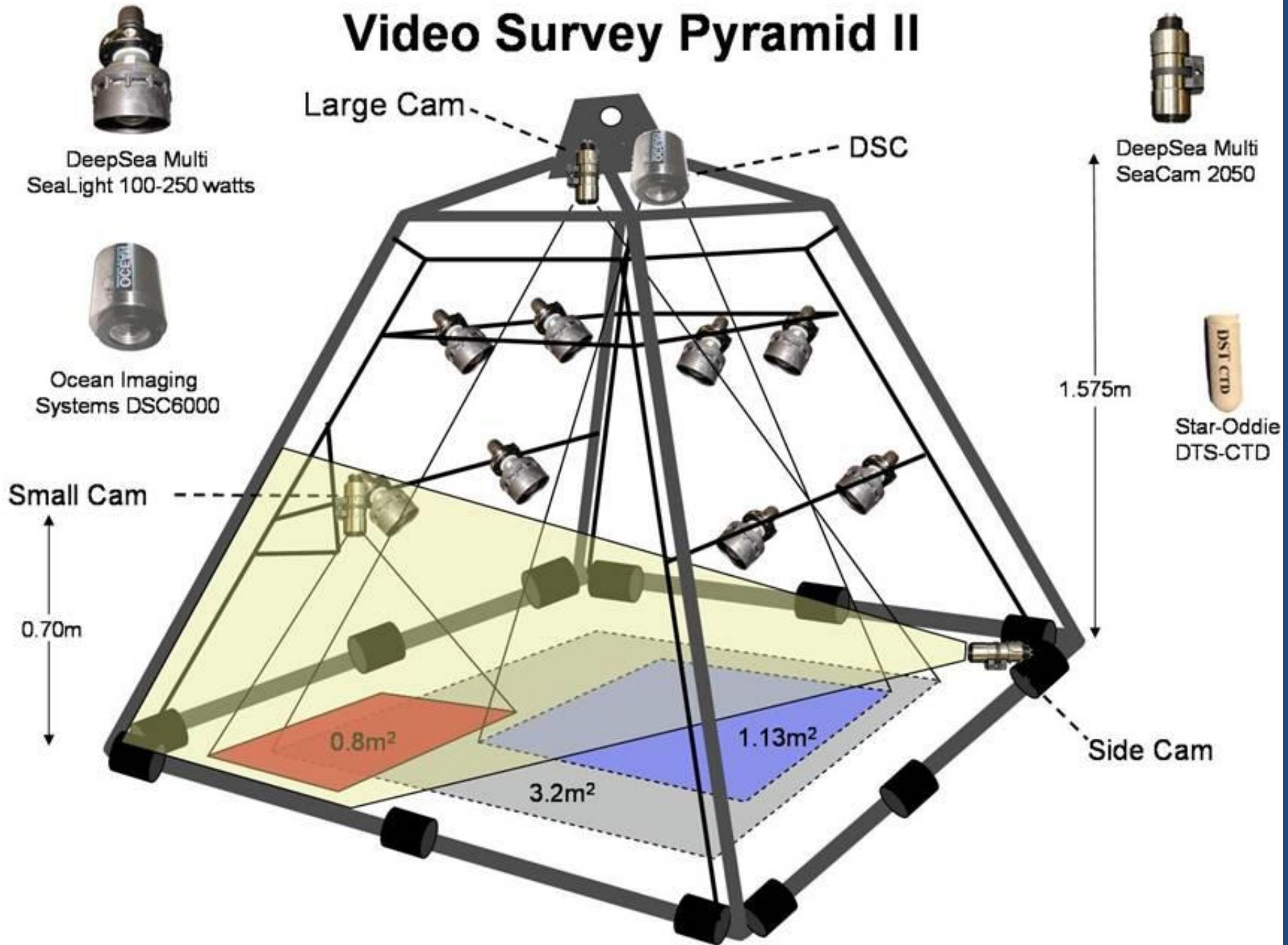
Jesus Was A
Fisherman. Why
Can't I Be?

Why Are You
Stopping Me
From
Fishing?





Video Survey Pyramid II



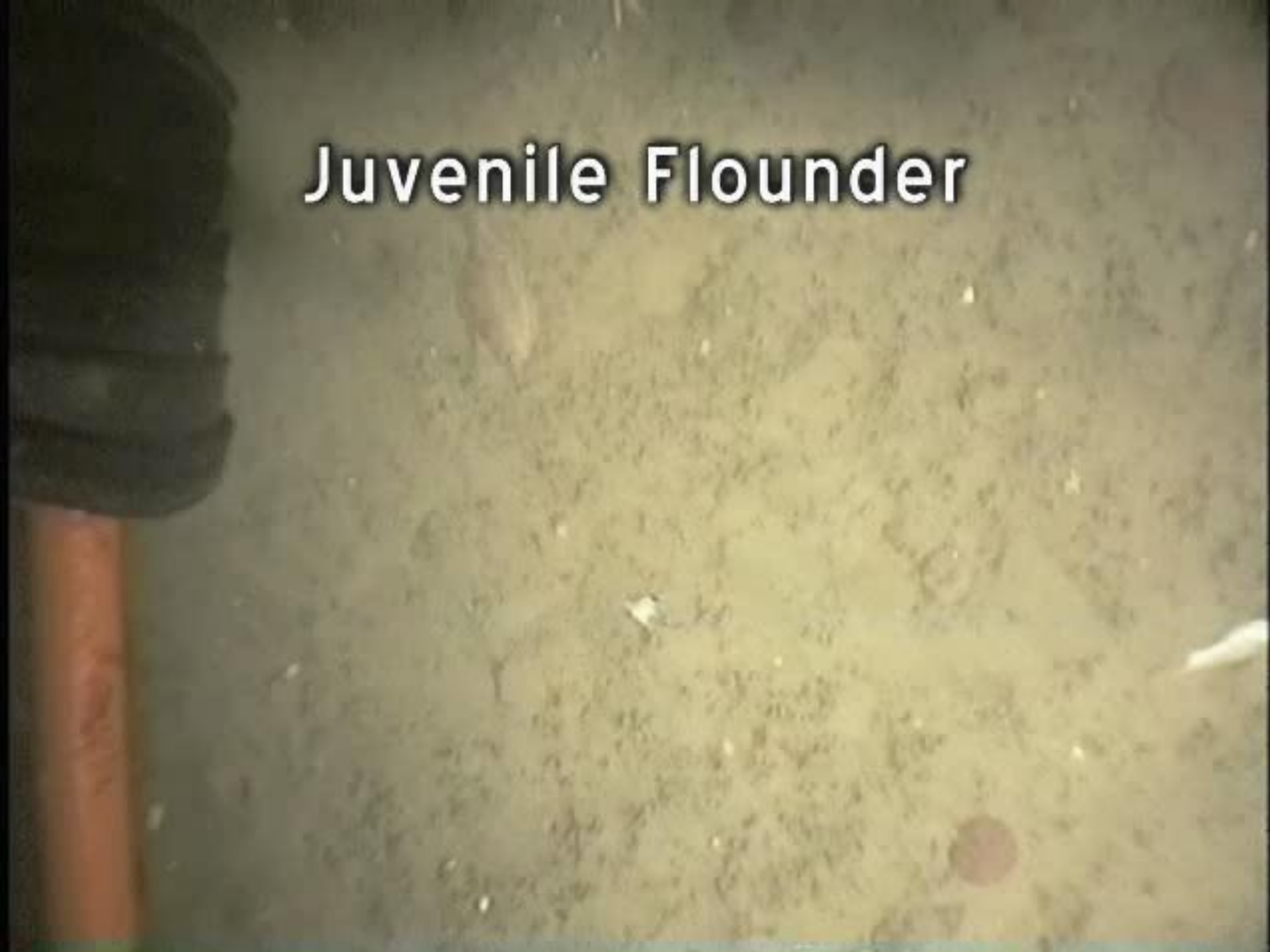




Goosefish
Lophius americanus



Juvenile Flounder



Commercial Fisheries News

Closed Areas I, II
access outage • 5

Late season bluefin
bite off NJ • 8

Lobster prices • 18
Howling winds, year-end holidays

Shrimp Moratorium • 24
No fishing in 2014

Herring/haddock • 20
Face-off at NE council meeting

Dogfish quota up,
but no market fix • 10

CFRF whelk, lobster,
scallop project results • 15

Bearin's • 42
Church is where you find it

JANUARY 2014 • Volume 41 Number 5 • A Compass Publication • \$2.75



om December

Project to mine data from scallop video surveys

In 1998, the sea scallop resource was recovering while the industry continued to struggle. At that time, the scallop industry asked the University of Massachusetts Dartmouth School for Marine Science and Technology (SMAST) for help in providing estimates of the surrounding scallop biomass on key scalloping grounds in the Northeast. So began the video surveys of Georges Bank and the Mid Atlantic.

Now, nearly 15 years later, we have completed more than 165 video survey cruises with the essential help of fishermen and other partners who donated their time, fuel, fuel, and fishing vessels, which served as research platforms for this project.

Federal support and considerable contributions from the industry-funded Scallop Research Set-Aside (RSA) program have provided for equipment, student stipends, and research scientists. Altogether, these resources have made it possible for us to conduct a wide-ranging, fine-scale survey of most of the ocean floor from the Hagar Line to the Chesapeake.

To date, more than 100 students and fishermen have worked together on this project, and the SMAST video survey data has supported scallop management decisions since 1999. It is the largest survey of its kind in the world and has been published in 26 peer-reviewed scientific papers and used by the National Marine Fisheries Service for sea scallop stock assessments.

It also provides one of the fundamental data sets for the New England Fishery Management Council's Essential Fish Habitat Overlay

GUEST COLUMN

by Sally McGee and
Kevin Stokesbury

Amendment, which, when completed next year, will affect all of the managed species in the Northeast.

However, a tremendous amount of important data in these images remains to be analyzed — data that can help the surveys become an even more powerful tool to advance knowledge of the survey area.

Expanded analysis

To help capture as much value as possible from the video surveys, SMAST and The Nature Conservancy are developing an expanded analysis of the many different species and habitats observed.

For the next two years, the "Offshore Video Survey Analysis" will incorporate an oceanographic modeling program called "Pistis Volume Coastal Ocean Model" (PVCOM) and will organize and unify existing published fieldwork and models.

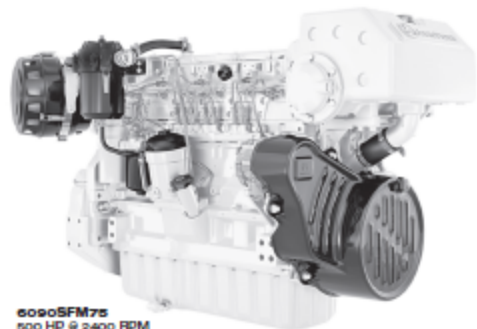
Earlier this year, the scallop ISA

A tremendous amount of important data in these video survey images remains to be analyzed.

program was used to focus more research on critically important environmental and product-quality issues.

Although the joint SMAST/See SCALLOP SURVEYS, page 14

THE 6090SFM75 JOHN DEERE 500 HP @ 2400 RPM



6090SFM75
500 HP @ 2400 RPM
9.0 L/5.45 CU IN
2350 LBS

A boatload of power in a compact package

Check the specs: The 6090SFM75 John Deere delivers 500 HP at 2400 RPM — that's honest workboat power. Plus, the 6090SFM75's compact size makes it an excellent choice for both new boat and repower applications.

Like all John Deere marine diesels, the 6090SFM75 is designed for quiet, smooth operation and excellent fuel economy. And with high torque at low RPM, you'll have all the throttle response

you need for excellent vessel control and maneuvering, even with a load of gear aboard. Combine all this with Deere's reputation for long-term reliability supported by our proven dealer network and we think you'll agree: the 6090SFM75 John Deere is hard to beat.



JOHN DEERE

ALSO INSIDE

Along the Coast.....	4
Bearin's.....	42
Classifieds.....	34
Coming Events.....	41
Editorial.....	6
FISH SAFE.....	40
Guest Columns.....	7, 13
Letters.....	6
Lobster Market Report... ..	18
NE Groundfish History... ..	30
News Catch.....	32
Shop Talk.....	38

ART'S MARINE SERVICES, INC.
NORTH SHORE CO., BOX 730
CIVIL Z HEAD, NH 04814
(603) 994-7044

DONWADY DIESEL & MARINE
BOX 404, CLARK POINT TOW
SOUTHWEST HARBOR, ME 04879
(207) 244-6100

JEFFREY DIESEL, LLC
487 MAIN ST.
DORCHESTER, NJ 08035
(609) 726-8910

KITTERY POINT YACHT YARD
807 MAIN ST.
ELIZABETH, ME 05209
(207) 439-5887

JEFFREY DIESEL SERVICES
700 PLEASANT HILL RD.
BRANDISVILLE, ME 04879
(207) 726-6914

P.A. WHEELER CO., INC.
140 PINEBUSH BLVD.
NEW BEDFORD, MA 01944
(508) 894-6665

SHOES & LAND
SENSING CO., INC.
76 STATE STREET
NAHANT, MA 01945
(978) 754-4551

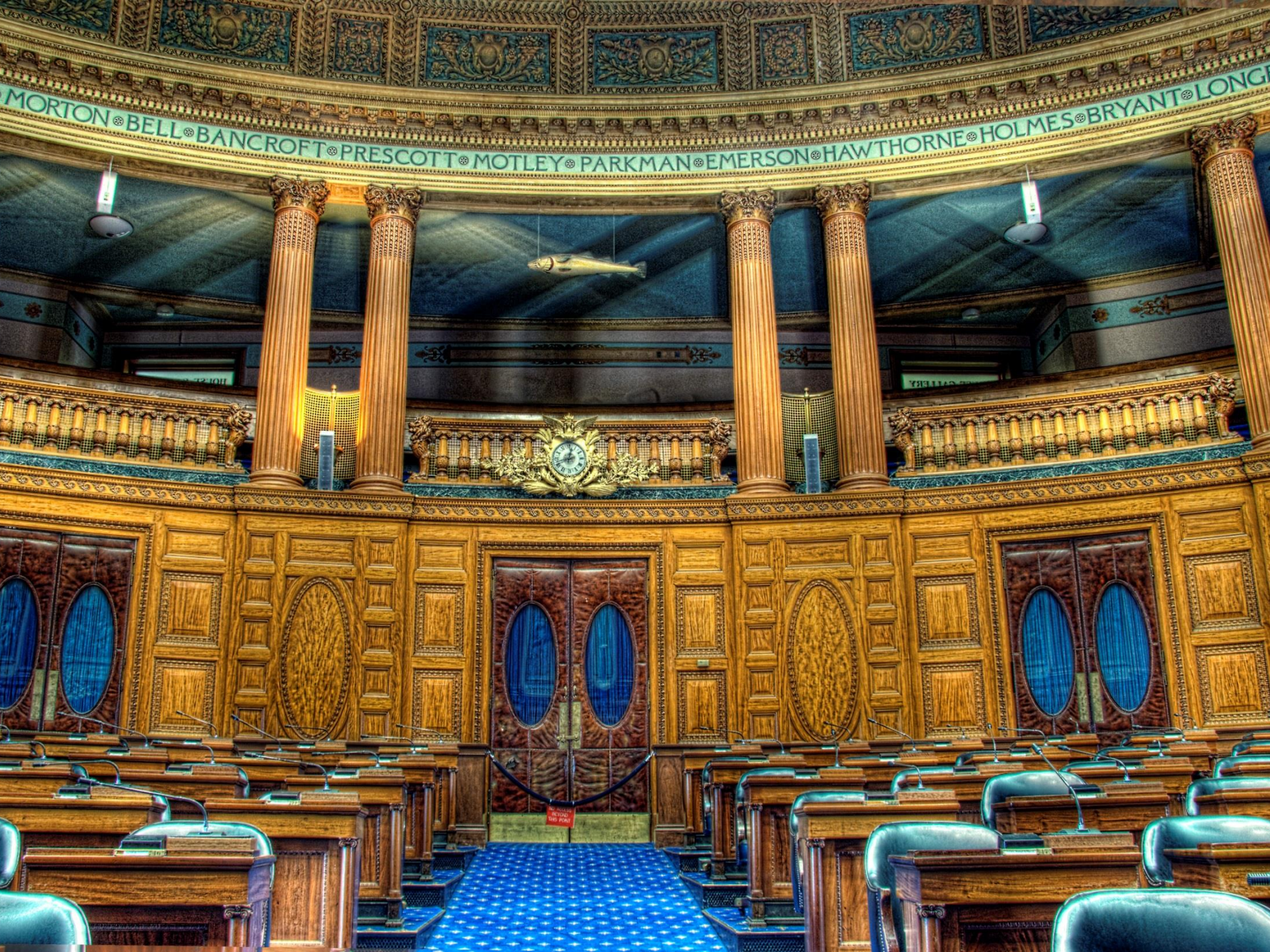
SAG HARBOR YACHT YARD
PO BOX 1194, BAY STREET
SAG HARBOR, NY 11963
(631) 726-8284

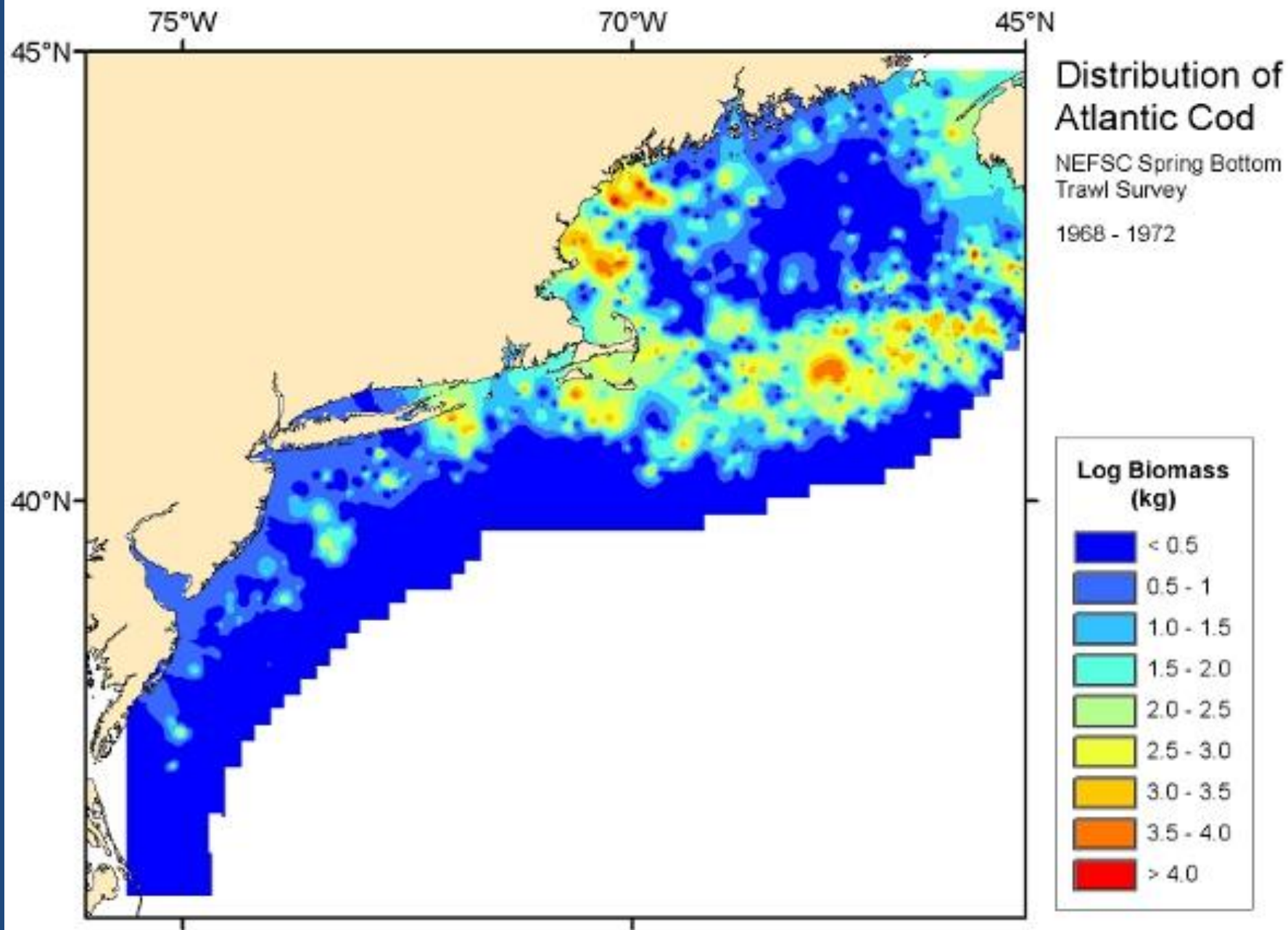
STEVEN'S SHOP
160 TOWNSEND ST.
CHINA BROTHERS, MA 02128
(978) 244-5295

TOPPING DIESEL
& MARINE SERVICES
616 INDUSTRIAL
COLUMBIA FALLS, ME 04823
(207) 484-2882

WELLFLEET MARINE CORP.
PO BOX 1447, 15 HIGDONSON AVE.
WELLFLEET, MA 02647
(508) 344-4417

WELL POWER SYSTEMS, LLC
34 PLAINS ROAD, 2ND BOX 891
BRIDGE, CT 06260-0890
Phone: (860) 767-7610
DURHAM, CT 06828
FAX: (860) 767-7630





75°W

70°W

45°N

45°N

40°N

Distribution of Atlantic Cod

NEFSC Spring Bottom Trawl Survey

2003 - 2007

Log Biomass (kg)

