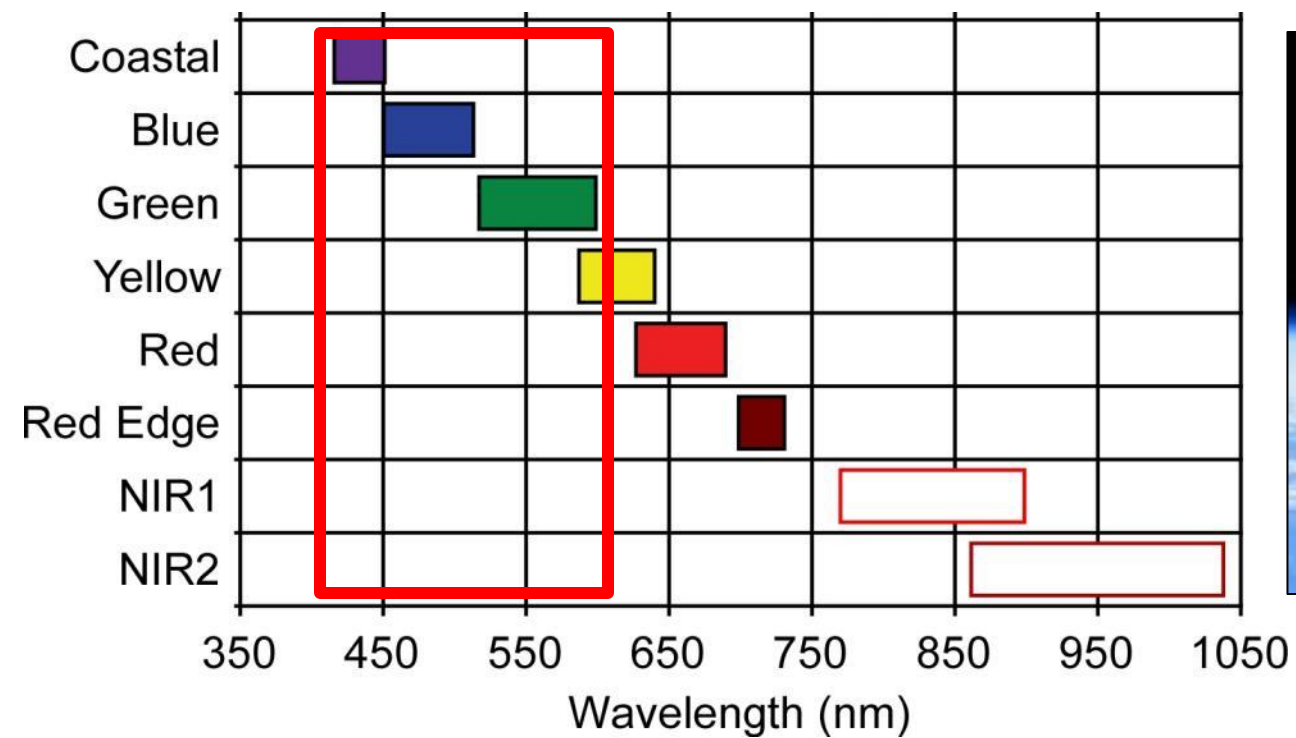
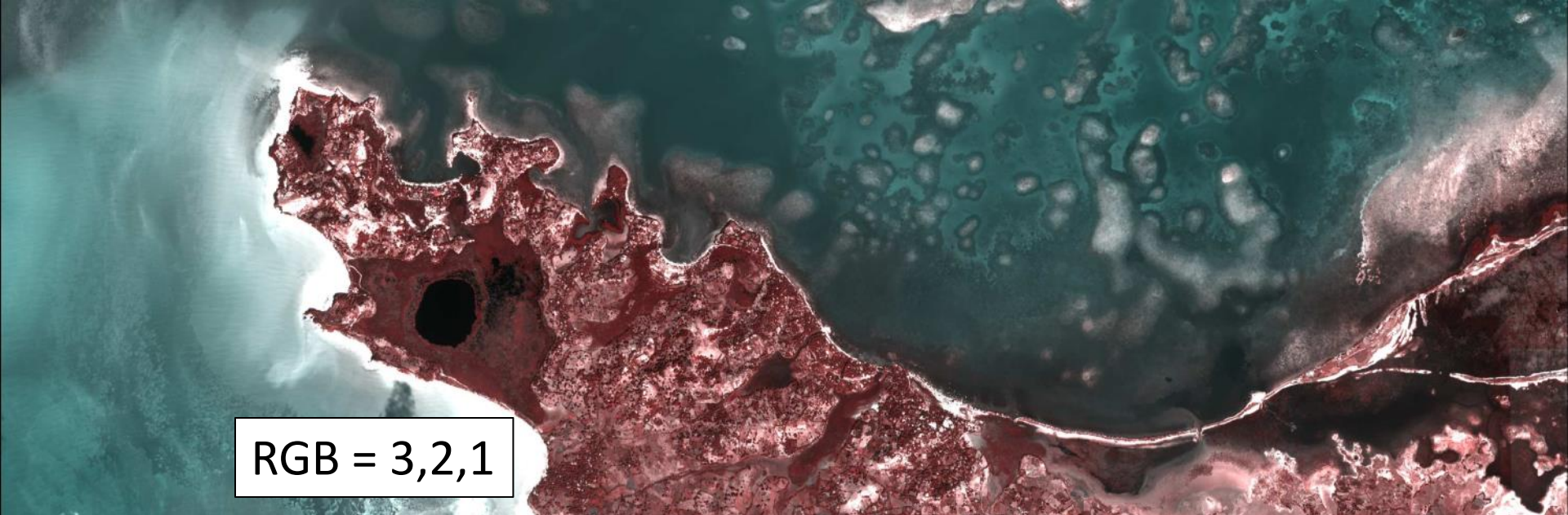
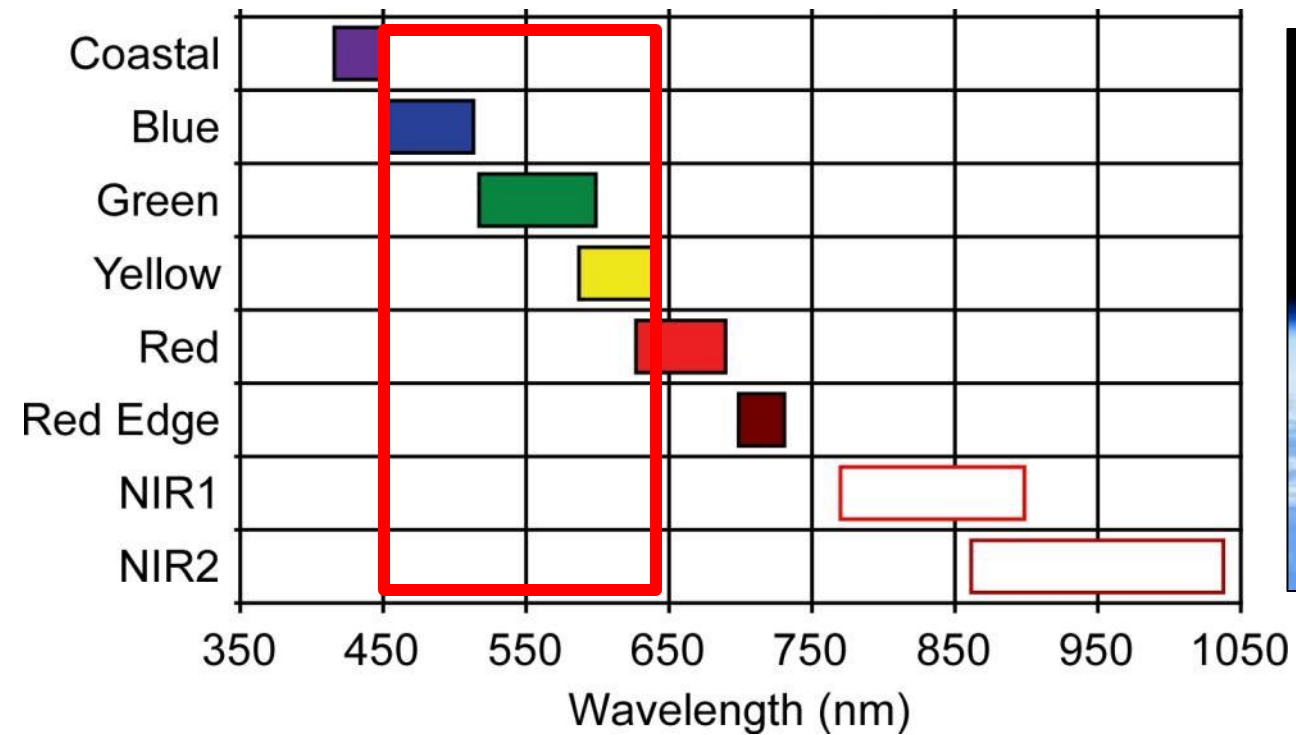
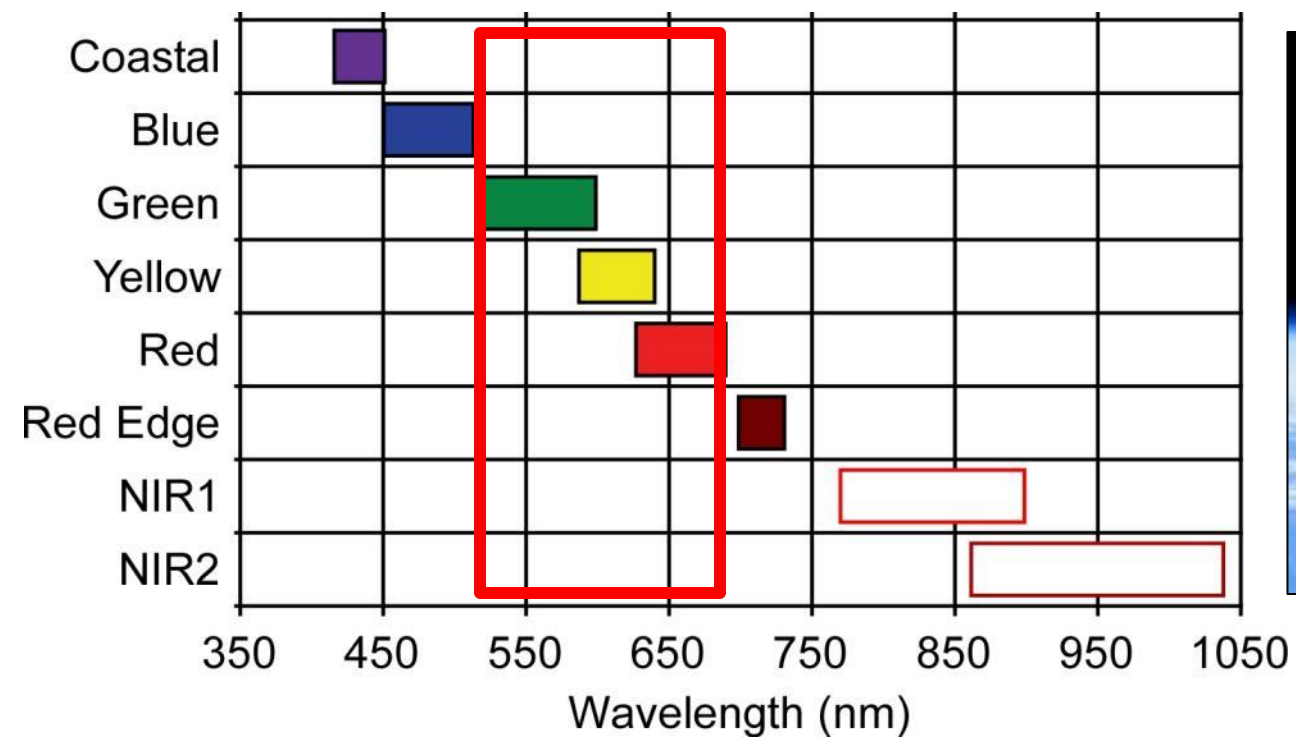
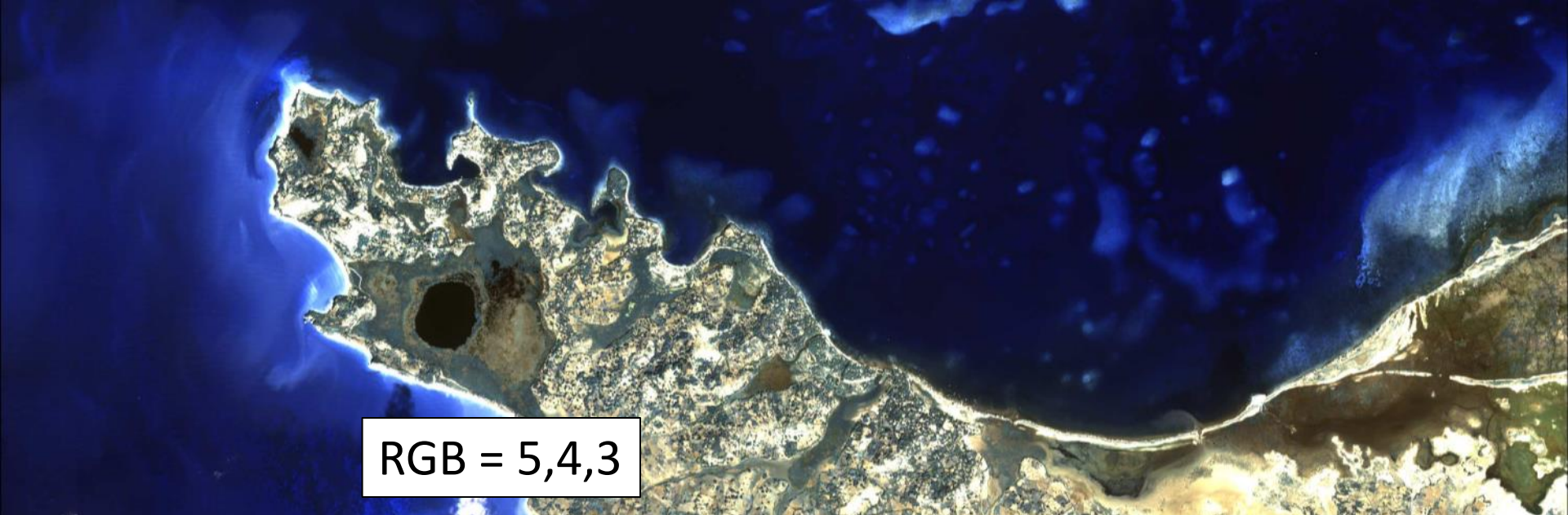


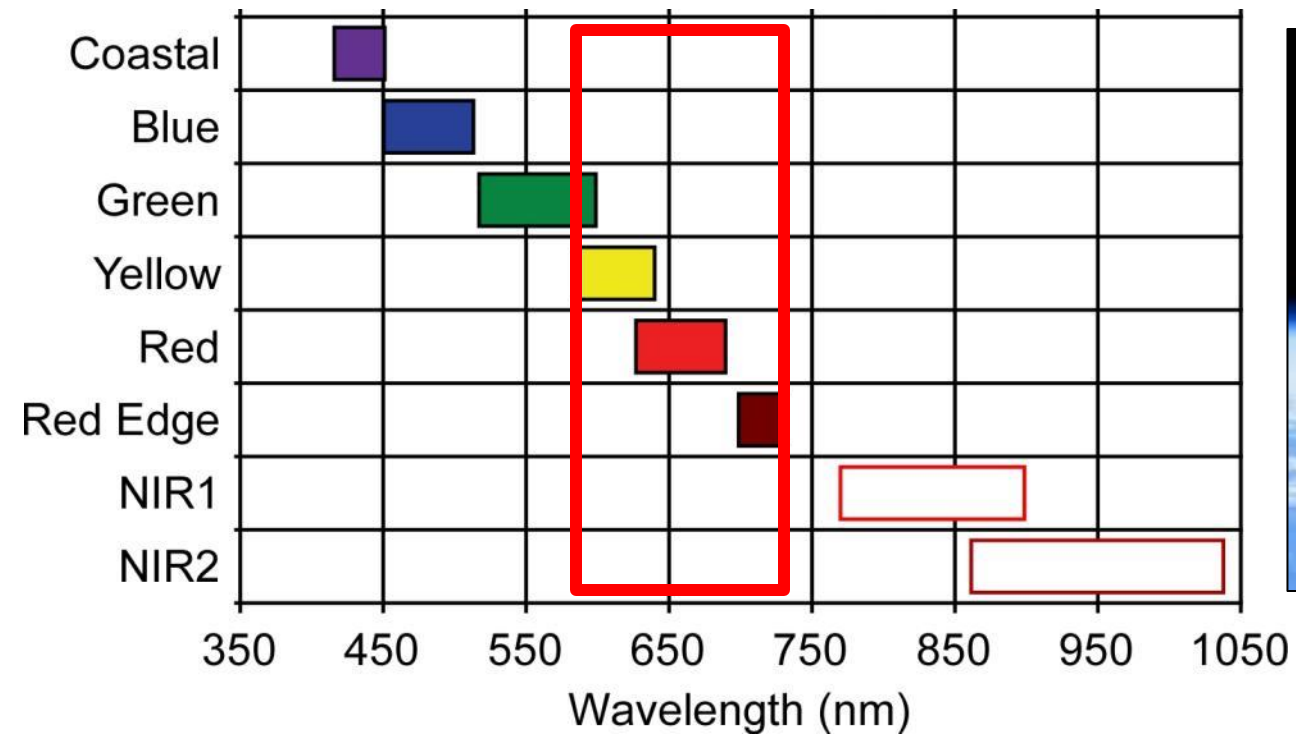
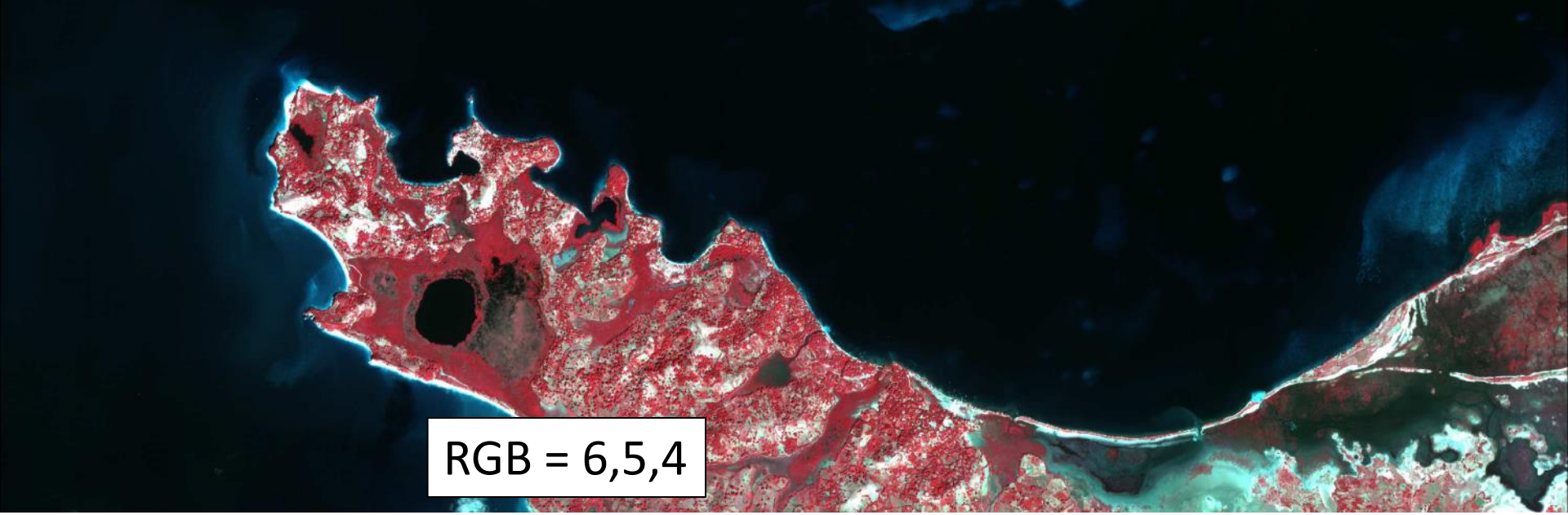
Ecosystem Services as a key to habitat conservation

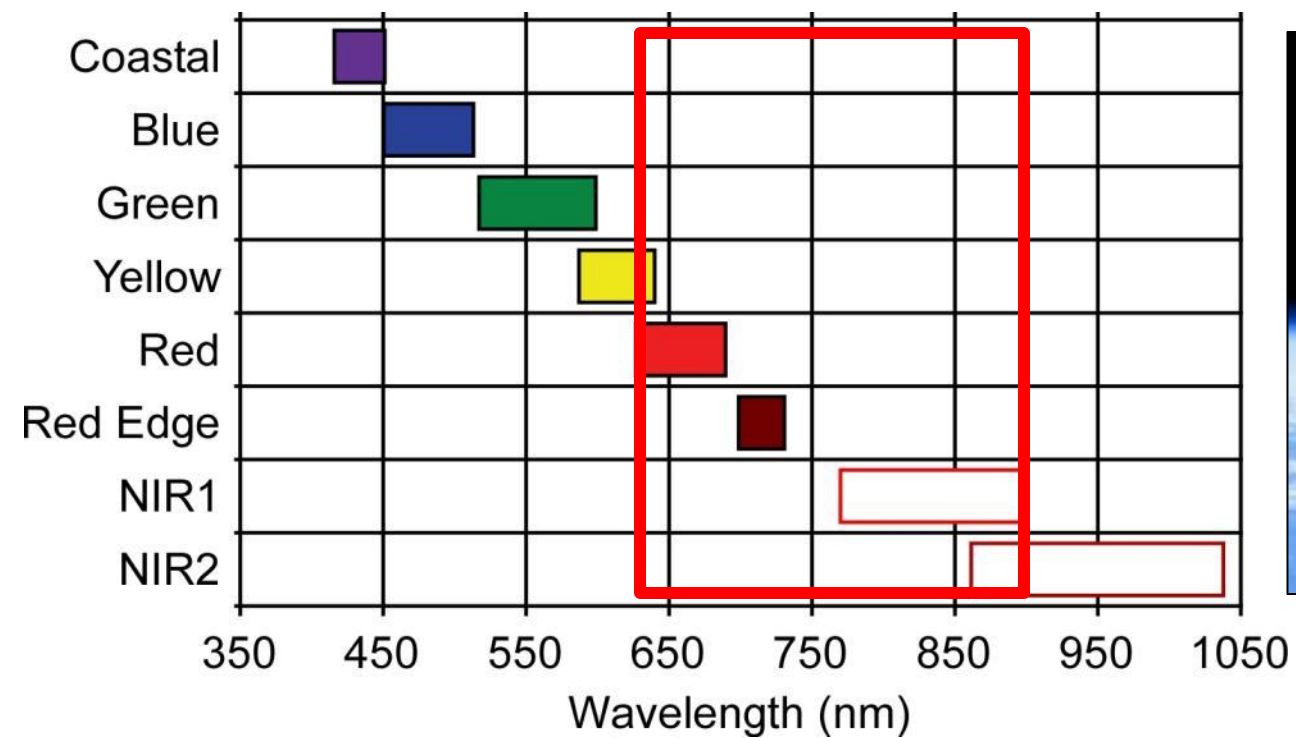
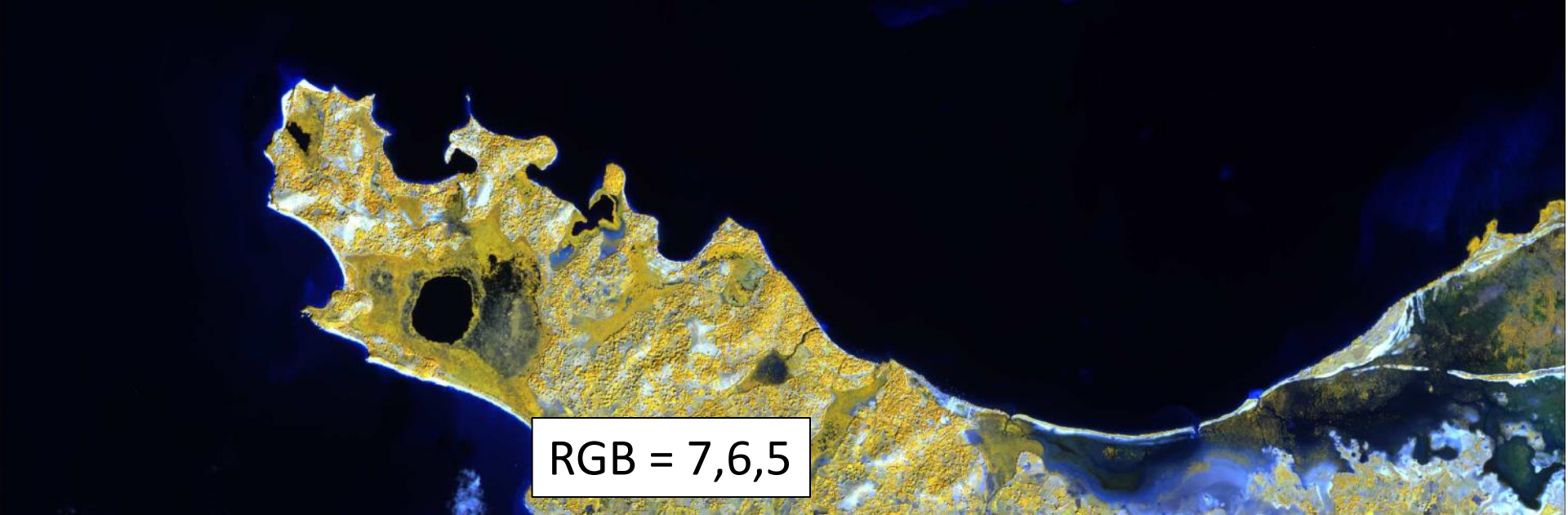
- Leverage technology
- Power of a good map
- Scale up
- Regional integration of data

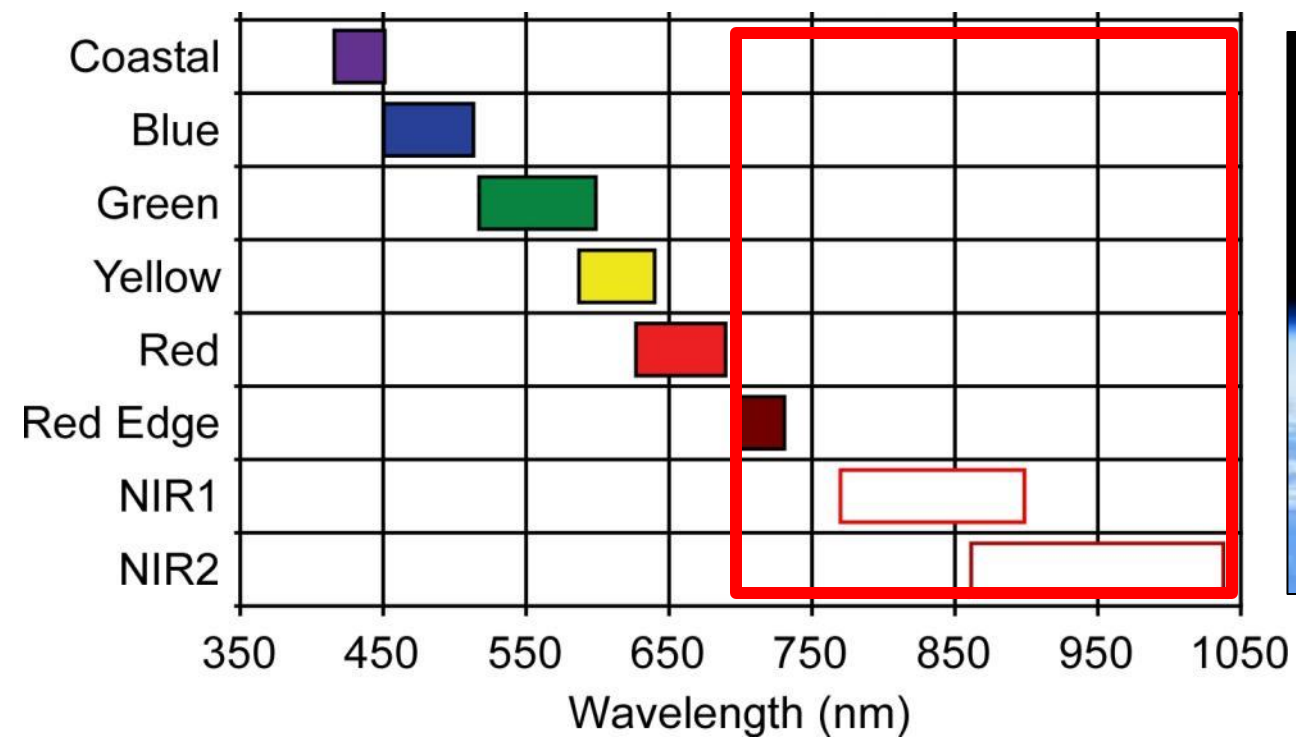
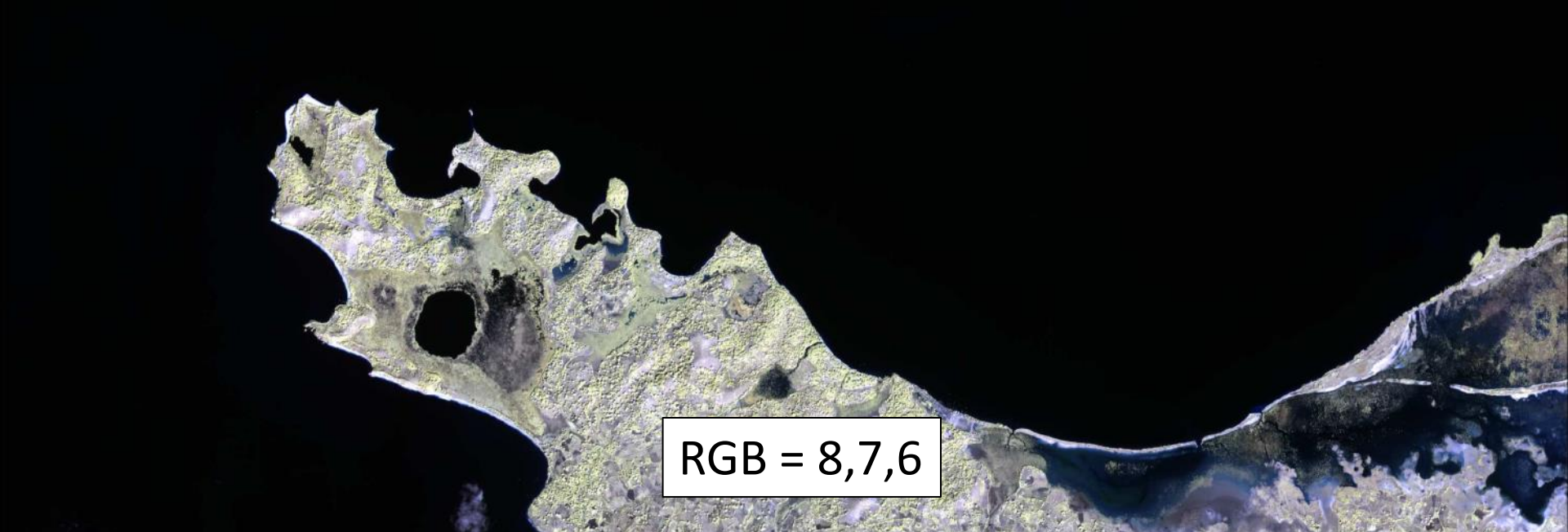


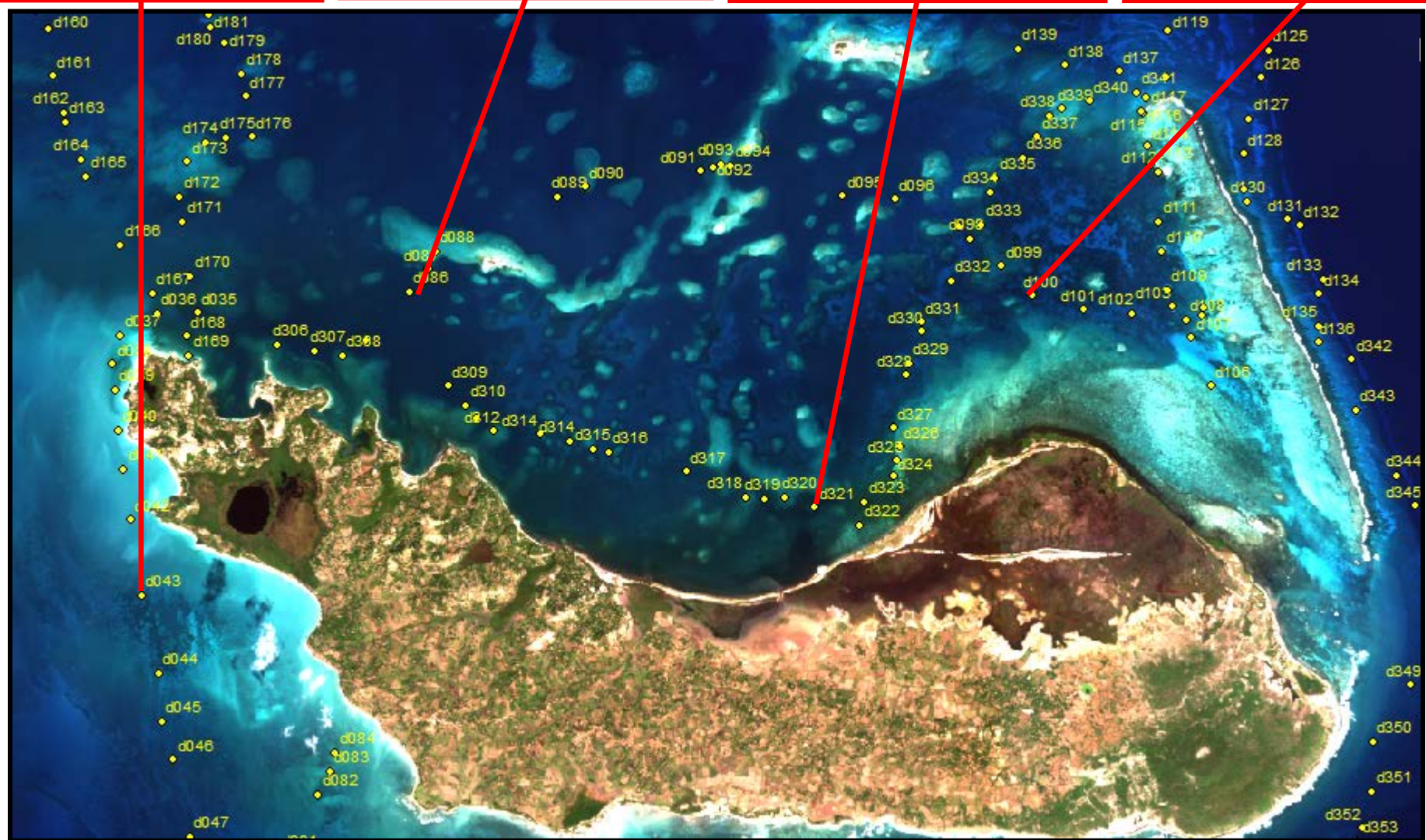




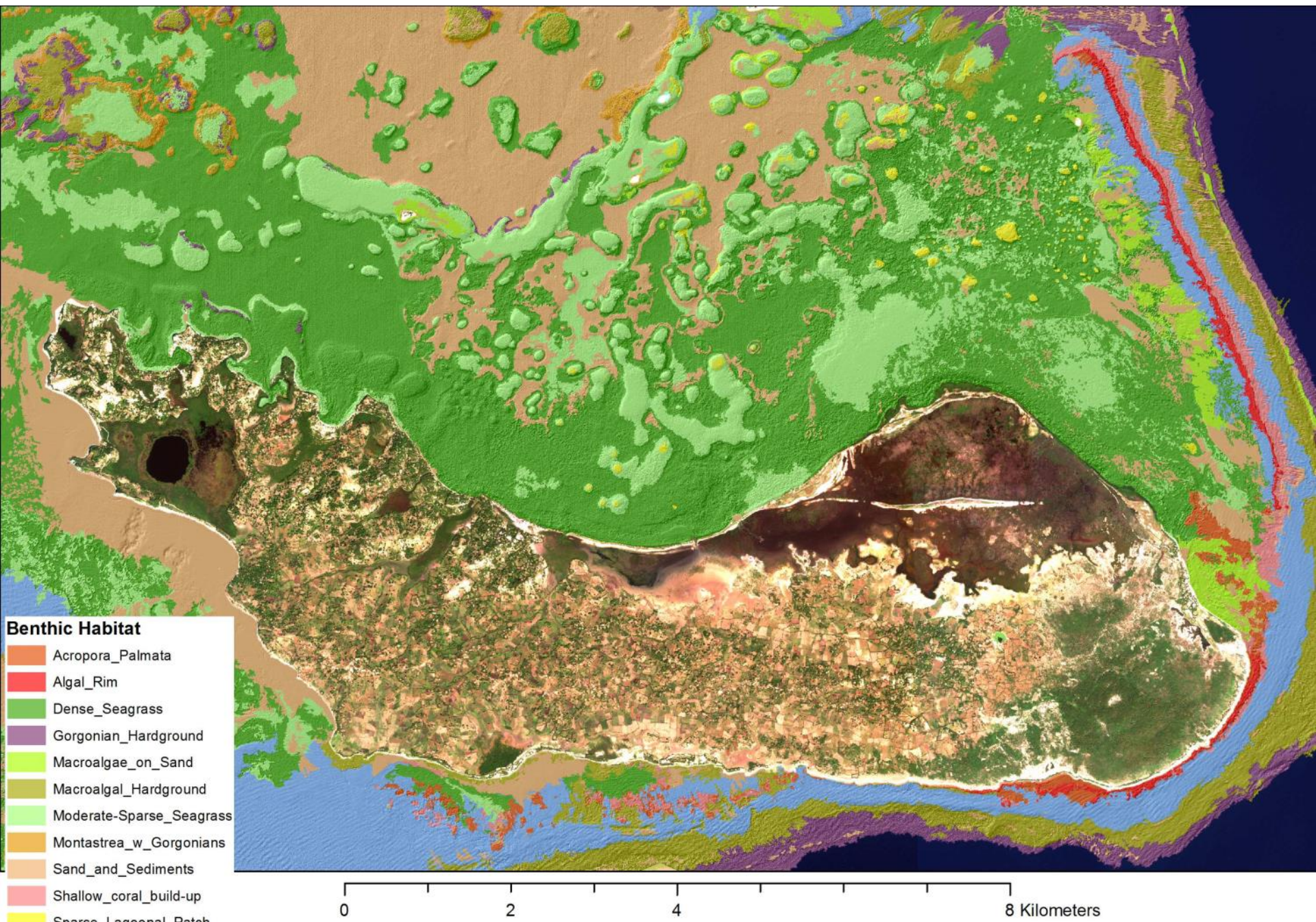




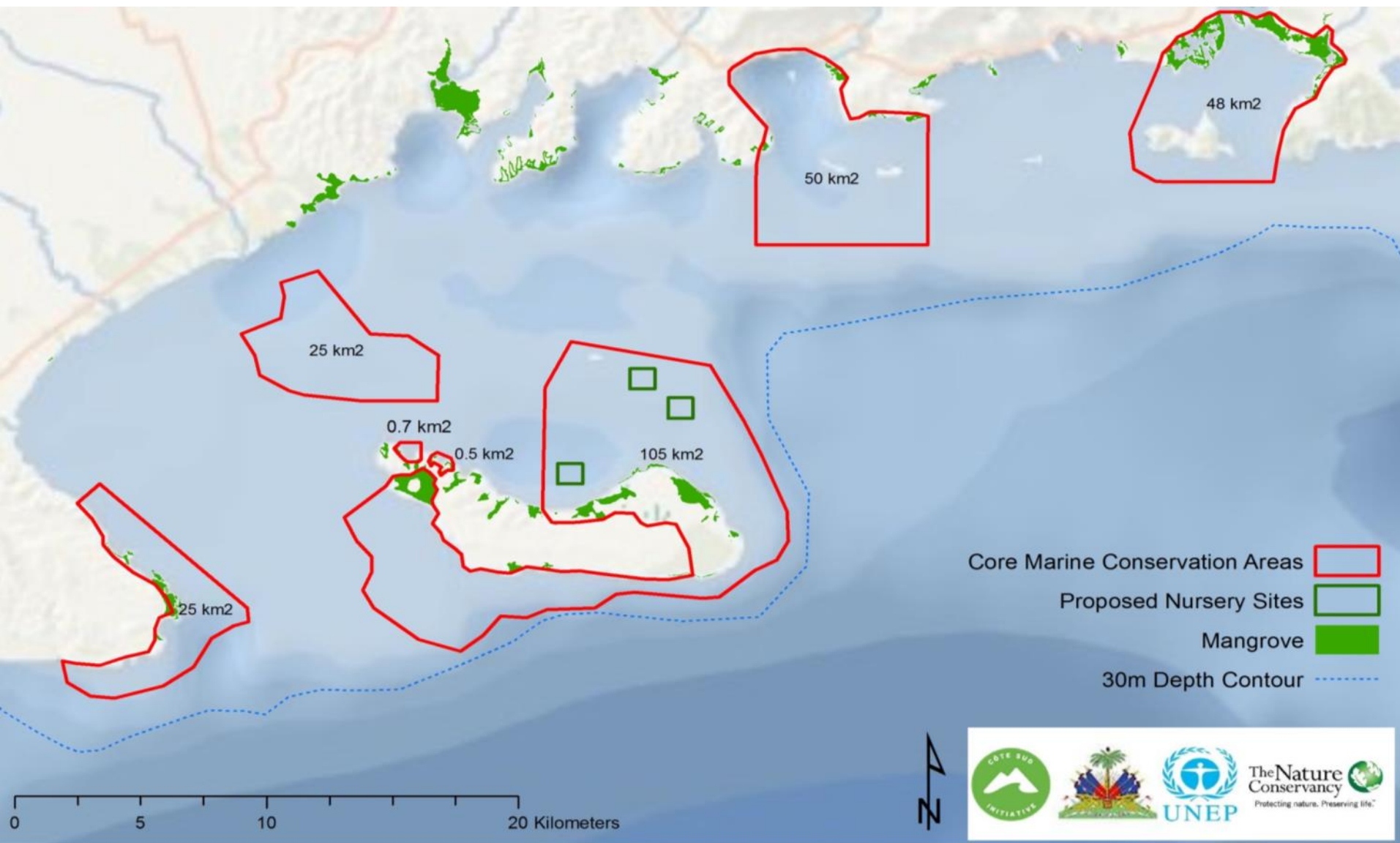




Development of bathymetry and benthic habitat products

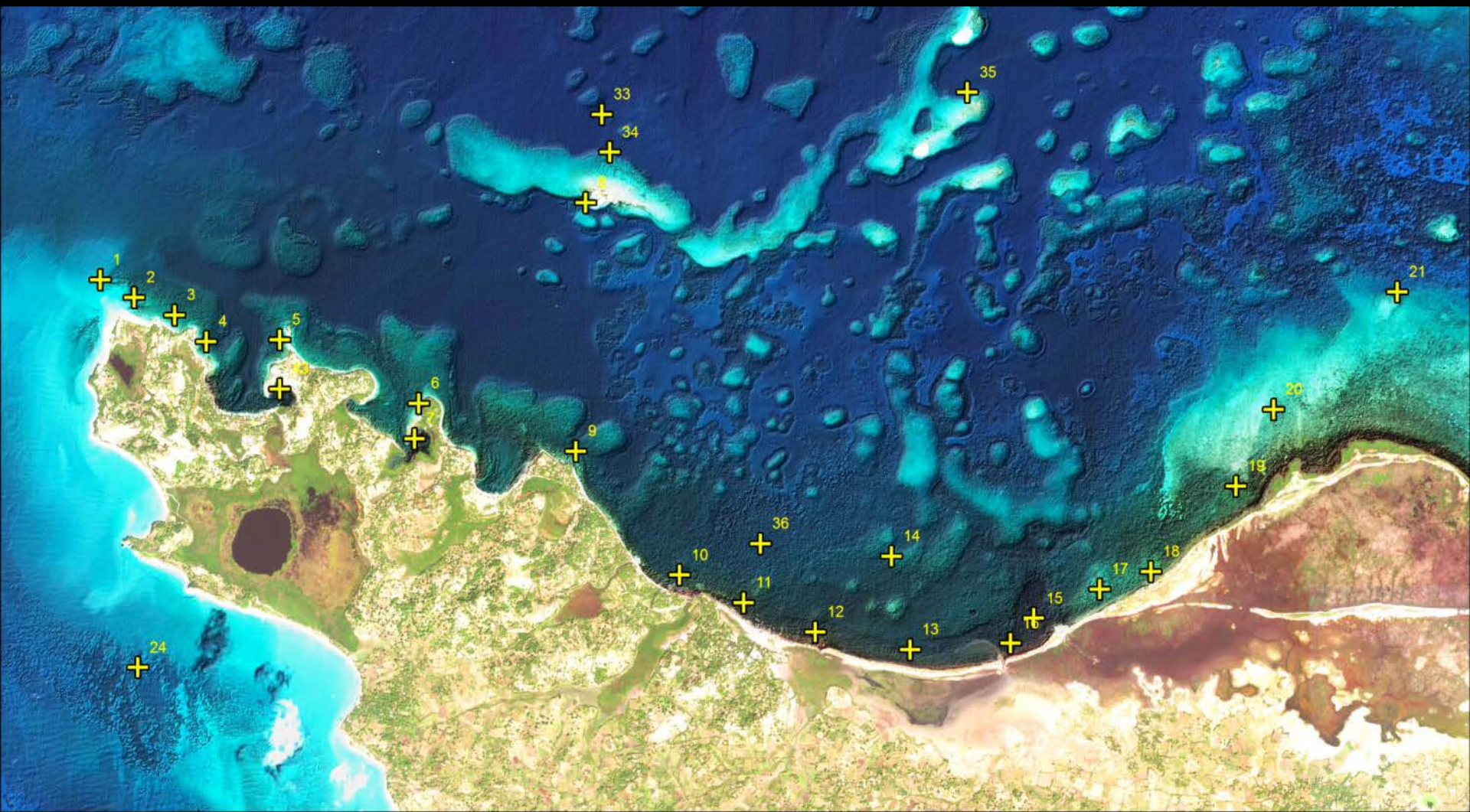


August 7, 2013 – Haiti declares first MPA Network



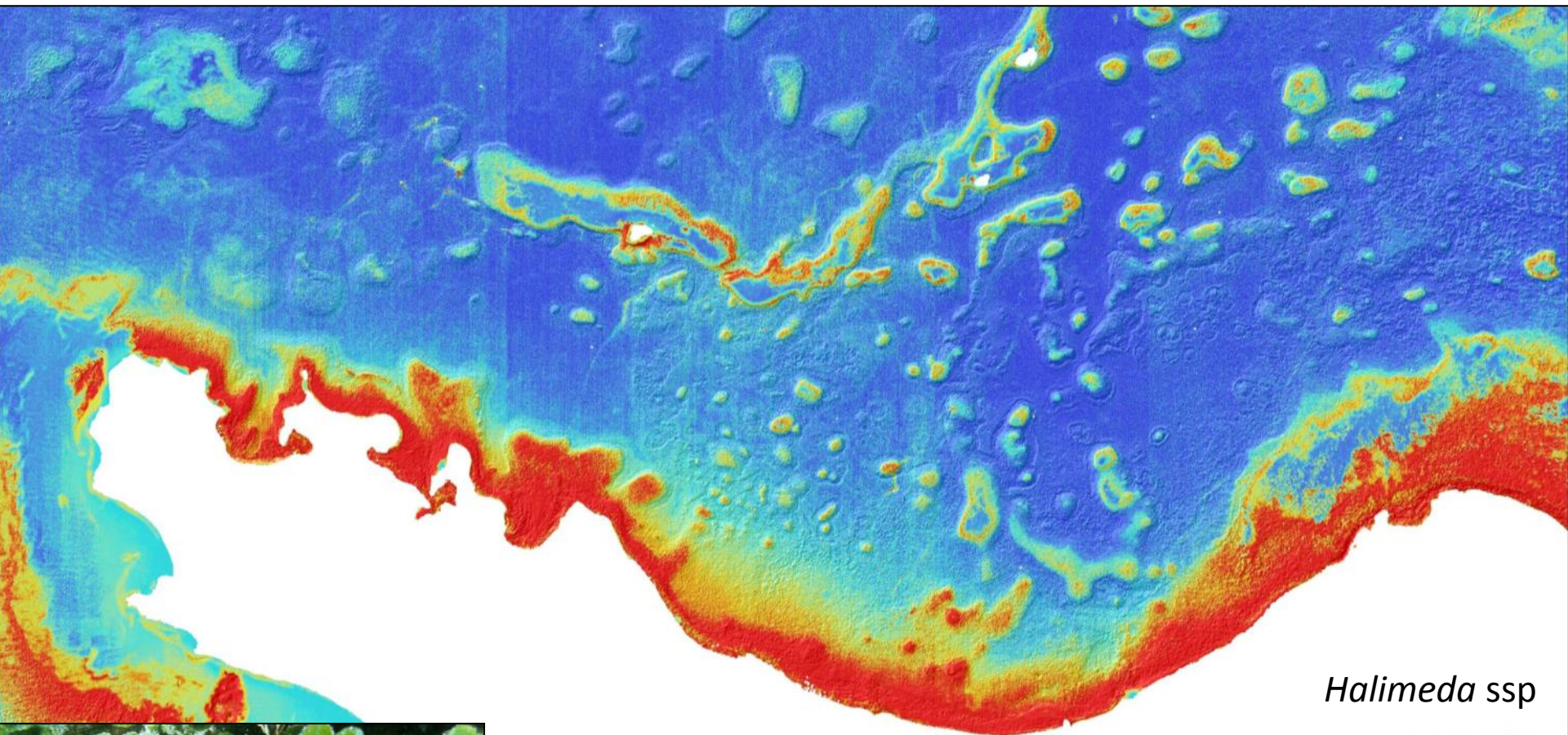
Aire Protégée de Ressources Naturelles Gérées de Port Salut/Aqui

Seagrass species prediction using WorldView-2



Field Points 

Seagrass species prediction using WorldView-2

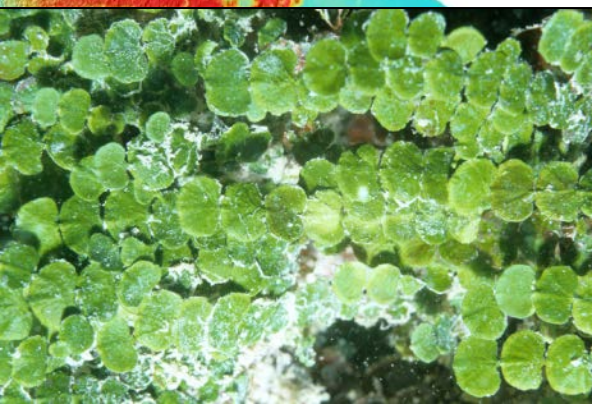


Halimeda ssp

Probability

High : 1

Low : 0.012



Halimeda ssp

Ma

Distribution of Mangrove Habitats of Grenada and the Grenadines

Gregg E. Moore[†], Ben F. Gilmer^{‡§}, and Steven R. Schill[‡]


[†]University of New Hampshire
Jackson Estuarine Laboratory
Durham, NH 03885, U.S.A.
gregg.moore@unh.edu

[‡]The Nature Conservancy
Eastern Caribbean Program
Christiansted, St. Croix 00820
U.S. Virgin Islands

[§]Downstream Strategies
Morgantown, WV 26505, U.S.A.



www.cerf-jcr.org

 Mangrove Areas 2012



www.JCRonline.org

ABSTRACT

Moore, G.E.; Gilmer, B.F., and Schill, S.R., 0000. Distribution of mangrove habitats of Grenada and the Grenadines. *Journal of Coastal Research*, 00(0), 000-000. Coconut Creek (Florida), ISSN 0749-0208.


Mangroves of Grenada and the Grenadines represent significant habitat within the regional context of the Eastern Caribbean. Losses of mangroves through storms, development, and climate change have negative impacts on critical ecosystem services. Estimates of mangrove area exist in the literature but do not fully reflect current conditions, effects of disturbance, and results of recovery; they also do not differentiate these areas by community types. Advances in imagery and remote sensing approaches allow higher-resolution resource mapping. We used remote sensing, image

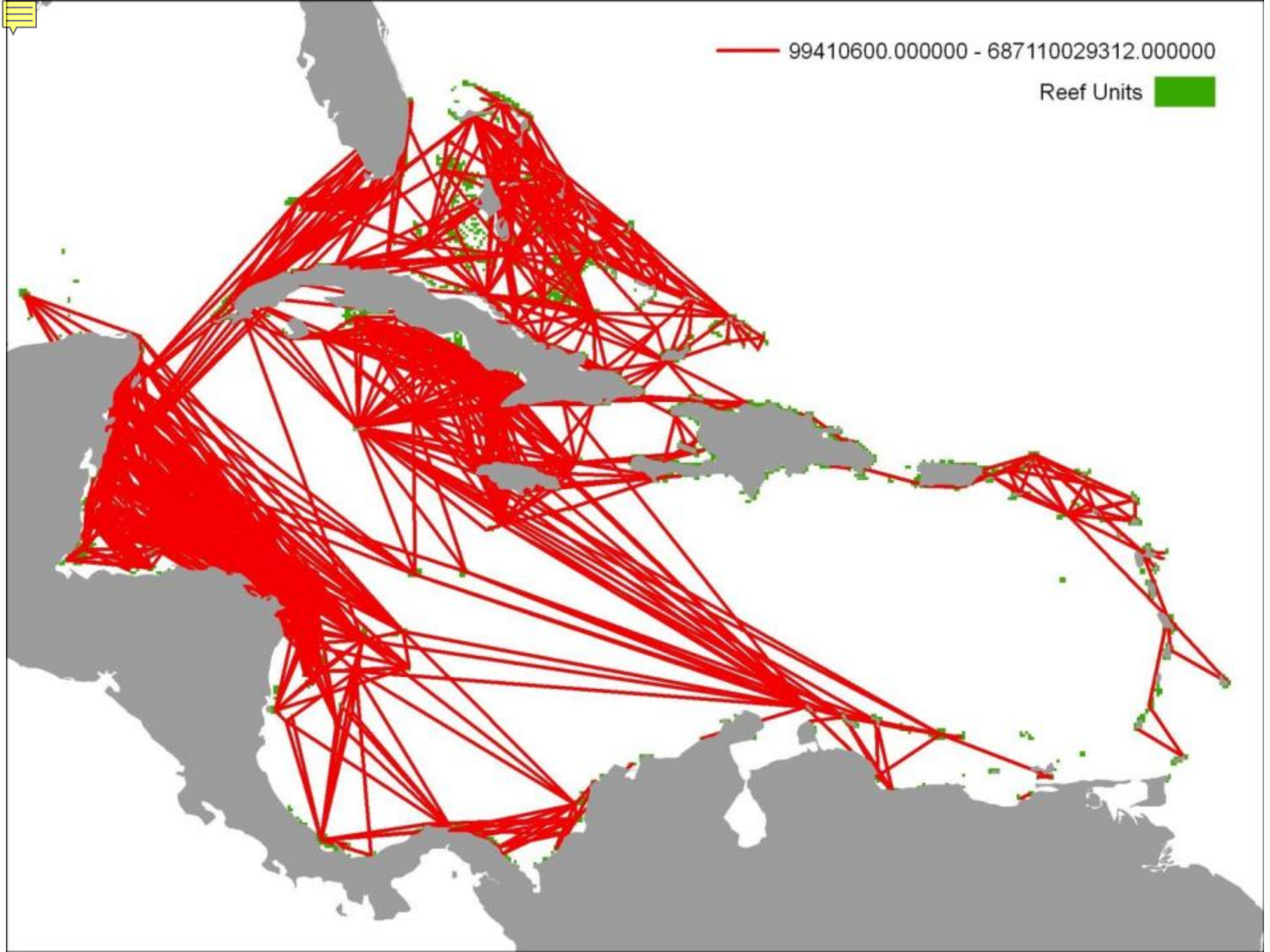


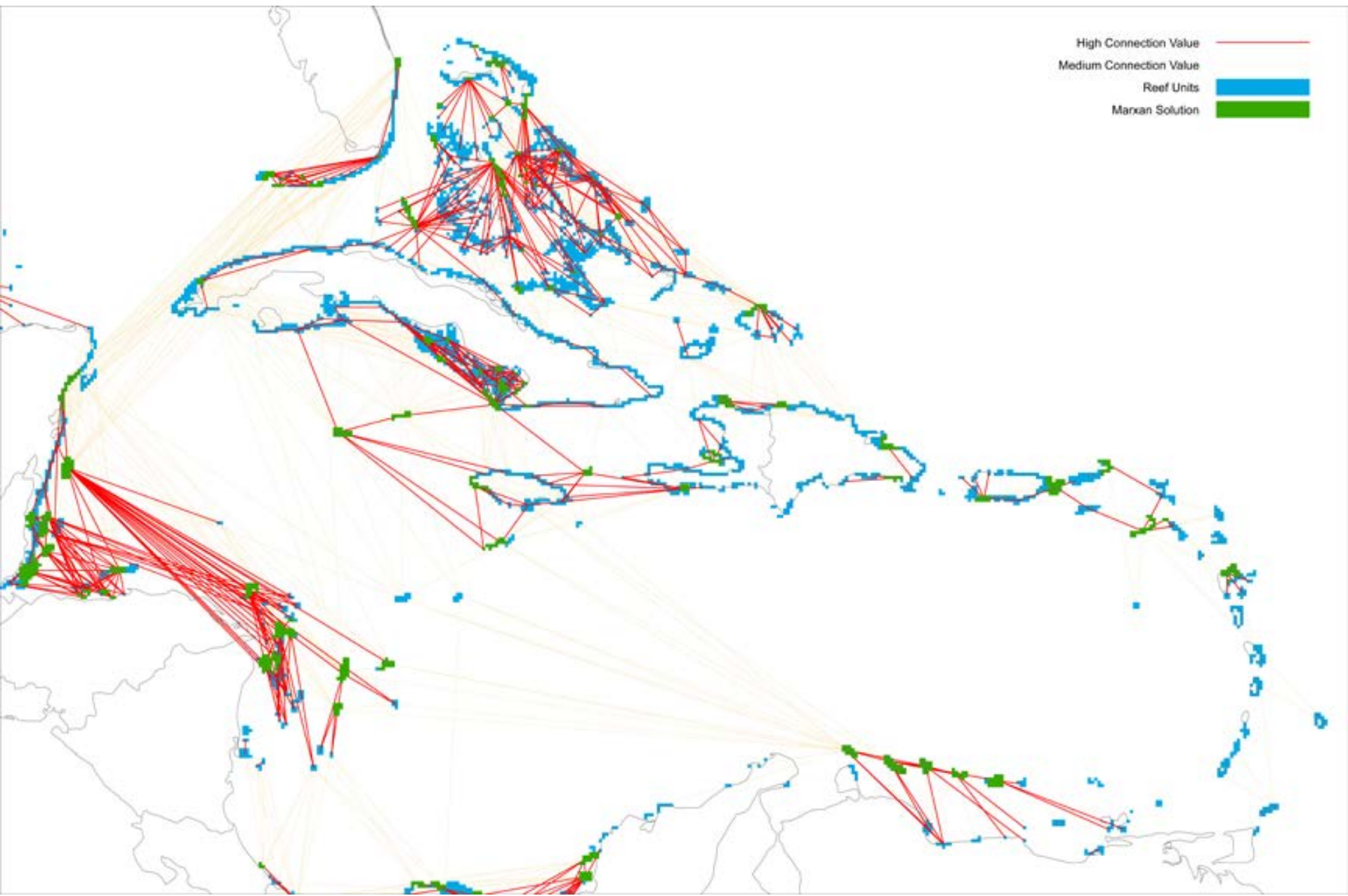
Mangrove Vulnerability Index

Vulnerability	
	12 - 18
	19 - 21
	22 - 26

99410600.000000 - 687110029312.000000

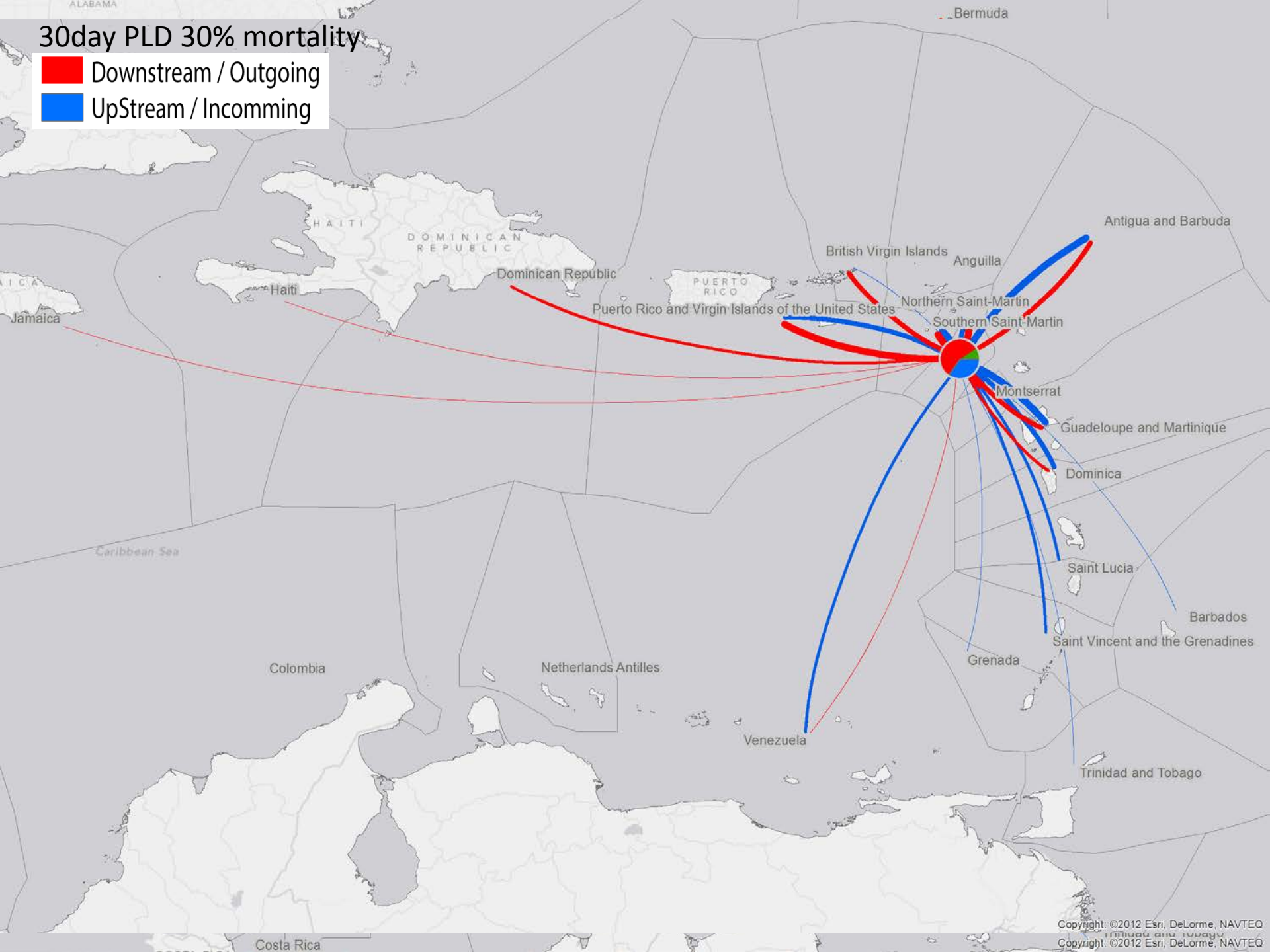
Reef Units 





30day PLD 30% mortality

- Downstream / Outgoing
- UpStream / Incomming



Modeled Dispersion by Country (Includes Self Contributions) - 30 PLD and 30 mortality

