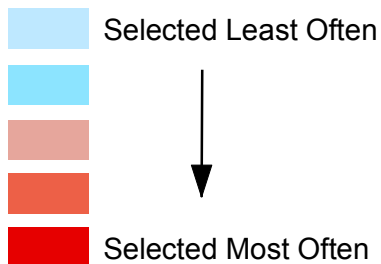


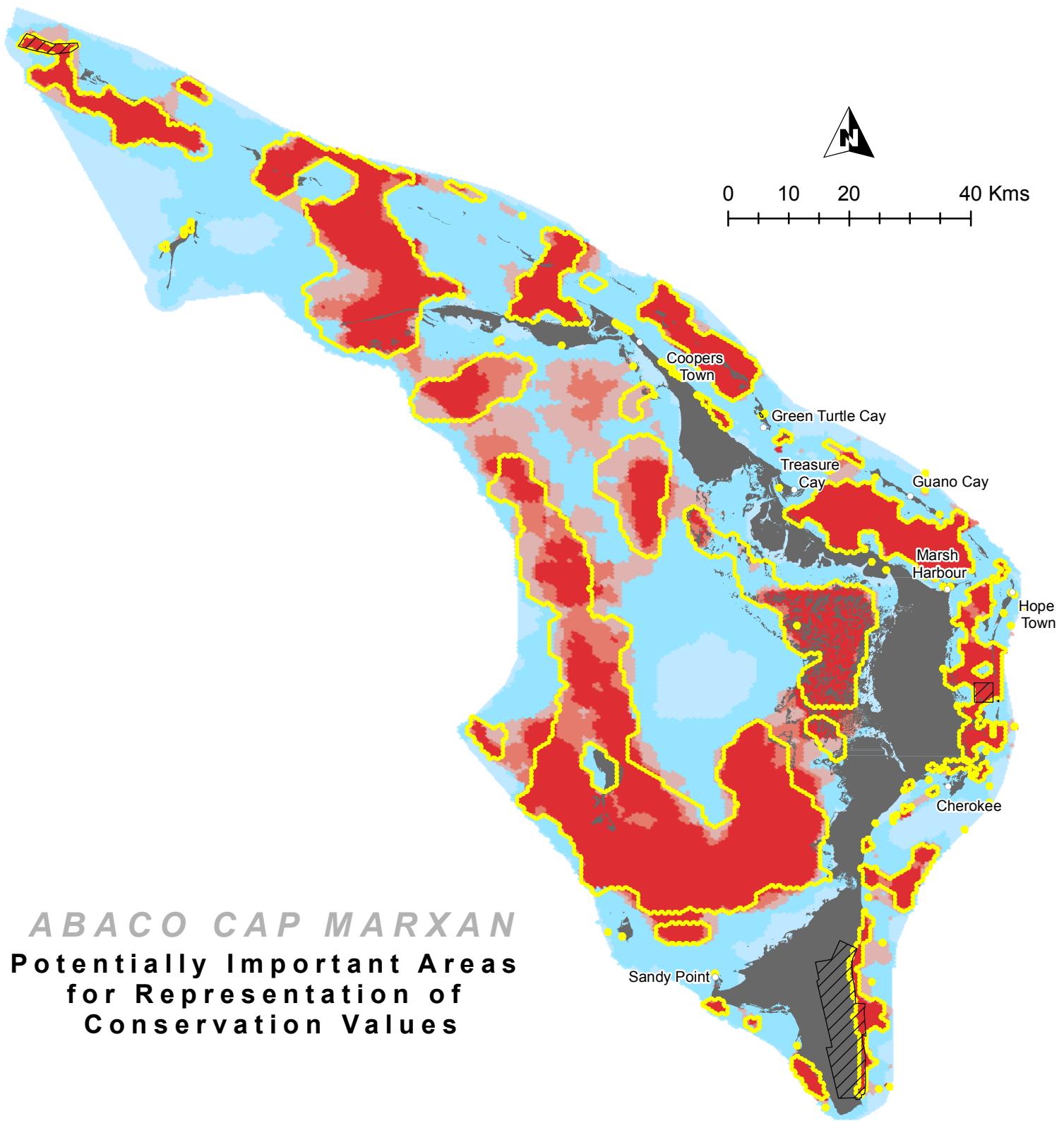
ABACO CAP MARXAN
Potentially Important Areas
for Representation of
Conservation Values

Number of times each area was selected as part of the 'best' representation solution



30% Representation "Best Run"
 -- Includes Environmental Risk Surface
 -- Protected Areas locked into scenario
 --25,266 x 40 hectare analysis units
 --10 million model iterations
 --10 model runs

 Designated protected areas



ABACO CAP MARXAN
Potentially Important Areas
for Representation of
Conservation Values

Number of times each area was selected as part of the 'best' representation solution

Selected Least Often



Selected Most Often

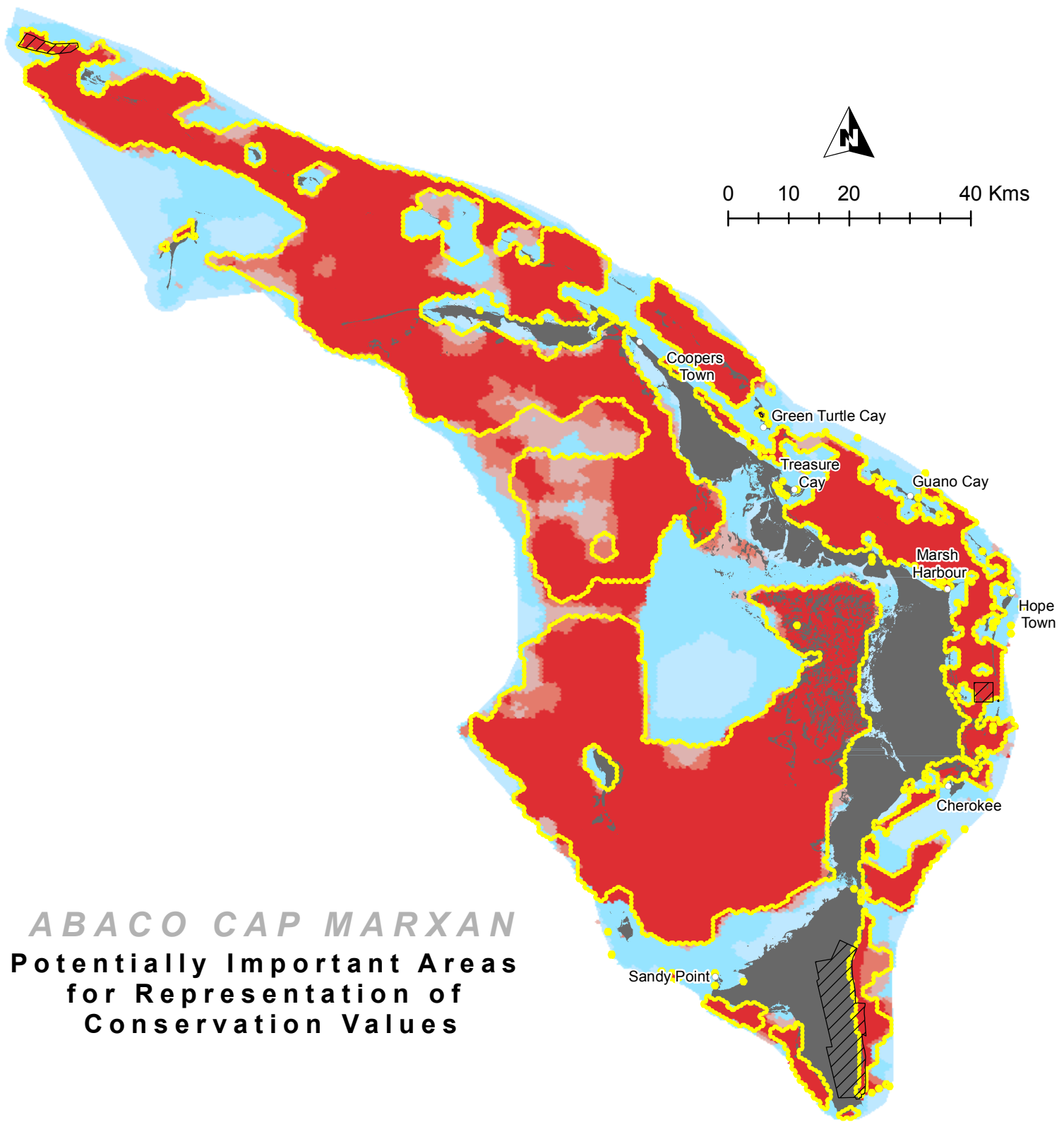


50% Representation "Best Run"

- Includes Environmental Risk Surface
- Protected Areas locked into scenario
- 25,266 x 40 hectare analysis units
- 10 million model iterations
- 10 model runs

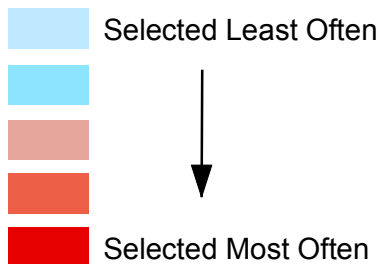


Designated protected areas



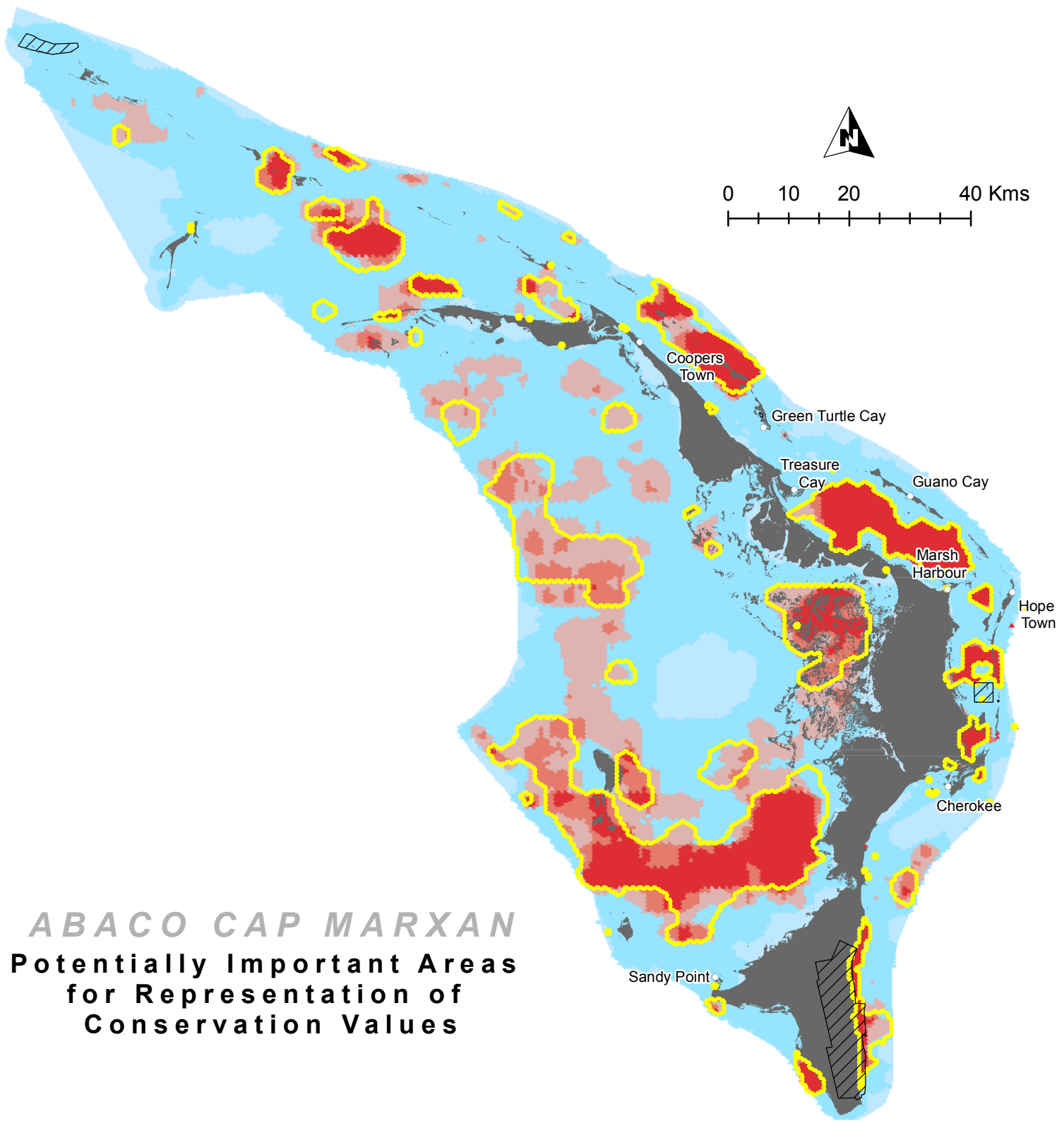
ABACO CAP MARXAN
Potentially Important Areas
for Representation of
Conservation Values

Number of times each area was selected as part of the 'best' representation solution



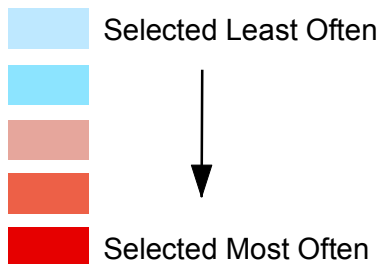
70% Representation "Best Run"
 -- Includes Environmental Risk Surface
 -- Protected Areas locked into scenario
 --25,266 x 40 hectare analysis units
 --10 million model iterations
 --10 model runs



 Designated protected areas

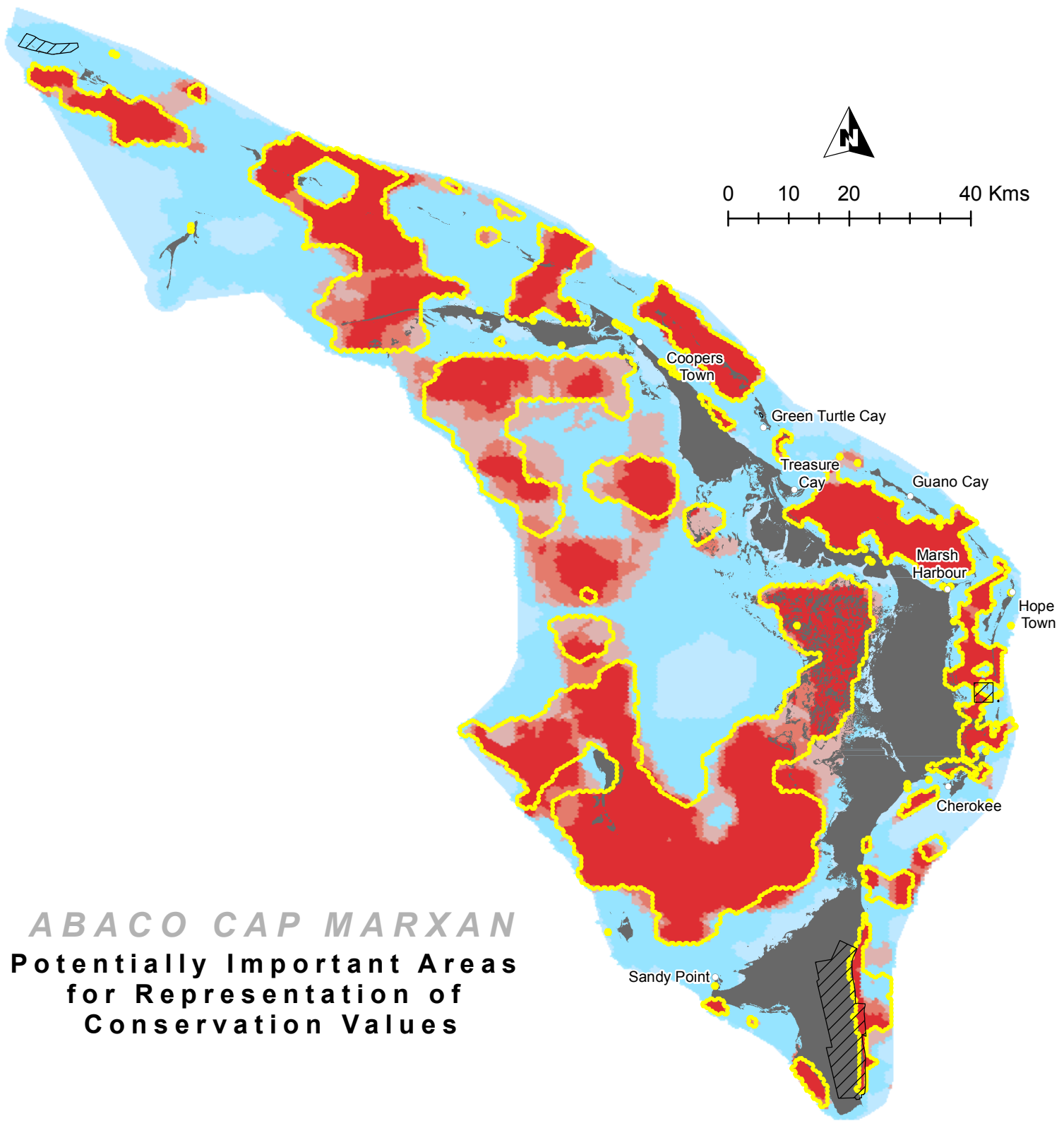


ABACO CAP MARXAN
Potentially Important Areas
for Representation of
Conservation Values

Number of times each area was selected as part of the 'best' representation solution

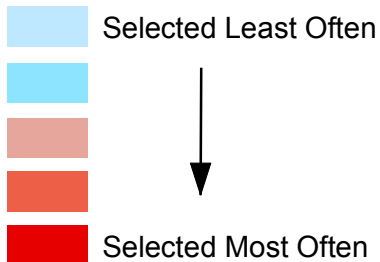




-  **30% Representation "Best Run"**
 - Includes Environmental Risk Surface
 - Protected Areas NOT locked into scenario
 - 25,266 x 40 hectare analysis units
 - 10 million model iterations
 - 10 model runs
-  Designated protected areas

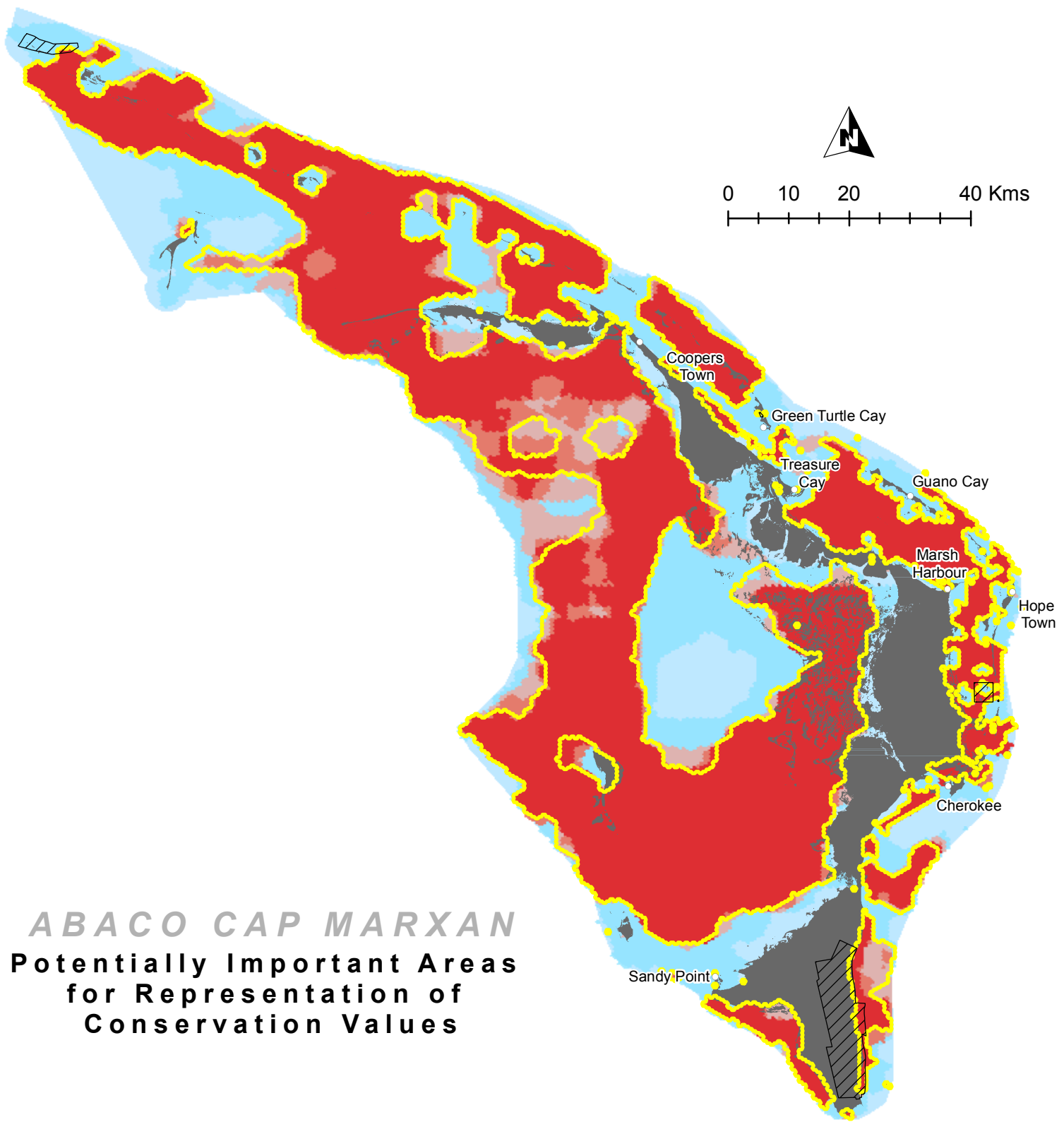


ABACO CAP MARXAN
Potentially Important Areas
for Representation of
Conservation Values

Number of times each area was selected as part of the 'best' representation solution

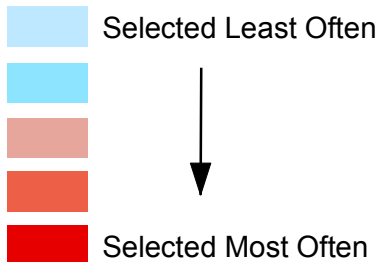




-  **50% Representation "Best Run"**
 - Includes Environmental Risk Surface
 - Protected Areas NOT locked into scenario
 - 25,266 x 40 hectare analysis units
 - 10 million model iterations
 - 10 model runs
-  Designated protected areas

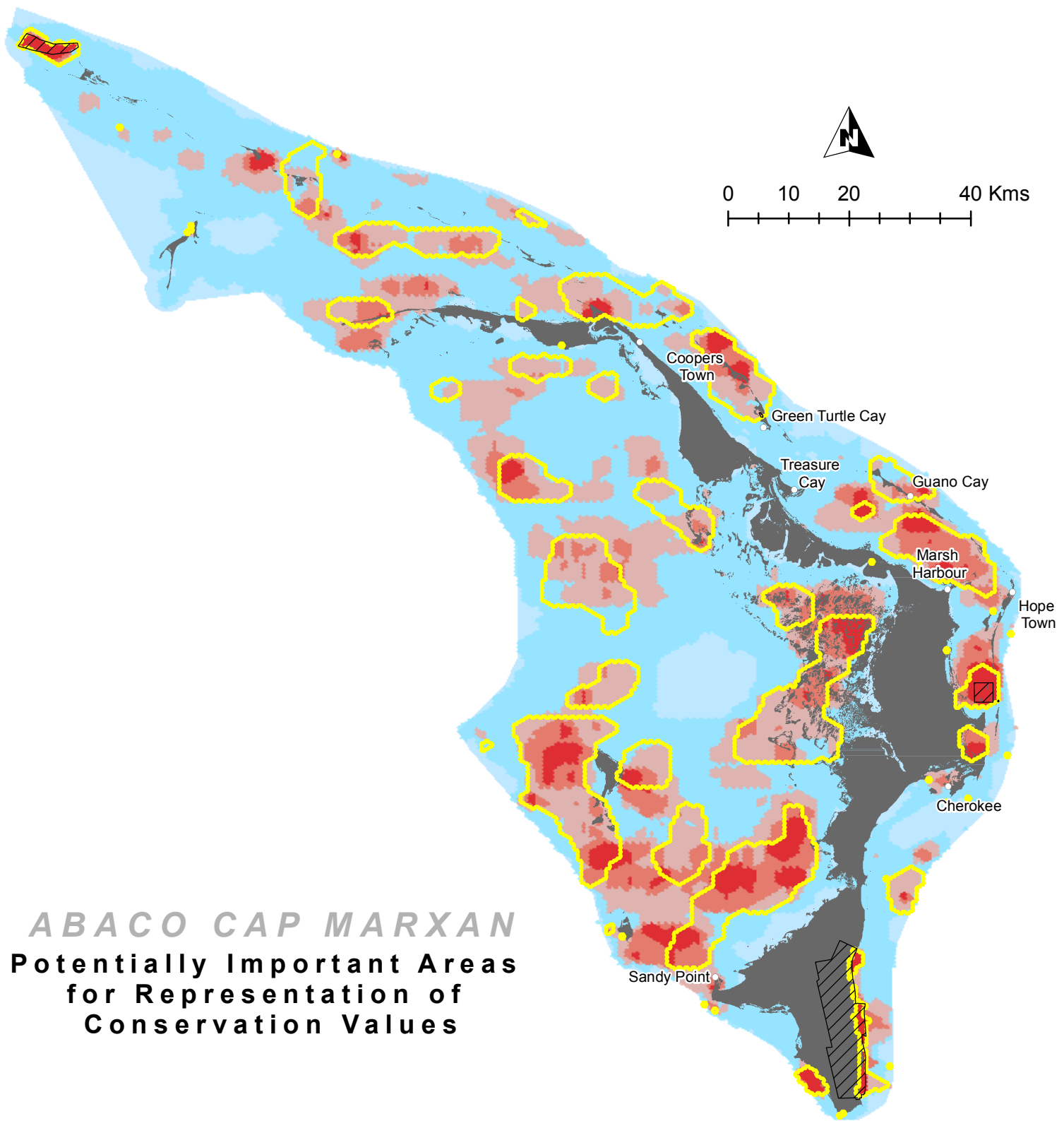


ABACO CAP MARXAN
Potentially Important Areas
for Representation of
Conservation Values

Number of times each area was selected as part of the 'best' representation solution



-  **70% Representation "Best Run"**
 - Includes Environmental Risk Surface
 - Protected Areas NOT locked into scenario
 - 25,266 x 40 hectare analysis units
 - 10 million model iterations
 - 10 model runs
-  Designated protected areas



ABACO CAP MARXAN
Potentially Important Areas
for Representation of
Conservation Values

Number of times each area was selected as part of the 'best' representation solution

Selected Least Often



Selected Most Often

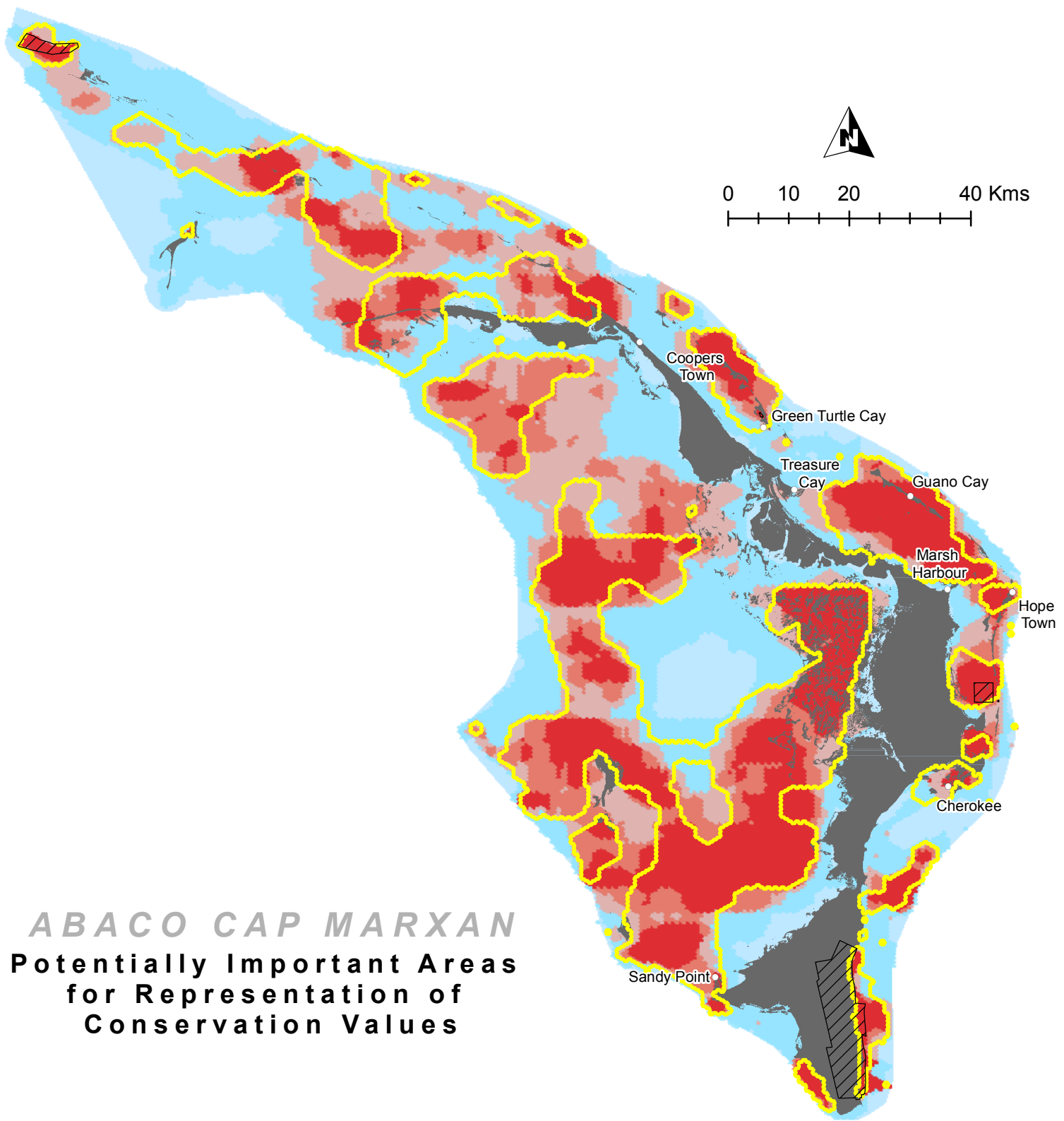


30% Representation "Best Run"

- DOES NOT include Environmental Risk Surface
- Protected Areas locked into scenario
- 25,266 x 40 hectare analysis units
- 10 million model iterations
- 10 model runs



Designated protected areas



ABACO CAP MARXAN
Potentially Important Areas
for Representation of
Conservation Values

Number of times each area was selected as part of the 'best' representation solution

Selected Least Often



Selected Most Often

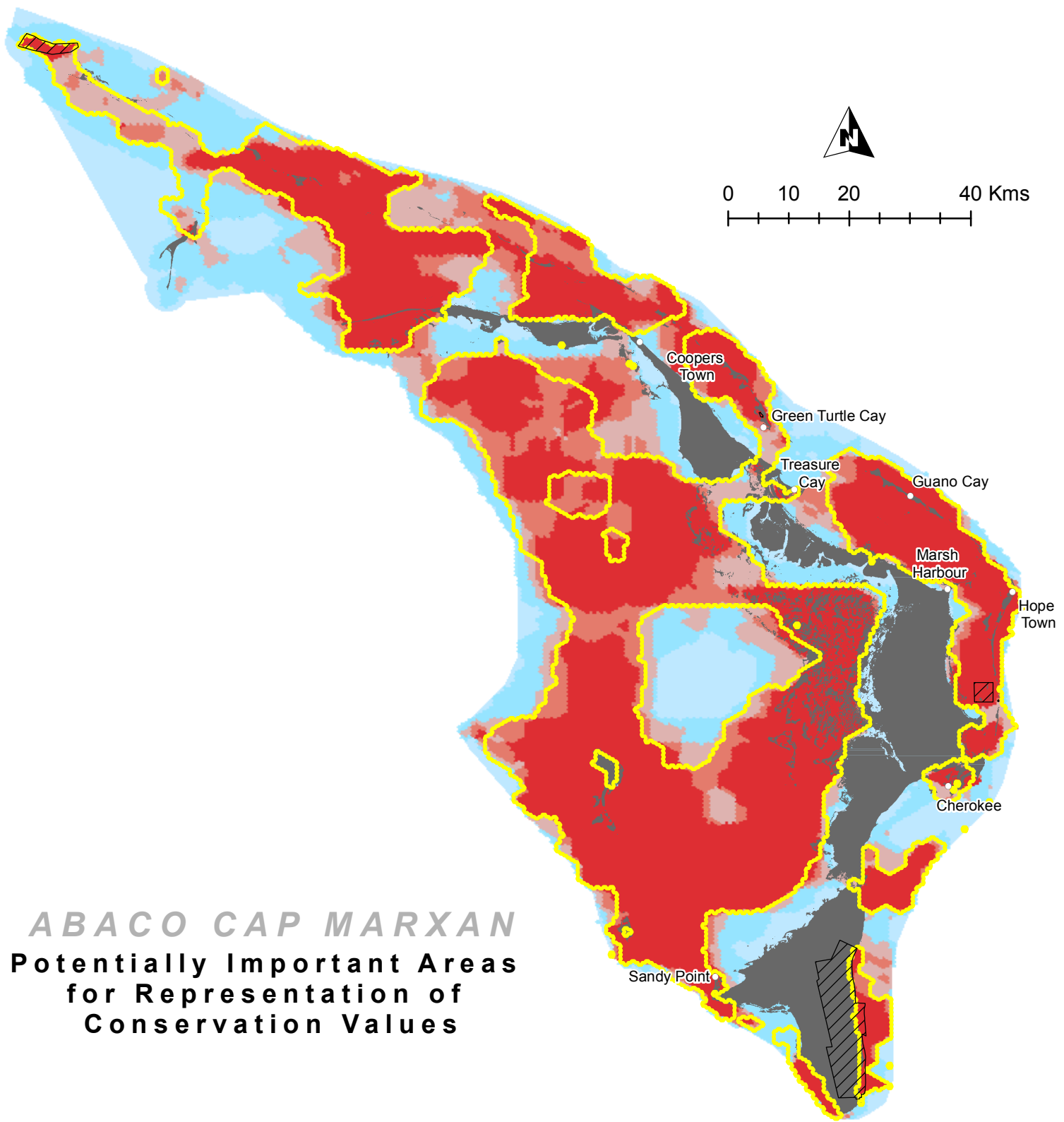


50% Representation "Best Run"

- DOES NOT include Environmental Risk Surface
- Protected Areas locked into scenario
- 25,266 x 40 hectare analysis units
- 10 million model iterations
- 10 model runs

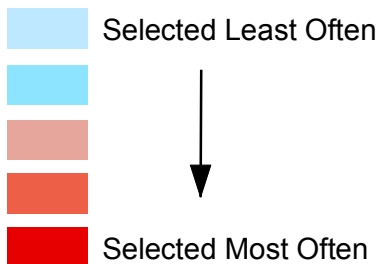


Designated protected areas



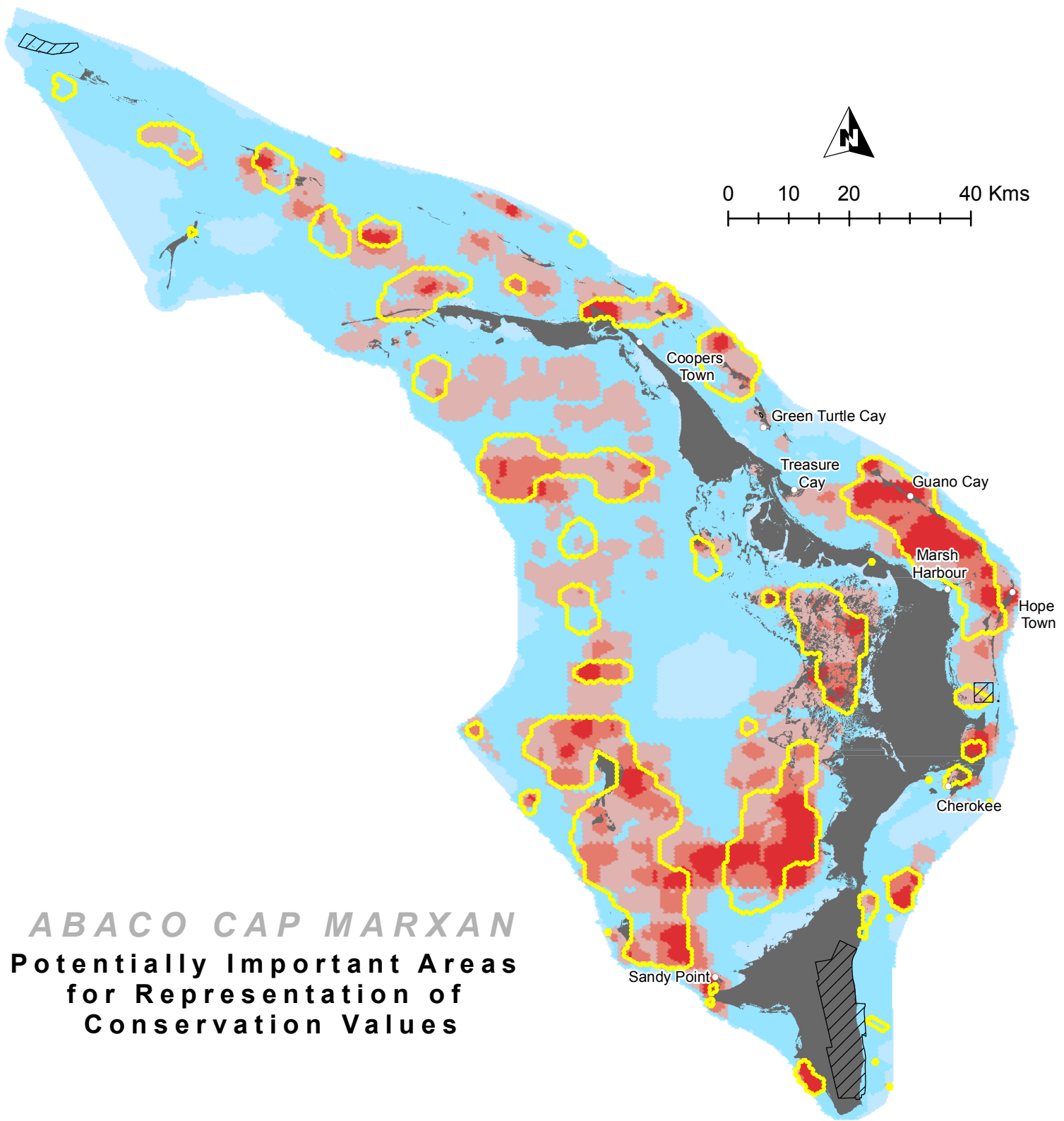
ABACO CAP MARXAN
Potentially Important Areas
for Representation of
Conservation Values

Number of times each area was selected as part of the 'best' representation solution



70% Representation "Best Run"
 -- DOES NOT include Environmental Risk Surface
 -- Protected Areas locked into scenario
 --25,266 x 40 hectare analysis units
 --10 million model iterations
 --10 model runs

 Designated protected areas



ABACO CAP MARXAN
Potentially Important Areas
for Representation of
Conservation Values

Number of times each area was selected as part of the 'best' representation solution

Selected Least Often



Selected Most Often

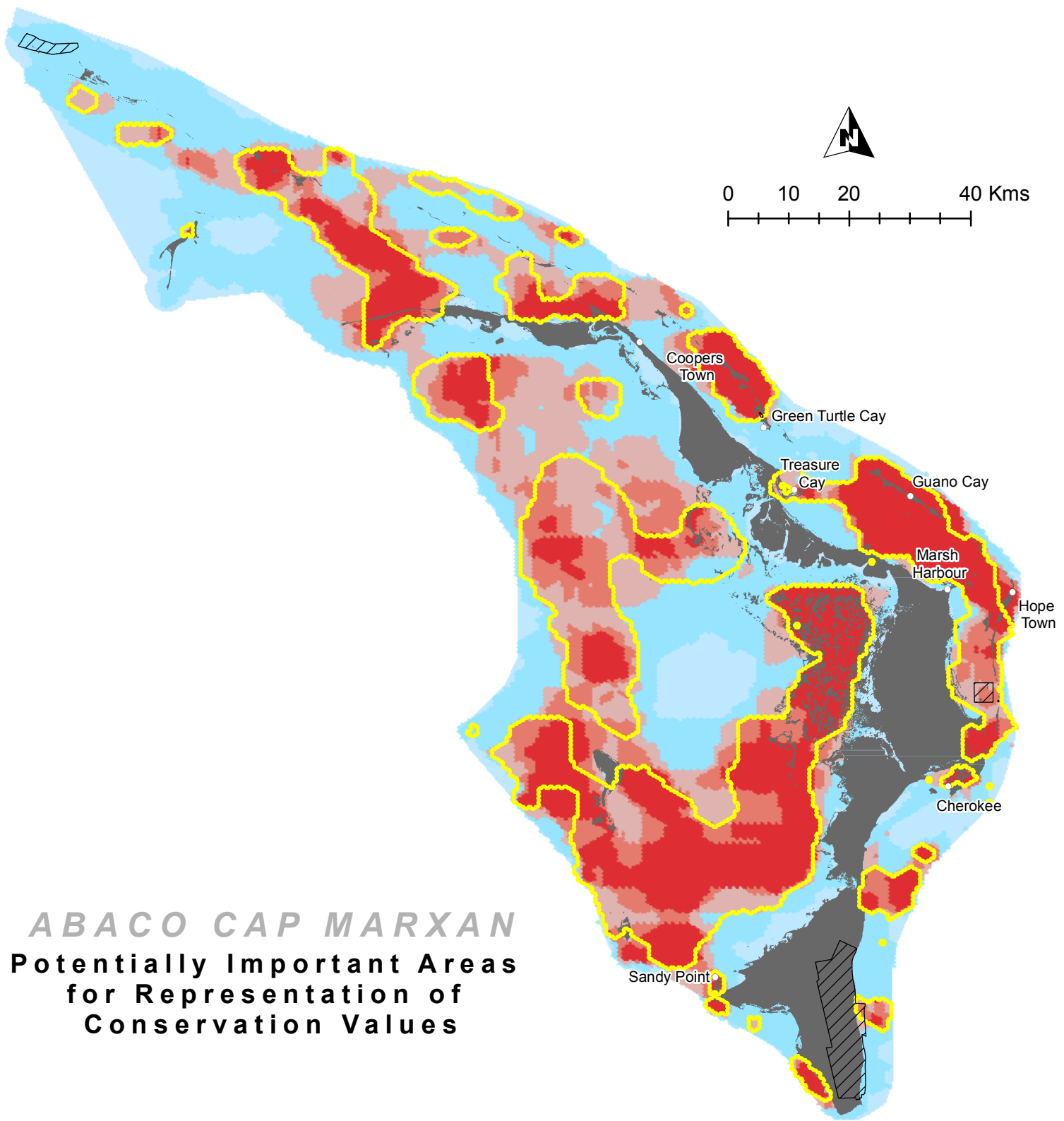


30% Representation "Best Run"

- DOES NOT include Environmental Risk Surface
- Protected Areas NOT locked into scenario
- 25,266 x 40 hectare analysis units
- 10 million model iterations
- 10 model runs



Designated protected areas



ABACO CAP MARXAN
Potentially Important Areas
for Representation of
Conservation Values

Number of times each area was selected as part of the 'best' representation solution

Selected Least Often



Selected Most Often

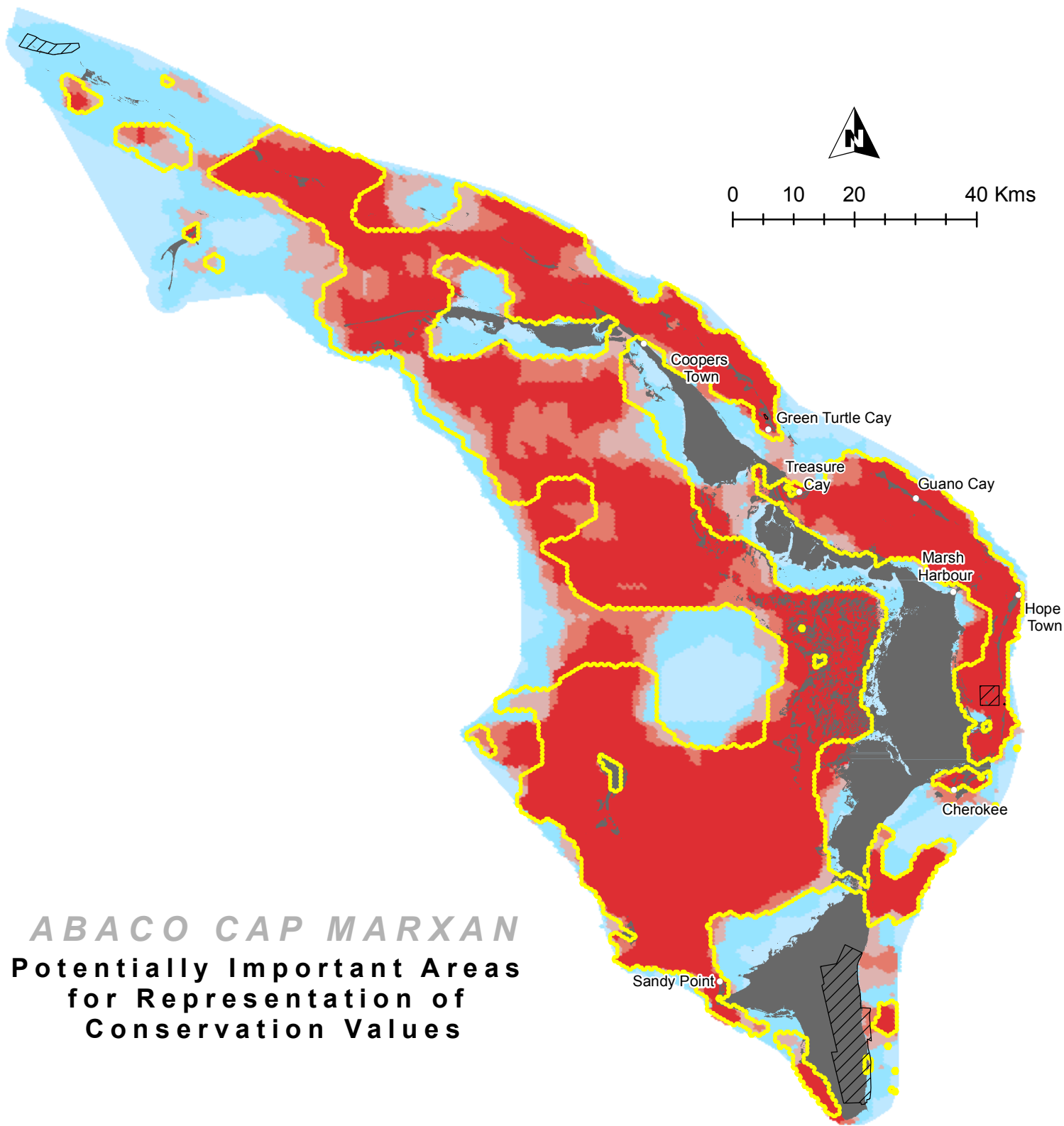


50% Representation "Best Run"

- DOES NOT include Environmental Risk Surface
- Protected Areas NOT locked into scenario
- 25,266 x 40 hectare analysis units
- 10 million model iterations
- 10 model runs

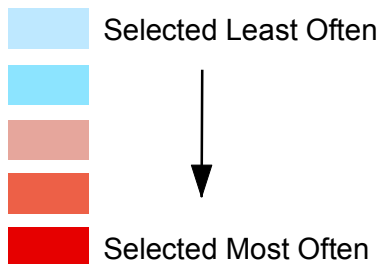


Designated protected areas



ABACO CAP MARXAN
Potentially Important Areas
for Representation of
Conservation Values

Number of times each area was selected as part of the 'best' representation solution



70% Representation "Best Run"
 -- DOES NOT include Environmental Risk Surface
 -- Protected Areas NOT locked into scenario
 --25,266 x 40 hectare analysis units
 --10 million model iterations
 --10 model runs

 Designated protected areas