

Map 4: Central Appalachian Ecoregion Element Occurrences

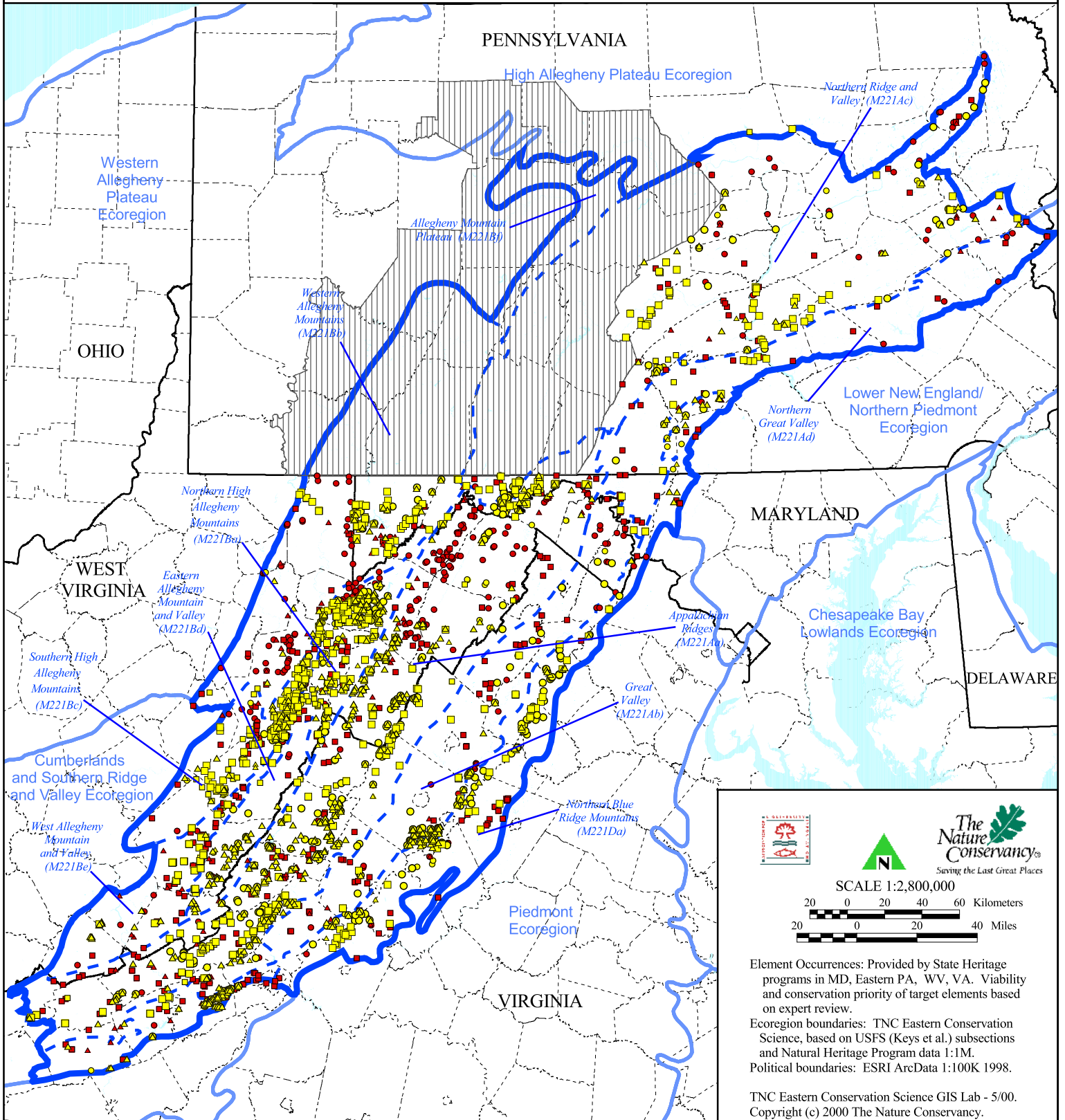
Portfolio Element Occurrences

- Animal and Invertebrate
- ▲ Plant
- Community
- ▨ No Element Occurrence Data Available

Non-Qualifying Element Occurrences

- Animal or Invertebrate
- ▲ Plant
- Community

- State Boundary
- - - County Boundary
- Ecoregion Boundary
- - - Subsection Boundary



Element Occurrences: Provided by State Heritage programs in MD, Eastern PA, WV, VA. Viability and conservation priority of target elements based on expert review.

Ecoregion boundaries: TNC Eastern Conservation Science, based on USFS (Keys et al.) subsections and Natural Heritage Program data 1:1M.

Political boundaries: ESRI ArcData 1:100K 1998.

TNC Eastern Conservation Science GIS Lab - 5/00.
Copyright (c) 2000 The Nature Conservancy.