



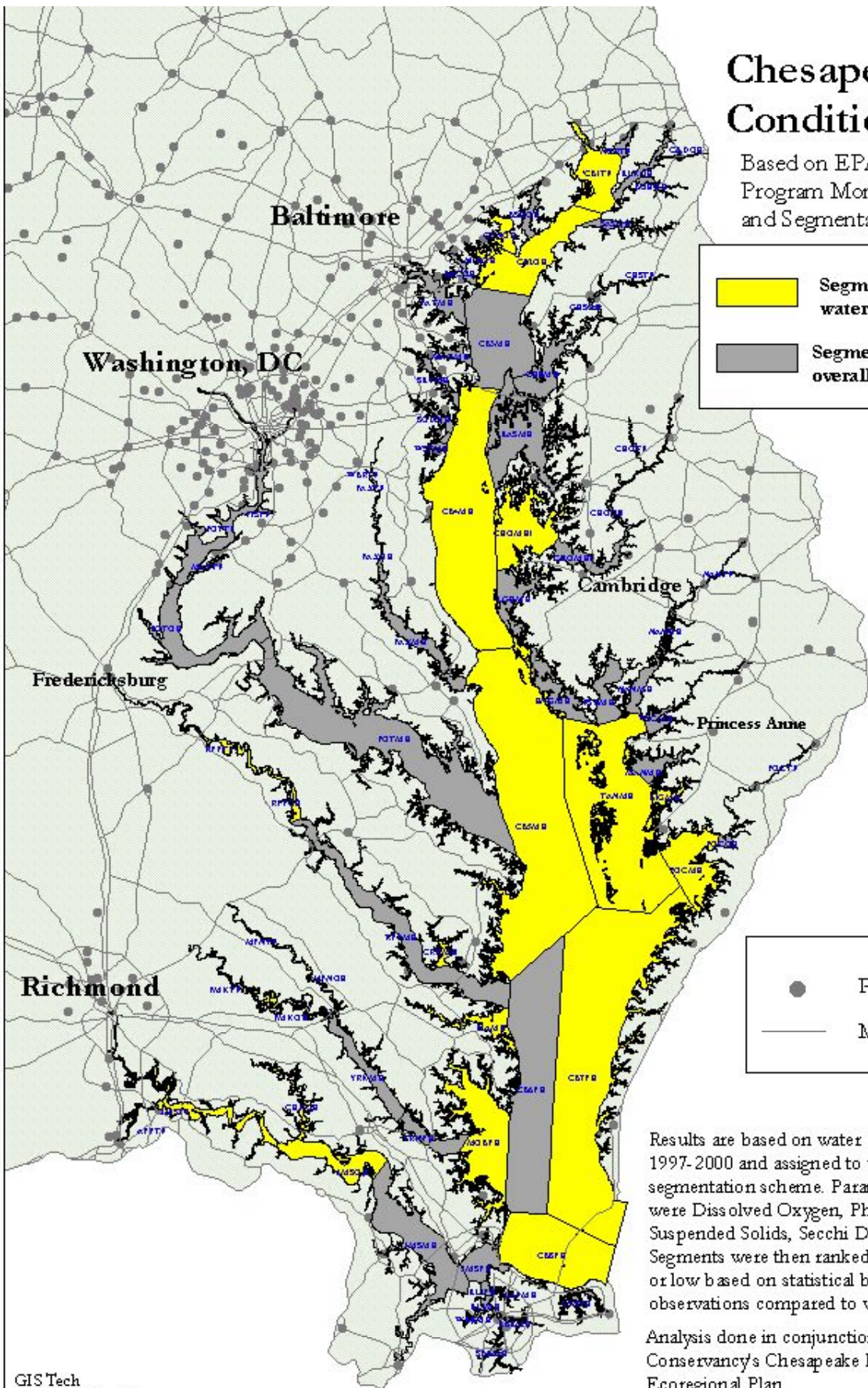


Chesapeake Bay Condition Analysis

Based on EPA Chesapeake Bay Program Monitoring Program Data and Segmentation Scheme.

	Segments with the best overall water quality observations
	Segments with medium or low overall water quality observations

	Populated places
	Major roads



Results are based on water quality observations from 1997-2000 and assigned to the Chesapeake Bay Program segmentation scheme. Parameters included in this analysis were Dissolved Oxygen, Phosphorus, Nitrogen, Total Suspended Solids, Secchi Depth, and chlorophyll. Segments were then ranked as being high, medium, or low based on statistical breakdown of the actual observations compared to water quality targets.

Analysis done in conjunction with The Nature Conservancy's Chesapeake Bay Lowlands Ecoregional Plan.