

Map 1: Full Portfolio



Scale 1 : 1,350,000
 10 0 10 Kilometers
 5 0 5 10 Miles



Matrix forest blocks:

- 10-year action
- Other

Selected streams (numbered):

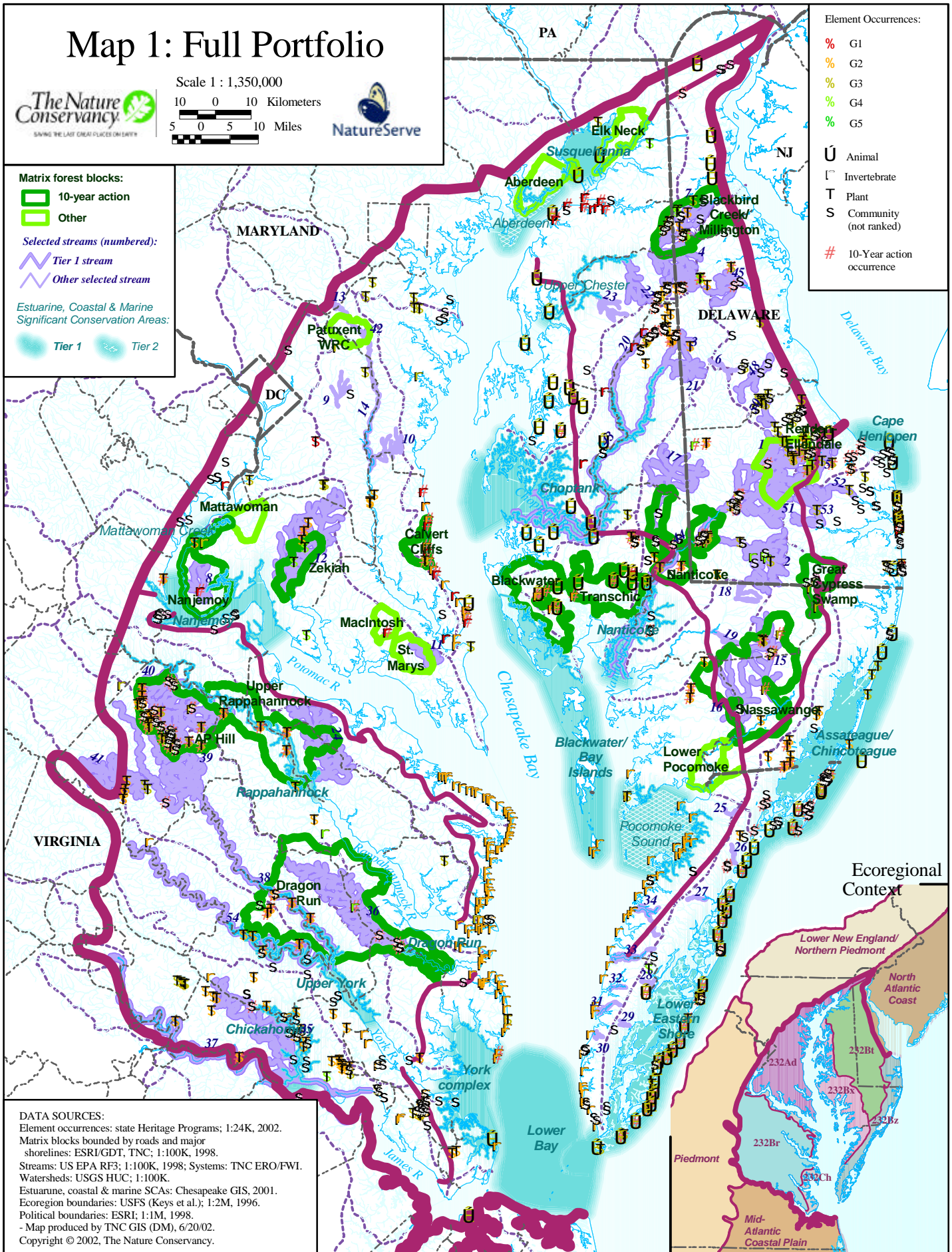
- Tier 1 stream
- Other selected stream

Estuarine, Coastal & Marine Significant Conservation Areas:

- Tier 1
- Tier 2

Element Occurrences:

- % G1
- % G2
- % G3
- % G4
- % G5
- U Animal
- I Invertebrate
- T Plant
- S Community (not ranked)
- # 10-Year action occurrence



DATA SOURCES:
 Element occurrences: state Heritage Programs; 1:24K, 2002.
 Matrix blocks bounded by roads and major shorelines: ESRI/GDT, TNC; 1:100K, 1998.
 Streams: US EPA RF3; 1:100K, 1998; Systems: TNC ERO/FWI.
 Watersheds: USGS HUC; 1:100K.
 Estuarine, coastal & marine SCAs: Chesapeake GIS, 2001.
 Ecoregion boundaries: USFS (Keys et al.); 1:2M, 1996.
 Political boundaries: ESRI; 1:1M, 1998.
 - Map produced by TNC GIS (DM), 6/20/02.
 Copyright © 2002, The Nature Conservancy.