

Element Occurrences: Species



Scale 1 : 1,350,000
 10 0 10 Kilometers
 5 0 5 10 Miles



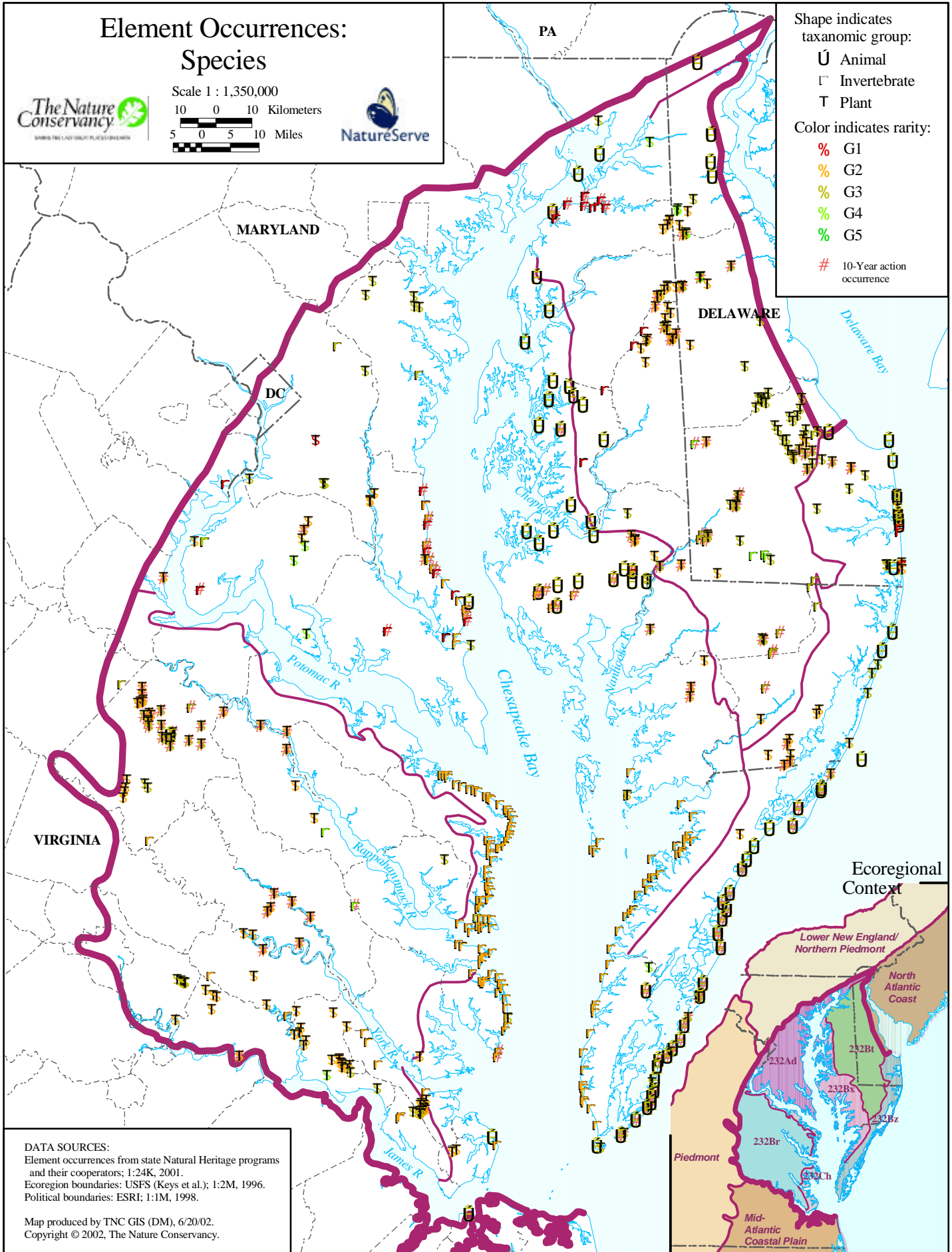
Shape indicates taxonomic group:

- U Animal
- Invertebrate
- T Plant

Color indicates rarity:

- % G1
- % G2
- % G3
- % G4
- % G5

10-Year action occurrence



DATA SOURCES:
 Element occurrences from state Natural Heritage programs and their cooperators; 1:24K, 2001.
 Ecoregion boundaries: USFS (Keys et al.); 1:2M, 1996.
 Political boundaries: ESRI; 1:1M, 1998.

Map produced by TNC GIS (DM), 6/20/02.
 Copyright © 2002, The Nature Conservancy.