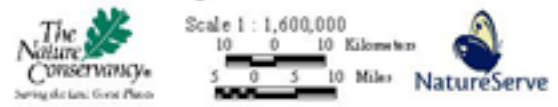
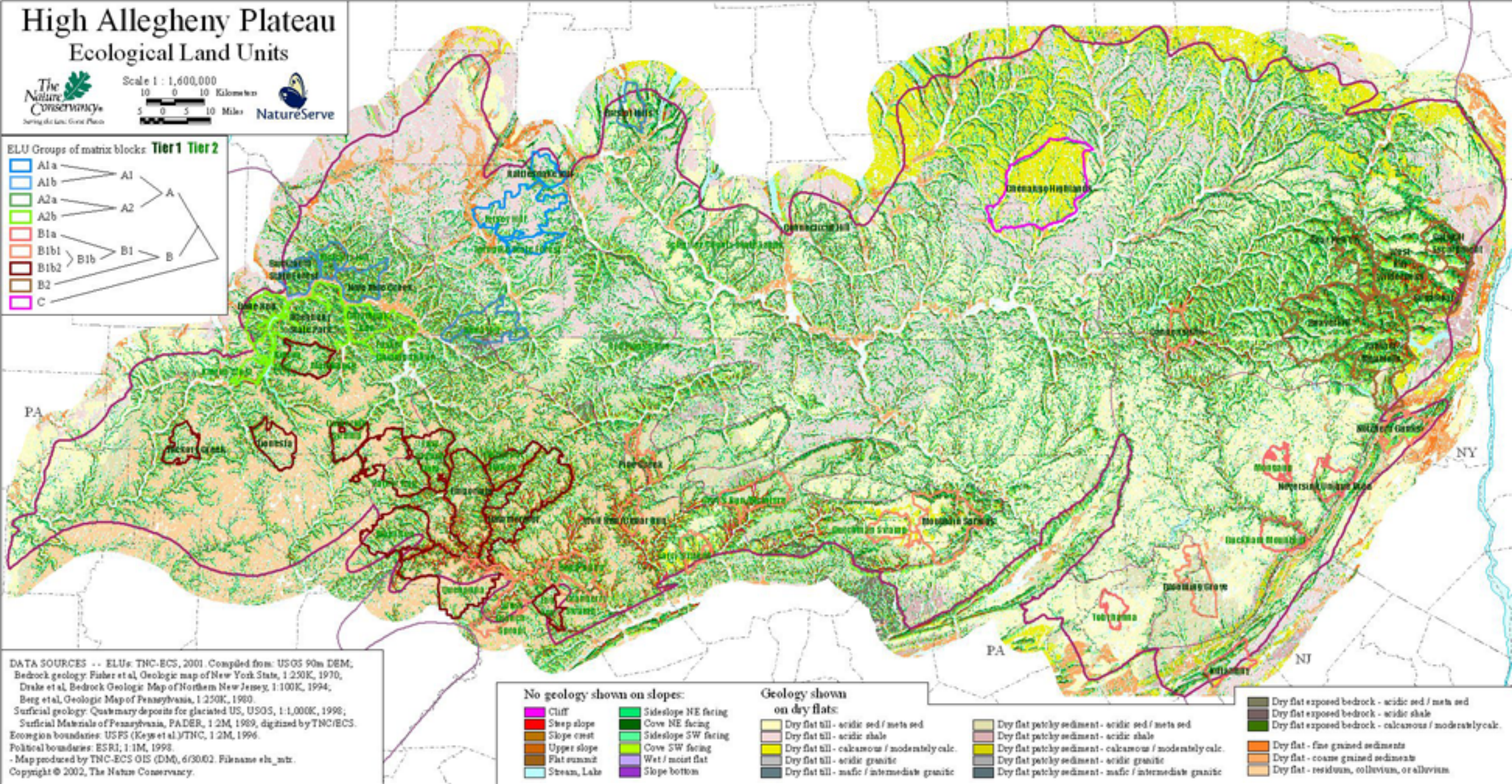
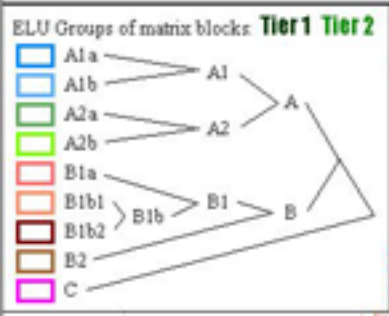


High Allegheny Plateau Ecological Land Units



Scale 1 : 1,600,000
 10 0 10 Kilometers
 5 0 5 10 Miles



DATA SOURCES -- ELUs: TNC-ECS, 2001. Compiled from: USGS 90m DEM; Bedrock geology: Fisher et al, Geologic map of New York State, 1:250K, 1970; Drake et al, Bedrock Geologic Map of Northern New Jersey, 1:100K, 1994; Berg et al, Geologic Map of Pennsylvania, 1:250K, 1980; Surficial geology: Quaternary deposits for glaciated US, USGS, 1:1,000K, 1998; Surficial Materials of Pennsylvania, PADER, 1:2M, 1989, digitized by TNC/ECS. Ecoregion boundaries: USFS (Keys et al.)/TNC, 1:2M, 1996. Political boundaries: ESRI, 1:1M, 1998. - Map produced by TNC-ECS OIS (DM), 6/30/02. Filename: elu_mtr. Copyright © 2002, The Nature Conservancy.

No geology shown on slopes:

- Cliff
- Steep slope
- Slope crest
- Upper slope
- Flat summit
- Stream, Lake
- Sideslope NE facing
- Cove NE facing
- Sideslope SW facing
- Cove SW facing
- Wet / moist flat
- Slope bottom

Geology shown on dry flats:

- Dry flat till - acidic sed / mets sed
- Dry flat till - acidic shale
- Dry flat till - calcareous / moderately calc.
- Dry flat till - acidic granitic
- Dry flat till - mafic / intermediate granitic

- Dry flat patchy sediment - acidic sed / mets sed
- Dry flat patchy sediment - acidic shale
- Dry flat patchy sediment - calcareous / moderately calc.
- Dry flat patchy sediment - acidic granitic
- Dry flat patchy sediment - mafic / intermediate granitic

- Dry flat exposed bedrock - acidic sed / mets sed
- Dry flat exposed bedrock - acidic shale
- Dry flat exposed bedrock - calcareous / moderately calc.
- Dry flat - fine grained sediments
- Dry flat - coarse grained sediments
- Dry flat - residuum, colluvium, or alluvium