

Experiences of community based monitoring in the Yucatán Peninsula



Goals of the Community MRV systems :

- Generate quality data to reach certification: E.g. FSC or Voluntary Carbon Market
- Build local capacities that allow long term monitoring
- Allow stronger appropriation of new concepts such as forest carbon & safeguard monitoring for REDD+
- Improve the sustainability of agriculture and forest management practices



Plan Vivo
Carbon management and rural livelihoods



Location



Case 1: Carbon monitoring system in the Selva Maya U'yool'che A.C.



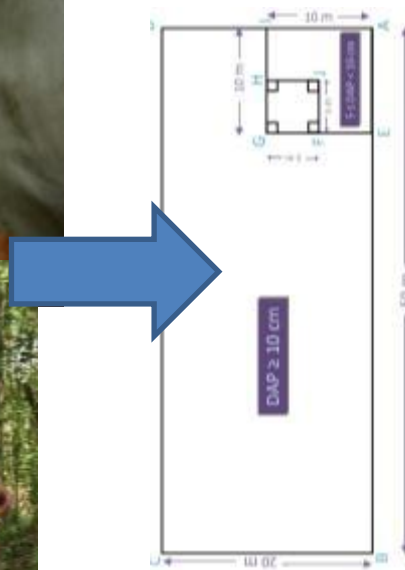
Introduction

Case study

Applicability

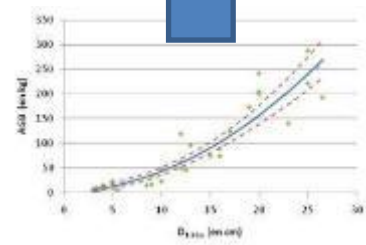
Prospect

Use of Cyber Tracker, and adapted plot surveying methodology



No.	ESPECIE	ALTURA	CMTS	DN	ECUACION RECOMEN	Biomasa 2a Eq (Kg)
2	Palo volador	1.9	2	0.64	0.03	0.04
3	Jáben	1.7	2	0.64	0.03	0.04
4	Jáben	1.7	2	0.64	0.03	0.04
5	Jáben	1.8	2	0.64	0.03	0.04
6	Kelenche	4	2	0.64	0.07	0.08
	Chitboob	2.3	2	0.64	0.0	
	boob	2.2	2	0.64	0.0	
	eranche	1.8	3	0.95	0.0	
	Jáben	3	3	0.95	0.1	
11	Zakol	2	3	0.95	0.08	0.11
12	Kelenche	2.5	3	0.95	0.10	0.11
13	Pechkatan	2.5	3	0.95	0.10	0.11
14	Jáben	2.4	3	0.95	0.10	0.11
15	Sacoloche	1.9	3	0.95	0.08	0.11
16	Sacoloche	2.3	3	0.95	0.09	0.11
17	Jáben	3	3	0.95	0.12	0.11
18	Pata de vaca	3	3	0.95	0.12	0.11
19	Jáben	2.8	3	0.95	0.11	0.11
20	Chitboob	1.9	3	0.95	0.08	0.11
21	Bakzoc	5	3	0.95	0.19	0.11
22	Jáben	2	3	0.95	0.08	0.11
23	Cokche	3	3	0.95	0.12	0.11
24	Chitboob	2	3	0.95	0.10	0.11
25	Chitboob	2.3	3	0.95	0.09	0.11
26	Bakzoc	2.7	3	0.95	0.11	0.11
27	Bakzoc	2	3	0.95	0.08	0.11

Tons of C per hectare



Introduction

Case study

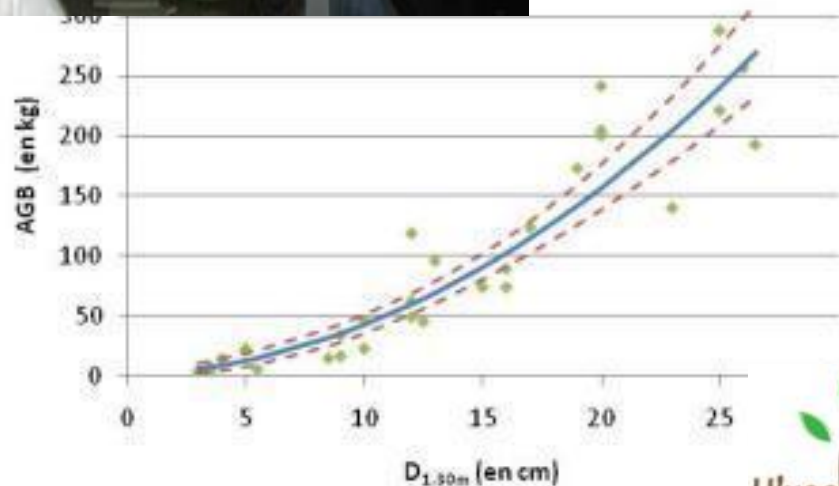
Applicability

Prospect

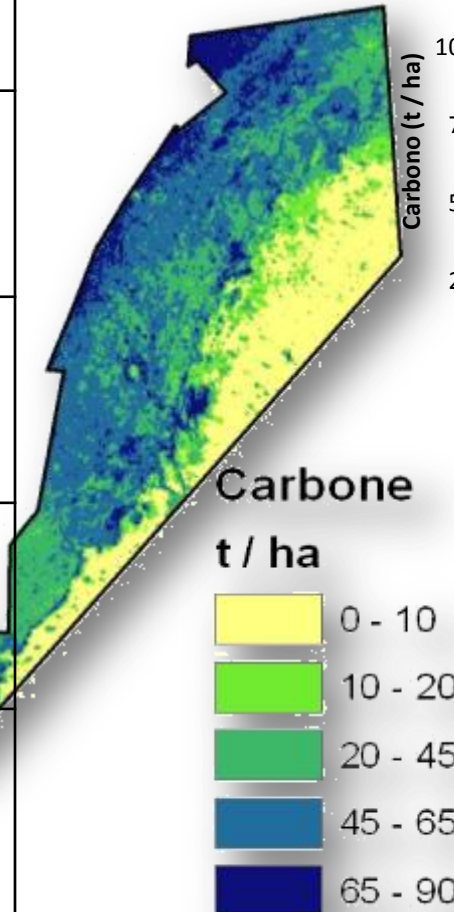
Development NGO + Community + Academy of 4 local allometric equation



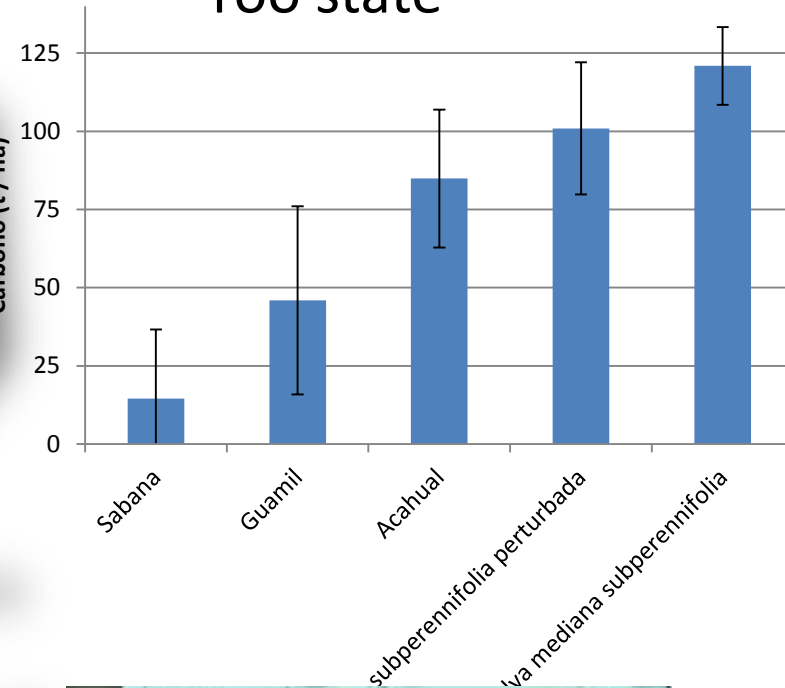
Field data collected by community technicians
Joint data analysis, presentation of the full results to the community
Verification and validation by ECOSUR



	media (tC/ha)
Huamil	45.9
Acahual	84.9
Selva perturbada	100.9
Selva mediana	120.9



Result: Quantification of Carbon stocks in the center of Quintana Roo state



Case 2: Growth rate study in Semi-evergreen forest



Case 2:

- Goal: to evaluate the growing rate of multiple species in the Selva Maya
- Process started in 2007
- + 800 dendrometer rings in place



Case 2: growth rate study in Semi-evergreen forest

- Monitoring by the community
- Data processing in the botanical garden of NY -5 years
- Data will be used directly to improve the accuracy of the management plans



Case 3: MRV System for the Campeche State

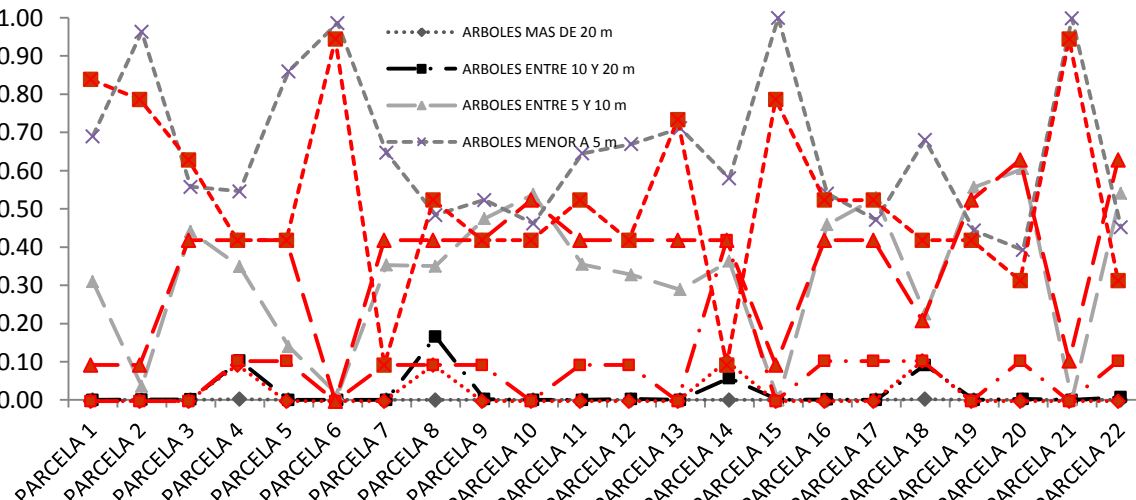


Case 3: Community monitoring in Calakmul ECOSUR



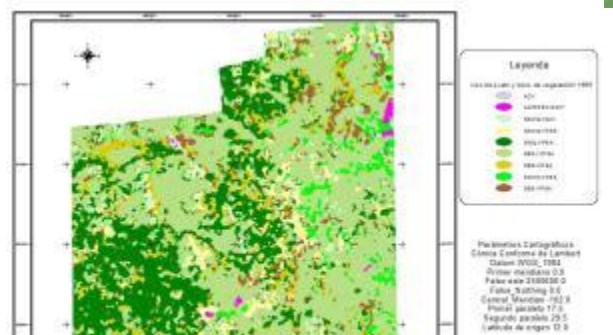
ECOSUR compared 2 methodologies:

Quantitative – Scientific - Technical
VS
Community – Semi-quantitative



- guide books for the communities
- Validation of the quality of the data collected by the communities

Edad (años)	Cuanti tativo	Semi- Cuantitativo
5	3.96	4.2
10	20.72	18.7
17	37.54	34.3
50	86.48	93.46



Case 4: Safeguards & Co-benefits monitoring system in Mayan Communities



Identification & community monitoring system for key attributes for the participatory identification of high conservation value forest

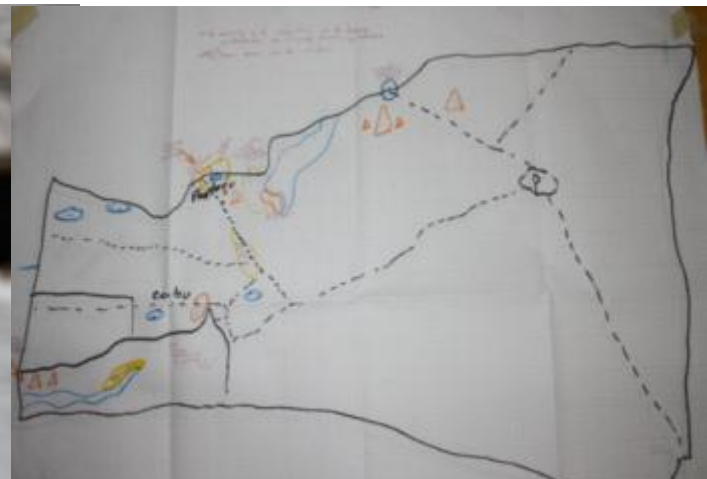


- Use of Cyber Tracker for wood consumption and avoided emissions with wood stove study



Community strategies bases in “community science”

- Best practices in agriculture and forestry
- Improve the sustainability of community forest management
- Biodiversity management
- Voluntary market forest carbon projects
- Fire management



“community science” can be useful to national MRV strategy

- Local allometric equation
- High-quality data, based in field assessment, that can improve the quality of the MRV system
- Inputs for models (e.g. growing rate for CCBM-CFS3)
- Evaluation of degradation
- Safeguards monitoring system



Outlook

- Strengthen and expand those systems
- External validation for the methodologies
- Secure long term finance
- Systematize & stock in a efficient way the information
- Train more people, and generate exchange between national and international experiences

Thank you for your attention!



spoust@tnc.org



Case 1 & 4:

www.uyoolche.org.mx

- 983 83 40176
- Contacto: Omar Martinez:
- supra_1309@hotmail.com

Contacto:

Case 2:

- Contacto: Silvia Purata
- puratasilvia@gmail.com

Case 3:

- Contacto: Da. Ligia Ezparza:
- lesparza@ecosur.mx