

CASE STUDIES IN COMMUNITY GREEN DEVELOPMENT

Envisioning a Green & Prosperous Future with the Berau Forest Carbon Program, Indonesia

Herlina Hartanto, Lisa Hayden, Erin Myers Madeira, Tomy S. Yulianto and Taufiq Hidayat



“From birth to death, wood is part of our lives. If you destroy the forest, you destroy our life.”

—Uliu Dau, Long Laai's village accountant.



The people of Berau, Indonesia, especially those living in remote forested areas, are facing choices about the source of their livelihoods and the fate of their forests. For many people, the forest is central to their identity and livelihoods; however, the prevailing model of development has been based on converting natural forests to other land uses. The Berau Forest Carbon Program (“the Berau Program”) presents the people of Berau with sustainable development opportunities that achieve economic growth and forest conservation goals.

As a main partner in the Berau Program, The Nature Conservancy developed and is implementing an integrated community engagement framework that is founded on communities’ aspirations for their future and vision for their land. Through this approach, the Berau Program has:

- Empowered individuals and local institutions to participate in decisions affecting local land use, natural resources, and village development;
- Secured communities’ access and rights to areas that support their livelihoods and well-being;
- Created opportunities for improved and more diverse livelihood activities.

This case study focuses on how the Conservancy is engaging communities in the program and contributing to the well-being of people living in or near Berau’s forests. The following sections examine major program approaches, challenges and promising results to date, as well as lessons relevant to the broader REDD+ community.



Morning mist in the forest of the Lesan River in Berau. © Mark Godfrey/TNC

COVER: School children gather in Long Laai village on the banks of the Sagah River in the forest of Berau district, East Kalimantan province, Indonesia. © Bridget Besaw; LEFT: Ibu Tipung stands in a nursery where local villagers grow seedlings of fast-growing hardwood species to sell timber companies for re-planting. Nehas Liah Bing, East Kutai District, East Kalimantan, Indonesia. © Nick Hall

The Indonesian Context for REDD+

Home to the world's third-largest tropical forest (after Brazil and Congo), Indonesia boasts globally outstanding biodiversity, from rhinoceros to 11 types of primates, including orangutans. As Indonesia's abundant natural resources are developed to meet global demand, its forests are being cleared at a rapid pace. Coal is mined for energy, trees are felled for timber and the furniture market, and plantations are tilled for oil palm (a biofuel and manufacturing ingredient). As a result, Indonesia is one of the world's top emitters of carbon dioxide, and more than 75% of its emissions come from deforestation and land use change. In response, President Susilo Bambang Yudhoyono made a pledge in 2009 to cut Indonesia's carbon emissions by 26 percent by 2020, and up to 41 percent with international assistance.

Berau District, Borneo

In Berau District, located in East Kalimantan province on the island of Borneo, forests still cover about 75 percent of the total 2.2 million hectares. Berau's population of around 180,000 people is spread among 13 sub-districts and 107 villages, which vary in levels of remoteness, access to markets and cultural homogeneity.

Inland from Berau's capital, Tanjung Redeb, indigenous Gaa and Punan live in villages along the Segah and Kelay rivers, in the sparsely populated parts of the district where dense forests remain. In many communities, people live in the same forests where their ancestors are buried, and their daily lives revolve around the forest. They rely on game they hunt in the forests and fish they catch in the rivers, and on non-timber forest products they collect to use or sell. Many also supplement their food supplies with subsistence farming.

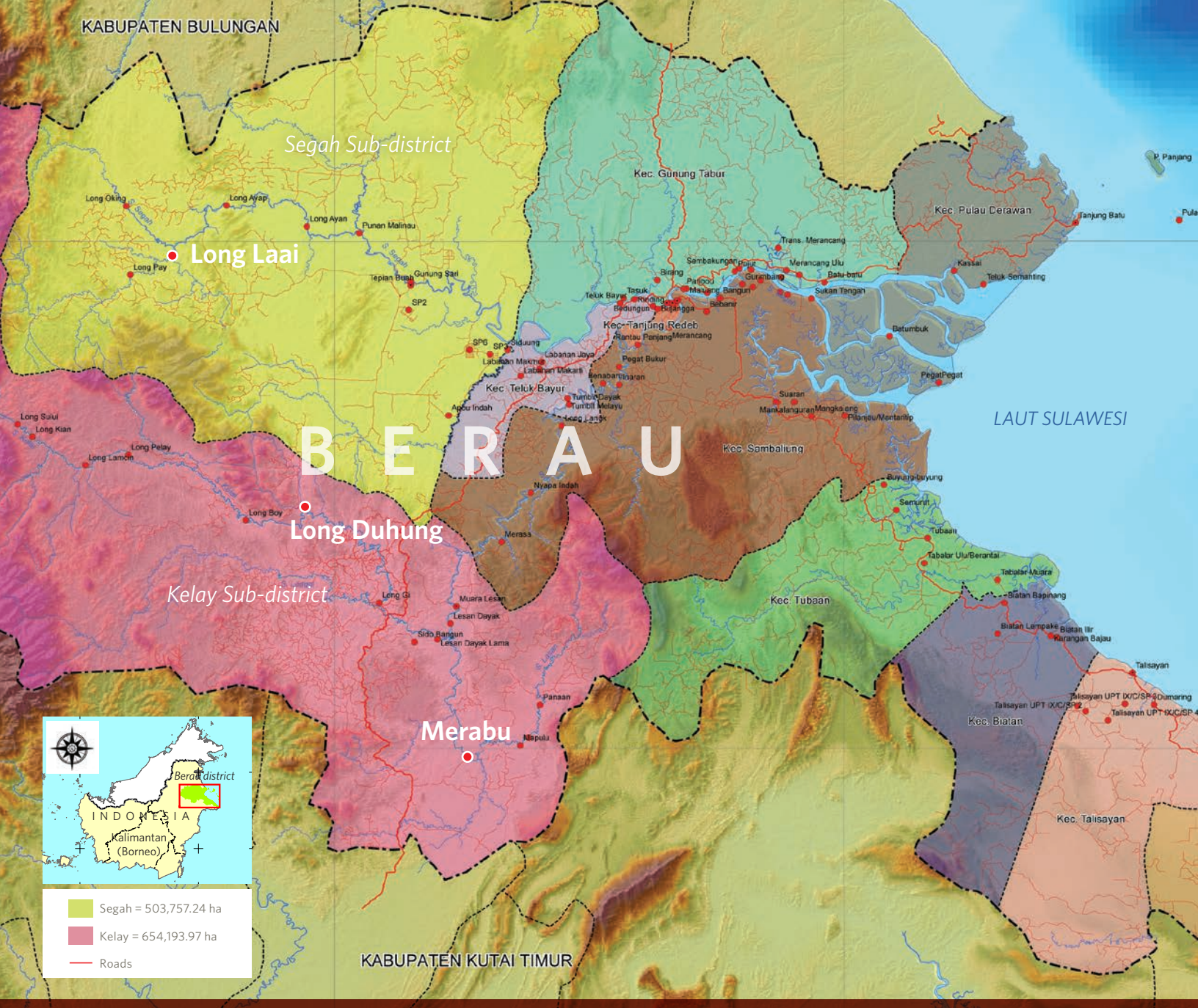
Many changes are being imposed on communities by outside forces, such as government development policies, the arrival of immigrants, or of companies with logging rights or oil palm permits. The predominant model of economic development has been based on conversion of natural forests to other land uses.

Mining (40% of GDP) and forestry (30% of GDP) dominate the district's economy. Timber concessions cover around 40 percent of Berau's total land area, and much of this is being managed by the 16 companies that hold the concessions. Additionally, plantations for oil palm and timber are gradually replacing natural forests. Some in Berau have benefited from jobs created by these changes, but many residents—especially those living in the upper watershed where the most natural forest remains—oppose development options that significantly alter their forests.

Of the 20 villages (and approximately 10,000 people living in them) that could benefit from the Berau Program, some border protected areas; others are located within or around timber concessions; while still others are in forests being considered for plantation or mining development. Few have legal tenure over the forests where they live.

Although changing land uses will have profound effects on their ways of life, members of local communities face a number of challenges that limit their ability to influence district land use planning and actively take part in forest and natural resource management:

- Frequently communities have not articulated their own long-term vision for land use, inhibiting their ability to be proactive in land use planning processes.
- The rights of communities over forests and their roles in forest management are not legally recognized, and in some cases, community land and concession areas overlap. The Ministry of Forestry in Jakarta and the district government continue to largely determine how forests will be managed.
- Support from the district government has focused on developing the village physical infrastructure, such as roads and buildings, and paid little attention to forest and natural resource management issues, nor basic services such as health and education. As a result, the communities have to bear the costs of natural resource management or rely on support from other sources.



Inland from Tanjung Redeb, the capital of Berau district, Indonesia, indigenous Gaii and Punan live in villages along the Segah and Kelay rivers, in the sparsely populated and densely forested parts of the district. The forests supply food, medicines and raw materials for building homes and boats for transportation. In many communities, people want to maintain the forests that have been such an integral part of their culture and livelihoods.

The Berau Program's Role in Improving People's Well-Being

In the future, we want to see that there is a stronger forest tenure for communities. Communities depend on forests. If communities have management rights, forests will be protected. If sources of livelihood for communities, such as irrigated paddyfields, fish ponds, livestock raising... can be created or supported then pressure on forests will be diminished.

—Jenas, of Long Duhung village, Head of Forum Kampung, an inter-village body that coordinates forest and natural resource management initiatives of six neighboring villages in the Upper Kelay Watershed.

In order to protect Berau's forests while providing economic development for its people, it is critical that communities are engaged in land use planning and management, and that they benefit from land use activities. Officially recognized rights are crucial to enable communities to participate in decisions about their local natural resources and to determine the future of the lands where they live.

The Berau Program is working with at least 20 village communities in the district, to:

Empower individuals and local institutions to participate in decisions affecting local land-use, natural resources, and village development. Specifically to:

- Develop and manage natural resources;
- Mobilize and manage financial and human resources;
- Influence natural resource use and management decisions at local and national levels;
- Gain knowledge to make informed decisions.

Enhance communities' **security**, specifically to:

- Attain formal management rights;
- Maintain their traditional relationship with forests;
- Access forest areas that overlap with timber concessions for community use;

Create material **opportunities for wealth creation** and well-being. Specifically, the Berau Program is working to:

- Increase income-generating and livelihood opportunities.
- Improve communities' access to basic services, such as schools, health services, clean drinking water, and electricity.

Multiple Pathways to Generate Benefits from REDD+

Excerpted from *Sharing the Benefits of REDD+: Lessons From the Field* by Madeira et al. 2012, which was adapted from Amartya Sen's *Attacking Poverty Framework*, World Bank 2001

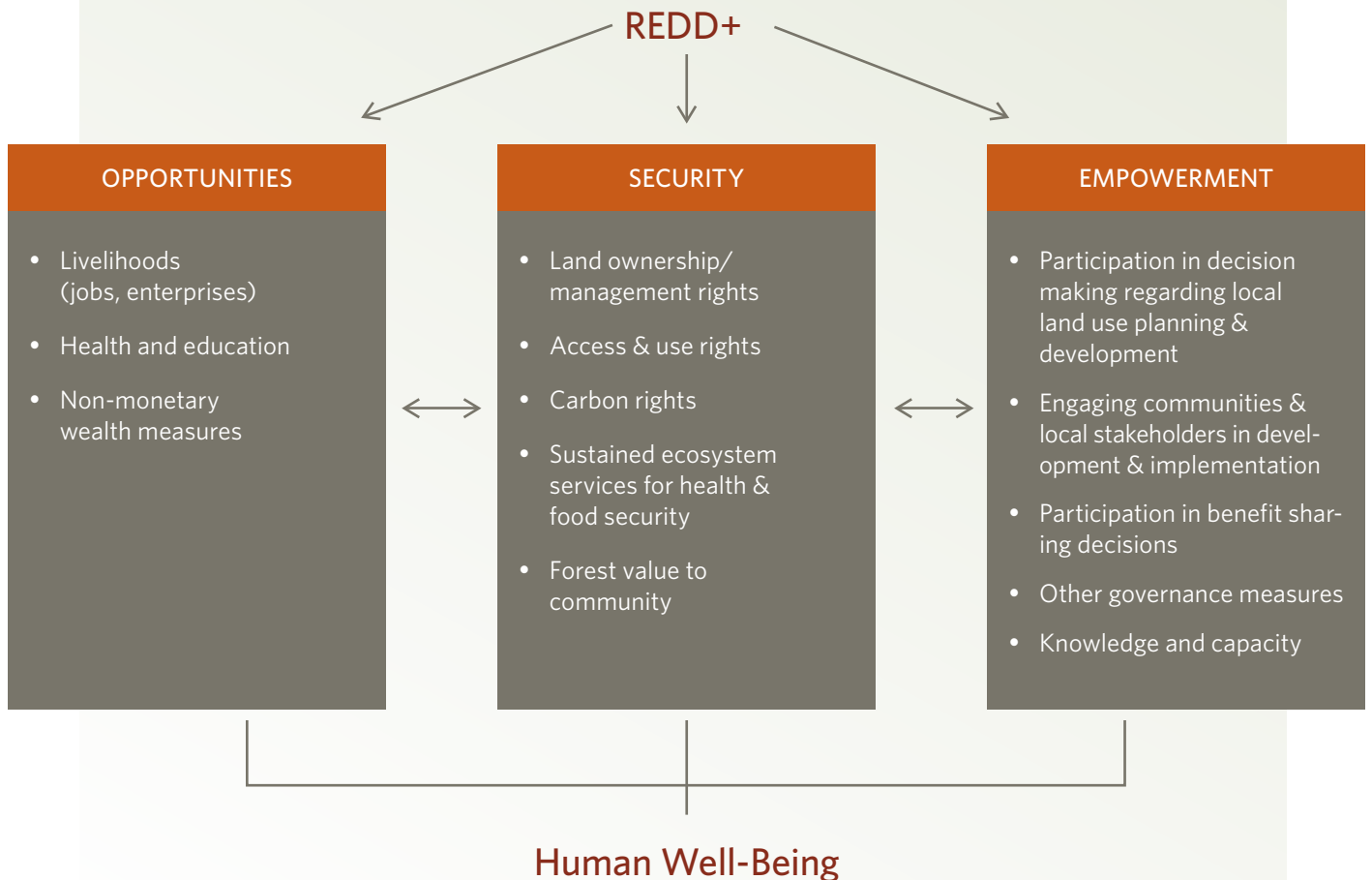
Lasting improvements in human welfare require investments in three interacting and complementary components of well-being: opportunity, security, and empowerment. In the context of REDD+, programs can contribute to these three pathways by:

1. creating material **opportunities** for wealth creation and well-being, such as jobs, revenue streams, infrastructure, and improved educational conditions;

2. enhancing populations' **security**, including tenure security, food and water security, livelihood security, and adaptability to climate change; and

3. facilitating the **empowerment** of individuals and communities to participate in decisions affecting local land use and development.

To generate sustainable development benefits, REDD+ programs should generate benefits in all three components.



The Green Growth Strategy

To be effective, REDD+ initiatives should be developed and built on local knowledge, local needs, and existing forest and natural resource management practices.

The Berau Program was launched as a partnership among the Governments of Indonesia, East Kalimantan province and Berau district, with participation and support from communities, NGOs, the private sector and universities. The Conservancy led the design of the program, building off nearly a decade of its experience in supporting forest management in the district. An innovative approach to reduce emissions from deforestation and degradation and achieve development goals, the Berau Program was declared a district-scale REDD+ pilot program in June 2009 by the Ministry of Forestry. It is the first REDD+ program in Indonesia to span an entire political jurisdiction, making it possible to address some of the drivers of land use change.

The Berau Program combines district-wide initiatives, such as improved planning, mapping, governance, and finance, with multiple site-based strategies and investments that target long-term economic growth while minimizing negative impacts on forests. These site-based strategies—designed to avoid emissions from forest clearing and other land use activities—include:

- empowering communities to participate in and benefit from natural resource management decisions;
- restoring degraded lands;
- improving the siting of oil palm plantations and operations to get more production out of less land and setting aside land that is of particularly high ecological or social value;
- implementing reduced impact logging practices;
- improving protected areas management.

Community engagement in the Berau Program is crucial to achieving program goals, both to ensure that communities will benefit from the program's implementation



Young villager spear fishing in the Sagah River near the village of Long Laai in Berau district. © Bridget Besaw

and that they are not negatively affected by it. The following sections detail the Conservancy's approaches to achieve the goals and objectives for improving human well-being. In designing and carrying out this work, The Nature Conservancy is guided by the principles of the REDD+ Social and Environmental Standards¹ including the need to obtain free, prior and informed consent (FPIC) as prescribed by the UN Declaration on the Rights of Indigenous Peoples.

¹ <http://www.redd-standards.org/>

APPROACH: An Integrated Community Engagement Framework

The Conservancy takes a community-driven approach to achieve these results. At the heart of this approach is “asset-based community development,”^{2 3 4} which views community “assets” (knowledge, capacities, institutions and experience) as the primary building blocks of sustainable community development. It emphasizes that empowered communities should be built from the inside out (not from the top down or outside in) and that significant and meaningful development can only take place when local communities are committed to investing themselves and their resources in the effort. By focusing on local assets and investment, external resources can be appropriately allocated and can therefore be more effective. The community’s vision and values drive the design of a village development plan.

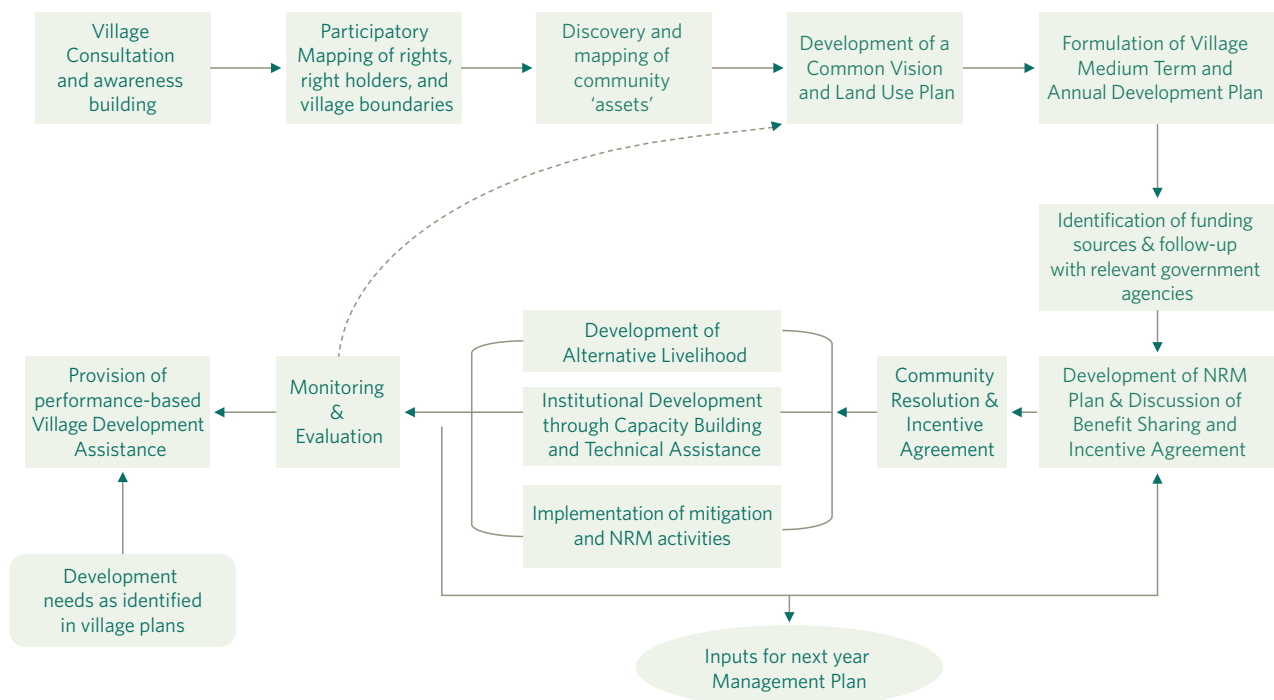


A community rubber tree nursery in Sidobangen village, Berau.
© Herlina Hartanto

Building on the foundation of asset-based community development, the Conservancy developed a practical framework for engaging communities in the Berau Program and achieving long-term low emissions development (Figure 1).

2 Kretzmann, J.P. and J.L. McKnight. 1993. Building Communities from the Inside Out: A Path Toward Finding and Mobilizing a Community’s Assets. Institute for Policy Research, Evanston, IL.
3 Fuller, T., D. Guy, and C. Pletsch. 2002. Asset Mapping: A Handbook. http://www.rwmc.uoguelph.ca/cms/documents/11/Asset_Mapping1.pdf
4 O’Leary, T., I. Burkett, and K. Braithwaite. 2011. Appreciating Assets. Carnegie UK Trust, Dunfermline.

FIGURE 1: A Framework for Community Engagement



The process illustrated in Figure 1 can be grouped into six main phases:

1. Visioning and village land use planning: The Community develops a long-term vision for their surrounding land and natural resources. Building off the histories of their settlement and resource use, the villagers identify the different strategies and activities that should take place to achieve their vision for the future. These strategies and activities are then integrated into the village medium-term and annual development plans. The village development plans have five categories: i) infrastructure/public facilities, ii) economic development, iii) capacity building, iv) natural resource management, and v) culture. These plans become the basis for determining how the Berau Program and other entities can contribute to the community's well-being.

2. Mobilizing non-REDD+ financial resources for the village development plan: Currently, there are a number of potential sources that can fund specific components of the village development plan. The district budget can fund certain infrastructure, economic development and capacity building projects. National, provincial and district government agencies have grant programs for village development, as do some private companies and NGOs. These sources are often quite specific in what they can fund, and the village development plan helps communities strategically target different sources and prepare proposals that articulate their aspirations and development needs.

3. Developing a Natural Resource Management Plan and mobilizing REDD+ funds: The Berau Program creates access to funding for natural resource management activities which normally are not supported through traditional sources of funds. These activities could include forest patrols, rehabilitation of degraded lands, management of forest areas, and strengthening community access or management rights. Similar to stimulus funds, much of the financing at this stage is invested in productive activities that support sustainable economic development while managing and protecting forests and other natural resources. Sources include the Government of Norway through a grant to The Nature Conservancy, and the "debt-for-nature swap" between the U.S. and Indonesian governments. To make use of these REDD+ funds, the communities

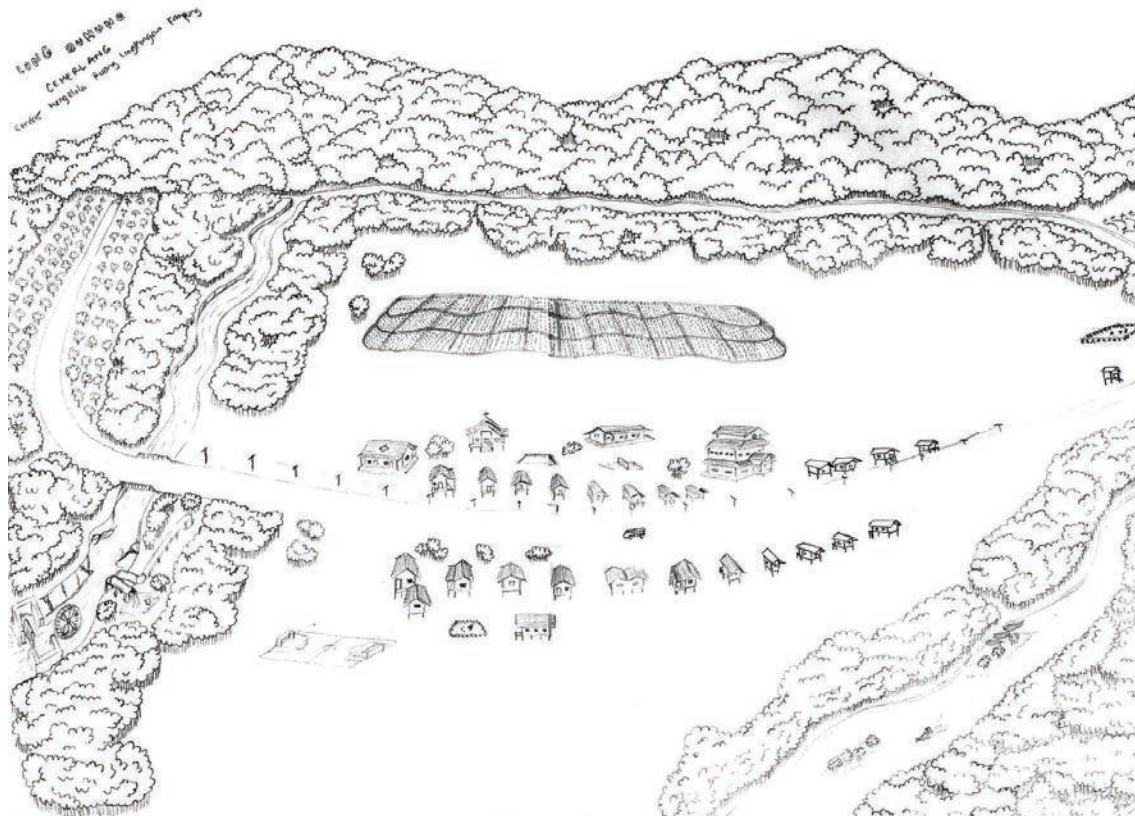
need to formulate a Natural Resource Management Plan, which lays out activities to be funded and can include i) activities to improve the conditions of the forest, ii) activities to strengthen community access or management rights, iii) livelihood activities that are consistent with forest management and protection, iv) Capacity Building and Technical Assistance to support any of these three activities. The funds are disbursed following the formalization of a community resolution and an incentive agreement.

4. Community resolution and incentive agreement: Beginning in the visioning stage, communities explore their interest in participating in the Berau Program. Communities that decide to participate in the Berau Program develop a resolution formalizing their commitment to the natural resource management activities. In formulating the incentive agreement, the village institutions and funding institutions together decide on the terms of the performance-based payments, including milestones and indicators. The community members also need to agree among themselves on how the benefits should be shared within the village, and establish a system for transparent and accountable financial management and benefit sharing. Upon the signing of the incentive agreement, communities receive initial start-up funds to begin implementing the agreed-upon activities and the first-year livelihood and capacity building activities; subsequent funds are performance-based.

Performance-based payments fall into two categories:

- » Input-based incentives: Provided annually, they are contingent on the community demonstrating that it carried out the natural resource management activities in the Natural Resource Management Plan.
- » Output-based incentives: They are awarded when certain milestones are achieved, such as a reduction in illegal logging or an increase in forest cover. These payments can be invested by communities in the priorities identified in their village development plan, such as building drinking water systems, installing micro-hydro for electricity or improving health clinics.

Long Duhung Village Vision



A drawing representing the Long Duhung community vision. © Lenny Christy

5. Implementation of natural resource management, livelihood activities, and capacity building:

Utilizing the financial resources provided when the incentive agreement was signed, the community carries out the natural resource management activities and develops livelihood projects. Capacity building and technical assistance support is provided at the appropriate time to ensure the community is able to implement these activities well.

6. Monitoring and Evaluation:

A monitoring system is developed to help communities assess their performance against the agreed-upon performance-based milestones described in the incentive agreement, and their progress in realizing their vision.



Fishing in the rivers of Berau. © Peter Ellis

APPROACH: Achieving Scale

With a total of 107 villages in Berau District, The Nature Conservancy developed this framework with the challenge of scale in mind. The Conservancy is piloting this framework in a few communities and is partnering with local NGOs, community groups, and district government agencies including the Forestry Agency, Environmental Agency, and Community Empowerment Agency to replicate this process in different places throughout Berau.

In light of the May 2013 Constitutional Court ruling that recognized the Indigenous land rights, replication can include places in which interested customary communities, that qualify under this new legal precedent, will map and delineate their territory (which may extend across villages), develop management plans, and attain formal rights to manage forest and natural resources within their customary boundaries.

Beyond the local level

This framework lays out a process that occurs mainly at the community level; however, certain challenges to community well-being cannot be solved at the local level alone. Overcoming the lack of secure land rights is particularly difficult to resolve. The Indonesian policy reform of 1999 provided a stronger legal basis for community forest rights. Since then, several models have been introduced which include social forestry (*Perhutanan Sosial*), Community Forestry (*Hutan Kemasyarakatan*), Village Forest (*Hutan Desa*), and Community Plantation (*Hutan Tanaman Rakyat*). In 2010, the Ministry of Forestry made a commitment that 500,000 hectares of state forest per year will be redesignated with formal management rights for communities.

Until now, the devolution progress has been slow, mired in complicated licensing procedures that have resulted in few communities gaining legally recognized tenure security to their forests. Based on the experience supporting communities to obtain forest management rights in Berau, the Conservancy is working simultaneously at multiple levels, through coordinated efforts with partners, to streamline the review and approval of community requests for management rights and strengthen political will at the district, provincial and national levels.



The asset-based community development approach, visioning, development of the village development plan, and mobilization of REDD+ and non-REDD+ resources **empowers** the community. Individuals and village institutions are strengthened, and communities can take a proactive role in land use planning, and managing and protecting forests.

Increased capacities and skills help communities to convey their aspirations and negotiate with more powerful stakeholders to determine how the surrounding forest and natural resources should be used and managed, and how they will continue to access resources in the future, thus contributing to increased **security** and laying the foundation for achieving formal tenure rights.

The village development plan articulates priorities for capacity building, technical assistance and productive activities—and together with financial resources mobilized from REDD+ and non-REDD+ sources—will result in **opportunities for wealth creation** and local economic development.

ABOVE: A farmer prepares a field for planting in the Kalimantan region of Borneo, Indonesia. © Bridget Besaw

EARLY RESULTS

The Conservancy has been working with three villages in Berau following the processes described above. Below we provide more details about preliminary results and lessons learned.

Through visioning and village land use planning models, villagers articulated their common goals, empowering them to take actions to secure their future.

Visioning and participatory 3-dimensional land use modeling proved to be powerful tools. Through visioning processes, a larger number of community members were able to share their visions and aspirations, discuss what is most important to them, and identify a common goal they want to achieve as a group. By building a 3D land use model together, different villagers became more aware of the land and natural resource challenges they face and could share their knowledge of the surrounding resources, such as honey trees and

caves in the surrounding area. The communities were able to communicate their needs and aspirations more effectively to outside stakeholders as the vision and the land use model were very visual and easily understood by others. They subsequently strategized the different management strategies and actively sought the financial and technical support from others in implementing those strategies.

Communities secured their access and rights to areas that support their livelihoods and well-being.

Visioning and village land use planning enabled communities to discuss current and future resource use, and clearly identify areas that should be protected. Further, communities could anticipate and prepare to respond to development activities that may affect their resources, such as oil palm plantations, mining and others. The results of visioning and village land



Village residents create a 3-D model of their village area and the surrounding environment. © Herlina Hartanto



Village traditional leader (elected by people) Wal Eh at the village of Long Okeng in Berau district. © Bridget Besaw

use planning have, in turn, enabled communities to secure their access to the surrounding land and natural resources. For example, Long Duhung residents, whose village is located inside a timber concession, have negotiated successfully with the concession and obtained access to 70 hectares of degraded lands on which they will establish small holder rubber plantations. The concession has also agreed not to log in a 1,500-hectare biodiversity-rich forest which has been used by the community for hunting and collecting of non-timber forest products such as sago and herbs. Moreover, these agreements between the timber concession and Long Duhung set a precedent that the villagers have a role in land use planning, even within a concession.

The visioning and village land use planning in Merabu (see page 13) has led the villagers to agree on the importance of protecting 10,000 hectares of dense and biodiversity-rich forests. By working simultaneously

with the Merabu villagers, the Berau government and the Ministry of Forestry, the Conservancy helped facilitate the district's approval of Merabu's request to gain formal management rights.

Community engagement in land use planning improved village government administration. Better functioning village government resulted in more effective resource mobilization.

With support from the Conservancy in formulating strategic and annual village development plans, the village governments were able to engage broader participation from villagers to create and prioritize development plans and programs. Because their views and opinions were valued, community members became more supportive of the village government's programs and activities. Facilitation and technical support from the Conservancy enabled village governments to produce high-quality village documents, data, and maps that proved useful in communicating their development needs to district, provincial, and national government. Village governments and community groups were able to secure financial resources that they were not able to tap before. In two villages, an additional fund of approximately US\$12,000/village was secured as a result. This was substantial considering that the village only received an annual development fund of US\$15,000/year.

Increased capacity and enhanced livelihood opportunities have improved well-being.

Using the financial resources they secured, the villagers are developing new livelihood projects that have increased their income. A rubber farmer group has successfully developed a rubber nursery, generated a total income of US\$13,000 from selling the produced budwood grafts and seedlings, and shared their skills and experiences with other villages within and outside Berau. Several members of a community group, who purchased 135 chickens as a part of their poultry farming initiative, have generated income from the sale of chickens. Some have given several newborn chicks to other villagers to raise. Training in bee farming has also been given to several community members who have experience in collecting and selling honey from the forests. Bee farming has been initiated by several community members and it is expected that they could generate increased income from the sale of honey in the near future.



ABOVE LEFT: Paintings on the walls of Merabu's caves are of archaeological significance. © Herlina Hatanto; ABOVE RIGHT: Residents of Merabu village developed a community vision. © Herlina Hartanto

MERABU MAY BE FIRST “VILLAGE FOREST” IN DISTRICT

Deep within Berau's interior, furthest from the coastal city of Tanjung Redeb, the people of the village of Merabu in the Kelay watershed use the forest for hunting and collecting timber, fruits, honey and rattan. The forest supplies clean water to support their lives, as well as nest sites for orangutans, which have moved from surrounding areas cleared for oil palm.

Merabu is located in a karst, or limestone bedrock landscape within Berau and East Kutai Timur districts. Pegunungan Menyapa Protection Forest which extends into Merabu Village, is one of a few small areas given protection status in this karst ecosystem. The limestone caves have been a source of livelihoods for young men of the village, who generate income as cave climbers, harvesting bird's nests to be sold on the international market as the main ingredient for the delicacy “bird's nest soup.” This way of life is threatened by mining interests that would like to extract coal from within the village boundaries.

A close-knit community of 235 people in 53 households, mostly of Dayak Lebo descent, the residents of Merabu have stated their interest to enroll in the Ministry of Forests' Village Forest (*Hutan Desa*) program, which would strengthen their rights to manage and make land use decisions for their forests.

The Nature Conservancy shared information about the Berau Forest Carbon Program, and subsequently facilitated a process of developing a common vision and a three dimensional land use model. Using these

tools, village residents reached consensus on land and forest use allocation and identification of important areas to be protected. The Conservancy also supported the village government in conducting a survey of households about livelihoods and formulating medium-term and annual village development plans. In managing the surrounding forest and natural resources, the community committed to the following emissions reduction activities:

- Limit slash-and-burn or swidden agriculture to former plots.
- Manage around 10,000 hectares of protection forest as a part of the Ministry of Forest's Village Forest (*Hutan Desa*) program.
- Patrol and rehabilitate degraded areas within the *Hutan Desa*.
- Survey and protect caves inside the *Hutan Desa*, some of which are of high archaeological importance, with unique handprint patterns.

The Conservancy also worked with Merabu to support their application for *Hutan Desa* designation. At publication, they had received district approval—one of the most important, and challenging, milestones to achieving *Hutan Desa* designation. Merabu would be the first community in Berau District, and among the few communities in East Kalimantan province, to obtain a 35-year forest management right, thereby preventing forest conversion for coal mining inside 10,000 hectares of protection forest.



School children at Long Laai village on the Segah River in Berau. © Bridget Besaw

LESSONS LEARNED

REDD+ initiatives need to be tailored to local priorities and grounded in local forest management practices.

To be effective, REDD+ initiatives should be developed and built on local knowledge, local needs, and existing forest and natural resource management practices. Often strengthening the forest management practices of the local communities can help achieve REDD+ goals. Sufficient attention and resources must be invested in understanding local priorities and land uses. The Nature Conservancy developed the Integrated Community Engagement Framework as a practical process for developing REDD+ initiatives that are tailored to local interests and priorities.

REDD+ initiatives must advance the local development agenda, which requires working beyond the forestry sector.

Economic and social development pressure is driving much deforestation and degradation. REDD+ initiatives must contribute to growth and development goals while reducing impacts on forests. Often local development priorities include access to health resources, agricultural extension support, education, clean water, electricity, waste management, and other needs beyond the forestry realm. REDD+ initiatives must be integrated into official development processes so that implementation can sufficiently address the multidimensional lives and needs of the local communities.



ABOVE LEFT: A hand print from cave paintings in Merabu village. © Herlina Hartanto; ABOVE RIGHT: Villager Bong Yang weaving a basket at the village of Long Okeng in Berau. © Bridget Besaw

Engaging government at multiple levels and influencing policy-making is crucial.

Villages have little power to advance their own interests in land use, and current district spatial planning processes in Indonesia do not take into consideration the villages' land use practices and plans. For example, timber companies do not have to provide long-term access to the communities within or abutting the concession area. Further, despite the Ministry of Forestry's goal to grant management rights to villages for Village Forests, long procedures including the need for numerous levels of endorsement has resulted in only a small number of communities receiving these rights. Notably, the district government needs to support a village's request for forest management rights, and may have little interest to do so. It is only through working with local villages to advance their interests and simultaneously at intermediate and national levels with other stakeholders that these challenges can be overcome and policies can be improved.

There is broad opportunity for REDD+ initiatives to benefit local communities through early programmatic investments in productive activities, improving security and empowering individuals and local institutions.


Despite uncertainty about international carbon markets, public sector investments in developing and implementing REDD+ initiatives can generate concrete benefits for local communities. The Berau Program is using bilateral and multilateral funds to integrate REDD+ into the village development processes as a part of its community engagement strategy. As a result, communities have more secure access to land and resources, are empowered to participate in land-use decisions, and are developing "green" enterprises that will be economically and environmentally sustainable. These benefits are likely to endure regardless of how carbon markets evolve in the future.



Farmers prepare field for planting at a village in Kalimantan region of Borneo, Indonesia. © Bridget Besaw

The Berau Program has established a solid framework for strengthening the voices and the abilities of community members to advocate on behalf of their own interests and determine their own futures. Building on the strong relationships established with participating communities and government partners, the Berau Program is ensuring these early years of program implementation contribute to improved well-being for people living in and near the forests. To achieve results at scale, the Conservancy is working with government and non-government partners in Berau District, East Kalimantan Province, at the federal level and internationally, to advance policies and to promote best practices and promising approaches that will deliver real benefits to people while achieving forest conservation and climate protection goals.

RIGHT: Villagers from Long Laai navigate rapids on the Segah River in Berau district. © Bridget Besaw; BACK COVER: Segah River as seen from Long Laai, a Dayak village in the Sumalindo IV logging concession, in Berau. © Bob Lalasz/TNC

A photograph showing a person in a light blue boat on a river. The person in the foreground is wearing a large, colorful, patterned hat and an orange garment. The boat is moving through white water rapids. In the background, another person is visible in a similar boat, also wearing a colorful hat. The river is surrounded by dense green forest.

“The communities prefer forests remain forested into the future. Forests are the place where communities get their resources; they serve like supermarkets or banks for communities.”

—Jenas of Long Pay village



This report was made possible by the generous support of the Government of Norway.

We are also grateful for additional support for work with communities in Berau, Indonesia from Arcus Foundation and Xerox Corporation.

For more information, contact:

Erin Myers Madeira • Forest and Climate Team • The Nature Conservancy • Arlington, Virginia, USA • emadeira@tnc.org
Herlina Hartanto • Indonesia Forest Program • The Nature Conservancy • Jakarta, Indonesia • hhartanto@tnc.org

