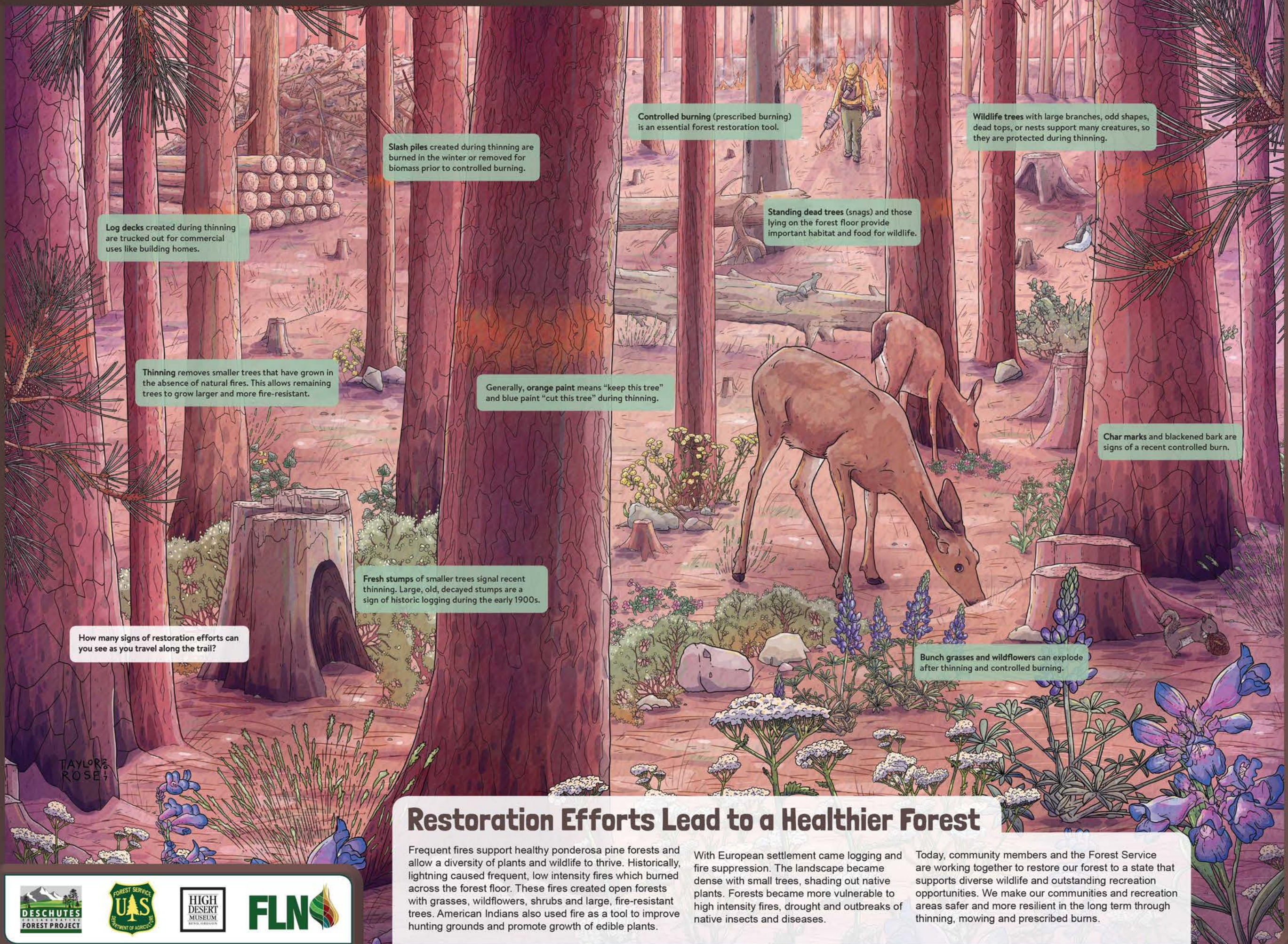


# A FOREST THAT NEEDS FIRE



Log decks created during thinning are trucked out for commercial uses like building homes.

Thinning removes smaller trees that have grown in the absence of natural fires. This allows remaining trees to grow larger and more fire-resistant.

Slash piles created during thinning are burned in the winter or removed for biomass prior to controlled burning.

Generally, orange paint means "keep this tree" and blue paint "cut this tree" during thinning.

Fresh stumps of smaller trees signal recent thinning. Large, old, decayed stumps are a sign of historic logging during the early 1900s.

How many signs of restoration efforts can you see as you travel along the trail?

Controlled burning (prescribed burning) is an essential forest restoration tool.

Standing dead trees (snags) and those lying on the forest floor provide important habitat and food for wildlife.

Wildlife trees with large branches, odd shapes, dead tops, or nests support many creatures, so they are protected during thinning.

Char marks and blackened bark are signs of a recent controlled burn.

Bunch grasses and wildflowers can explode after thinning and controlled burning.

## Restoration Efforts Lead to a Healthier Forest

Frequent fires support healthy ponderosa pine forests and allow a diversity of plants and wildlife to thrive. Historically, lightning caused frequent, low intensity fires which burned across the forest floor. These fires created open forests with grasses, wildflowers, shrubs and large, fire-resistant trees. American Indians also used fire as a tool to improve hunting grounds and promote growth of edible plants.

With European settlement came logging and fire suppression. The landscape became dense with small trees, shading out native plants. Forests became more vulnerable to high intensity fires, drought and outbreaks of native insects and diseases.

Today, community members and the Forest Service are working together to restore our forest to a state that supports diverse wildlife and outstanding recreation opportunities. We make our communities and recreation areas safer and more resilient in the long term through thinning, mowing and prescribed burns.

