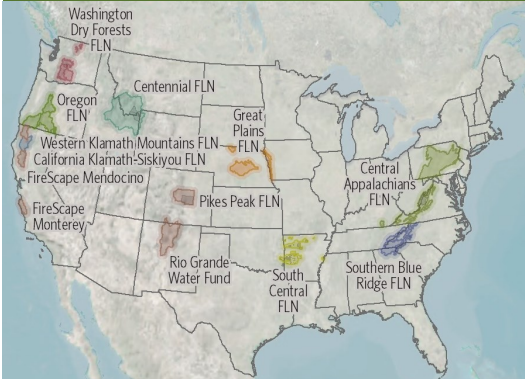


SOUTHERN BLUE RIDGE FIRE LEARNING NETWORK



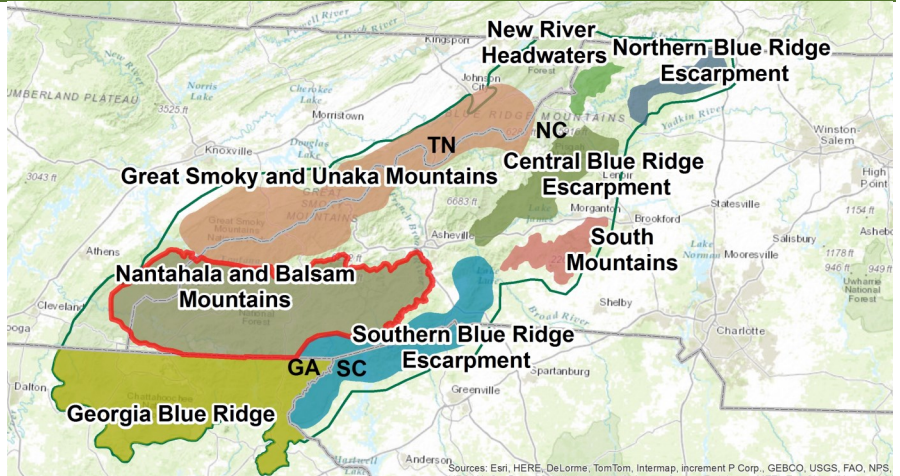
Regional Fire Learning Networks

BALSAM AND NANTAHALA MOUNTAINS

Vast areas of wilderness in the mountains of southwestern North Carolina make up this landscape which, at over 1.7 million acres, is the largest and arguably the most diverse landscape in the network. A wide range of fire-adapted ecosystems occur at elevation ranging from 1,000 to 6,500 feet. Unique to this landscape is a rare fire dependent woodland that occurs over serpentine rock. This area alone supports over twenty-two rare plant species and four rare butterfly species. Data from [monitoring plots](#) are collected at several sites in this landscape to research the effects of fire after multiple burns.

LANDSCAPE ACCOMPLISHMENTS

- ▶ Completed Ecozone mapping for the entire landscape which is currently under review.
- ▶ Engaged Eastern Band of Cherokee Indians (EBCI) as partner.
- ▶ Actively involved in fire-effects monitoring and presented results of [Monitoring Plots](#) at two conferences.
- ▶ Expanding landscape partners through engagement.
- ▶ Trained college students and landtrust staff in burning.



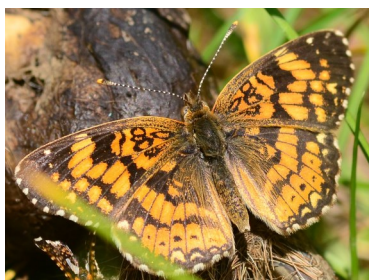
Landscapes of the Southern Blue Ridge Fire Learning Network

NETWORK PRIORITIES

- Build Capacity for large-scale, cross-boundary treatments.
- Integrate social and ecological function of fire on landscapes.
- Inspire Fire Adapted human Communities in additional landscapes.



Serpentine Woodlands after fire. The rare endemic *Packeria serpenticola* is flowering.



The Gorgone Checkerspot (*Chlosyne gorgone*) occupies only two locations in North Carolina, one is the Serpentine Woodlands found here.

LANDSCAPE GOALS

- ▶ Improve knowledge of smoke modeling and management.
- ▶ Explore how EBCI can help build capacity across the network through collaborative burns and training exercises.
- ▶ Look for opportunities to promote shortleaf pine restoration.
- ▶ Engage researchers and scientists to determine the appropriate use of fire in bat habitat.
- ▶ Refine burn priorities based on [Ecomath](#) analysis

LANDSCAPE PARTNERS

Alcoa Power Generating, Inc.
 Eastern Band of the Cherokee Indians (EBCI)
 Land Trust for the Little Tennessee
 North Carolina Division of Forest Resources
 North Carolina Wildlife Resources Commission
 The Nature Conservancy—North Carolina
 USDA FS—National Forests of North Carolina (Nantahala Ranger District)
 USDA FS—Southern Research Station
 Western Carolina University

LANDSCAPE LEADS

Peter Bates, WCU
 828-227-3914, bates@email.wcu.edu
Gary Kaufman, USFS
 828-257-4861, gkauffman@fs.fed.us



The Nature Conservancy
 Protecting nature. Preserving life.