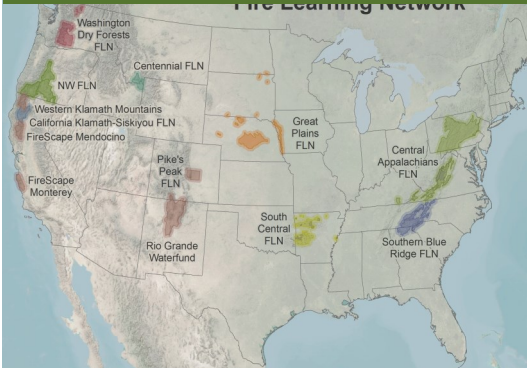


SOUTHERN BLUE RIDGE FIRE LEARNING NETWORK



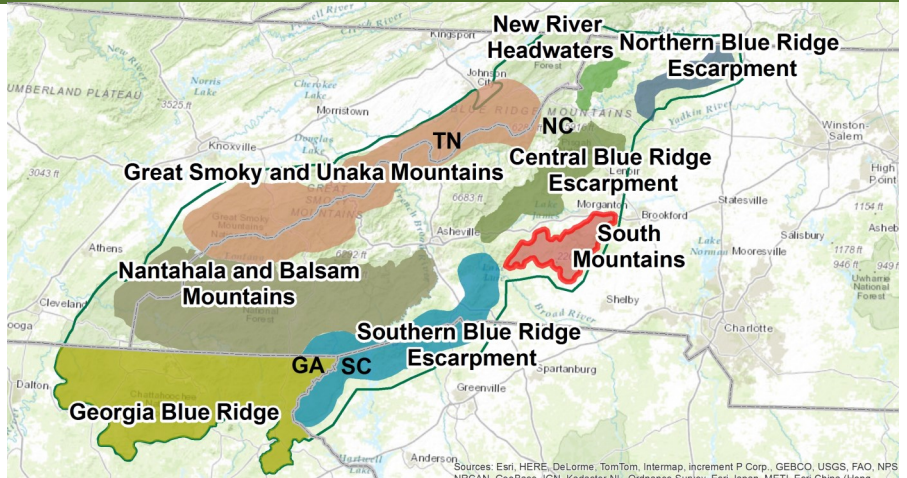
Regional Fire Learning Networks

SOUTH MOUNTAINS

The South Mountains Landscape is an isolated mountain range that lies between the rolling hills of the Piedmont region and the steep slopes of the Southern Blue Ridge escarpment. Steep topography and elevations ranging from 1,000 to 3,000 feet support ecosystems typical of the Southern Blue Ridge region. Exposed rocky ridges and dry upper slopes at lower elevations support Pine-Oak forests dominated by Shortleaf Pine (*Pinus echinata*). These forests depend on fire to maintain healthy structure and function. Partners have been working to restore these uncommon forests.

LANDSCAPE ACCOMPLISHMENTS

- ▶ Implemented a multi-steakholder, cross-boundary burns on 2,770 acres.
- ▶ Building capacity through engagement:
 - Young Offenders Forest Conservation Program (BRIDGE)
 - The Southern Blue Ridge Fire Crew
- ▶ Educate and inspire with public news releases that explain the social and ecological function of fire.



Landscapes of the Southern Blue Ridge Fire Learning Network

NETWORK PRIORITIES

- Build Capacity for large-scale, cross-boundary treatments.
- Integrate social and ecological function of fire on landscapes.
- Inspire Fire Adapted human Communities in additional landscapes.



The endangered White Irisette (*Sisyrinchium dichotomum*) depends on fire and is endemic to the South Mountains area.



Restoring fire to the South Mountains protects public safety and improve ecosystem health.

LANDSCAPE GOALS

- ▶ Return fire to the landscape to reduce fuel loads and protect public safety while improving ecosystem health.
- ▶ Build capacity to maintain shortleaf pine-oak ecosystems and enhance rare species habitat.
- ▶ Build social and ecological-resilience by improving partner engagement.
- ▶ Continue to educate local communities and evaluate the potential to build a Fire Adapted Community (FAC Net) group.

LANDSCAPE PARTNERS

North Carolina Division of Parks and Recreation
 North Carolina Forest Service—Youth Offenders Forest Conservation Program (BRIDGE)
 North Carolina Natural Heritage Program
 North Carolina Wildlife Resources Commission—South Mountains Game Lands
 The Nature Conservancy—North Carolina

LANDSCAPE LEADS

Marshall Ellis, NC DPR
 704-528-6514, marshall.ellis@ncdenr.gov
Dean M. Simon, NC WRC
 828-433-7277, dean.simon@ncwildlife.org

