



RCPP Tutorial – One Field
Great Lakes Watershed Management System
www.iwr.msu.edu/glwms

1. Login/Create an account
2. Locate field of interest
3. Complete RCPP Wizard
4. Generate Report
5. Update Practice Info

STEP 1a: Create an Account

Creating a GLWMS account allows you to save all the scenarios you run in the GLWMS and view or edit them at a later time. Reports can also be generated for your saved scenarios.

- Select **Login** at the top right of the page. Navigate to ‘Create New Login’ in the popup window that appears. Fill out the form with the requested information.
- Use the following naming convention for your username: First initial, last name, abbreviated organization code.
 - o The Anderson (AND); Brown Milling (BM); Cooperative Elevator Company (CEC); Helena Chemical Company (HCC); Michigan Sugar (MS); County level NRCS (NRCS); Star of the West (SOW); Wilbur Ellis (WE). Example: JDoeNRCS
- Note that your password must be at least six characters long and include at least one letter and one number.
- Press ‘Submit’. Green text will appear indicating you have successfully created an account.

STEP 1b: Login to your Account

- From the homepage, select Saginaw Bay Watershed Conservation Partnership under Customized Views. From the map menu, select **Login** and login to your account.

STEP 2: Locate Field of Interest

- Select **Switch Basemap** on the map and then choose Imagery with Labels.
- Pan and zoom directly on the map to locate a field. Alternatively, locate a field by entering an address or intersection into the map’s search bar.
- Access **Map Layers** > General Layers > Eligible RCPP Watersheds if needed (Fig 1).

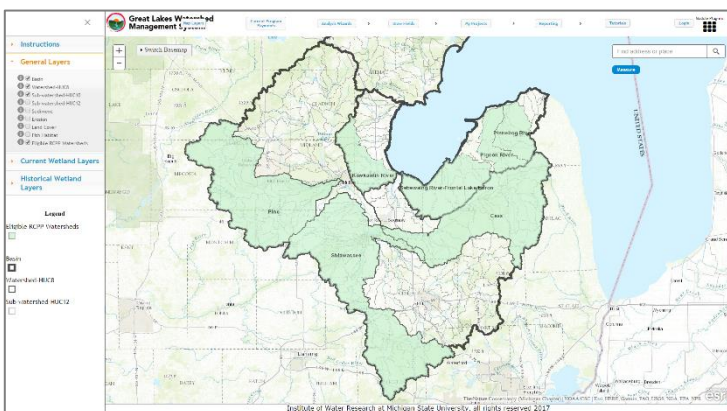


Fig 1: Eligible RCPP Watersheds Layer

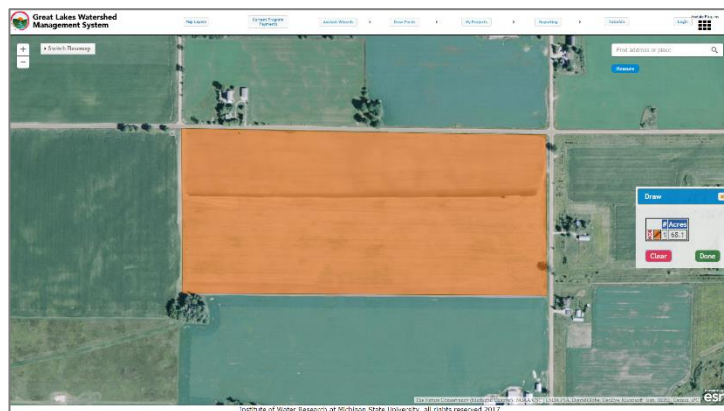


Fig 2: Field Boundary Drawn Using RCPP Wizard

STEP 3: Use RCPP Wizard to Complete RCPP Pre-Screening and Scoring

- Select **Analysis Wizards** > RCPP Wizard. To start your evaluation, click Begin.
- You will be prompted to draw boundaries for your field of interest. Select Draw and click around the field's boundaries. Double-click to complete your drawing (Fig 2). Select Done to return to the RCPP Wizard. If you make a mistake while drawing, select Clear and restart.
- The system will verify that the field is within an eligible RCPP watershed. Click Continue. Next, provide information about how you were referred to the RCPP program. Click Continue.
- Now you are ready to specify the current land use or management of the field. Select the option that best represents the field. Then specify one or more RCPP eligible practices to simulate. Note: clicking Select All will include all practices, even those that may not span an entire field (e.g., filter strip). When finished, click Run.
- The system will return results shortly for the RCPP Pre-Screening (Fig 3). If the field is a Low priority, do not continue with the evaluation. If the field is a Medium or High Priority, select View RCPP Scores and Payment to review final results for the field (Fig 4). Note: If you selected a practice that is not typically applied on an entire field (e.g., Filter Strip), the payment for that practice will be overestimated.
- Click Save. The system will automatically add "RCPP" to your save name. Specify an evaluation name - we recommend including a reference to the practices that were simulated (e.g., No Till, Cover Crop, All Practices). Specify a project name - we recommend including the farm, tract and field number associated with the field.

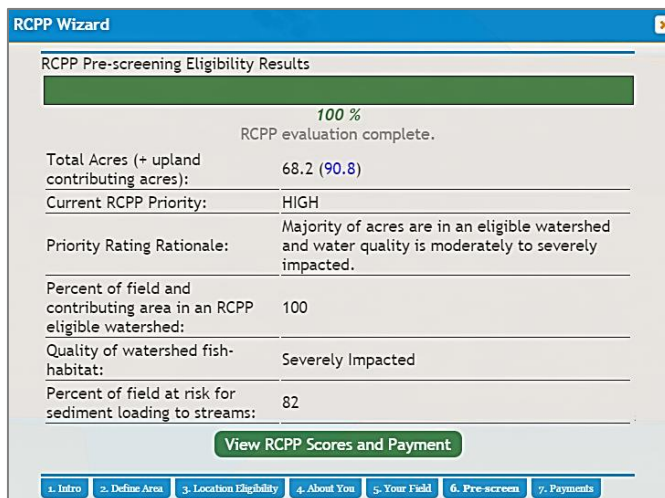


Fig 3: Pre-Screening Results

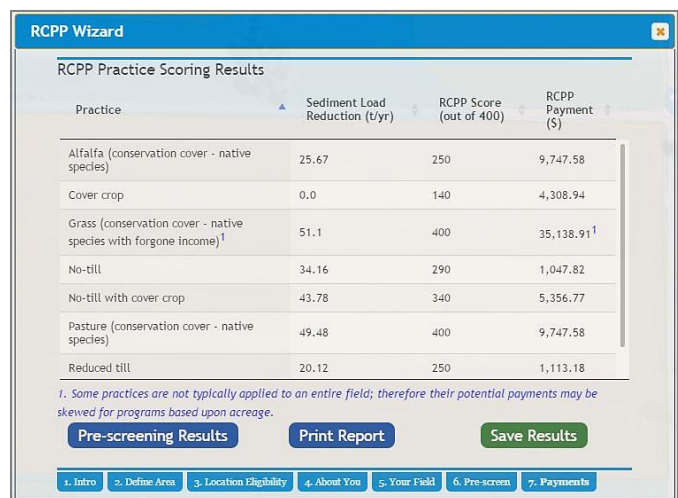


Fig 4: RCPP Scoring and Estimated Payment


STEP 4: Generate Detailed Report

- Click on the Print Report button within the RCPP Wizard. Add any additional information you feel is relevant in the input fields, then click Submit Detailed Report Request.
- The system will email results to the email listed for your account. This process may take 5-10 minutes to complete. Look for an email from iwr@msu.edu with subject line: GLWMS RCPP Report. Open the email and click the link to open the report. Save the PDF to your computer and print the report.
- The first page of the report summarizes location and acreage information for your evaluation. It also summarizes changes in erosion and sediment based upon the selected RCPP practices. Finally, it reports pre-screening and RCPP scoring results. The second page of the report contains a breakdown of each field and their associated

information. The remaining page of the report includes a map for each field within your evaluation.

- Send the report to your local District Conservationist. Return to the GLWMS and close out of any open windows.
-

STEP 5: Update Practice Information

- Any practices that are eventually contracted through the RCPP must be marked as installed within the GLWMS. Select [My Projects](#) > View Uninstalled Practices.
- Find the evaluation you just conducted and select .
- Mark this simulation as installed under the Saginaw Bay Watershed (SBW) RCPP. Provide installation and contract end-dates and save.

Does this simulation refer to a currently installed BMP or land cover change?	<input type="radio"/> No (hypothetical) <input checked="" type="radio"/> Yes
Part of conservation program?	SBW RCPP