

The Nature
Conservancy



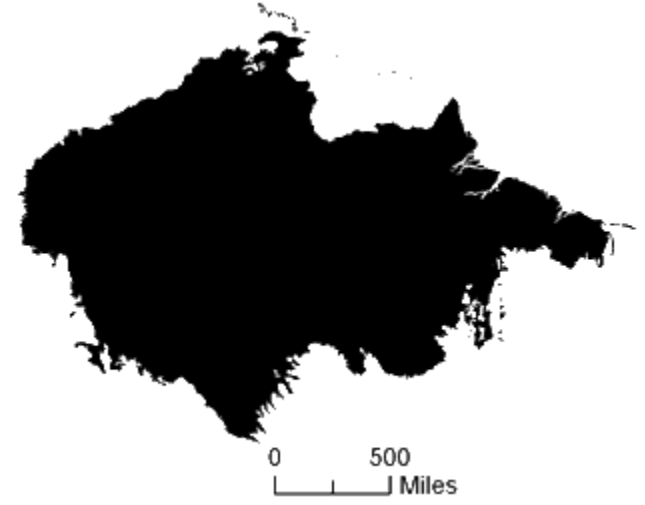
Proteger a natureza é preservar a vida.

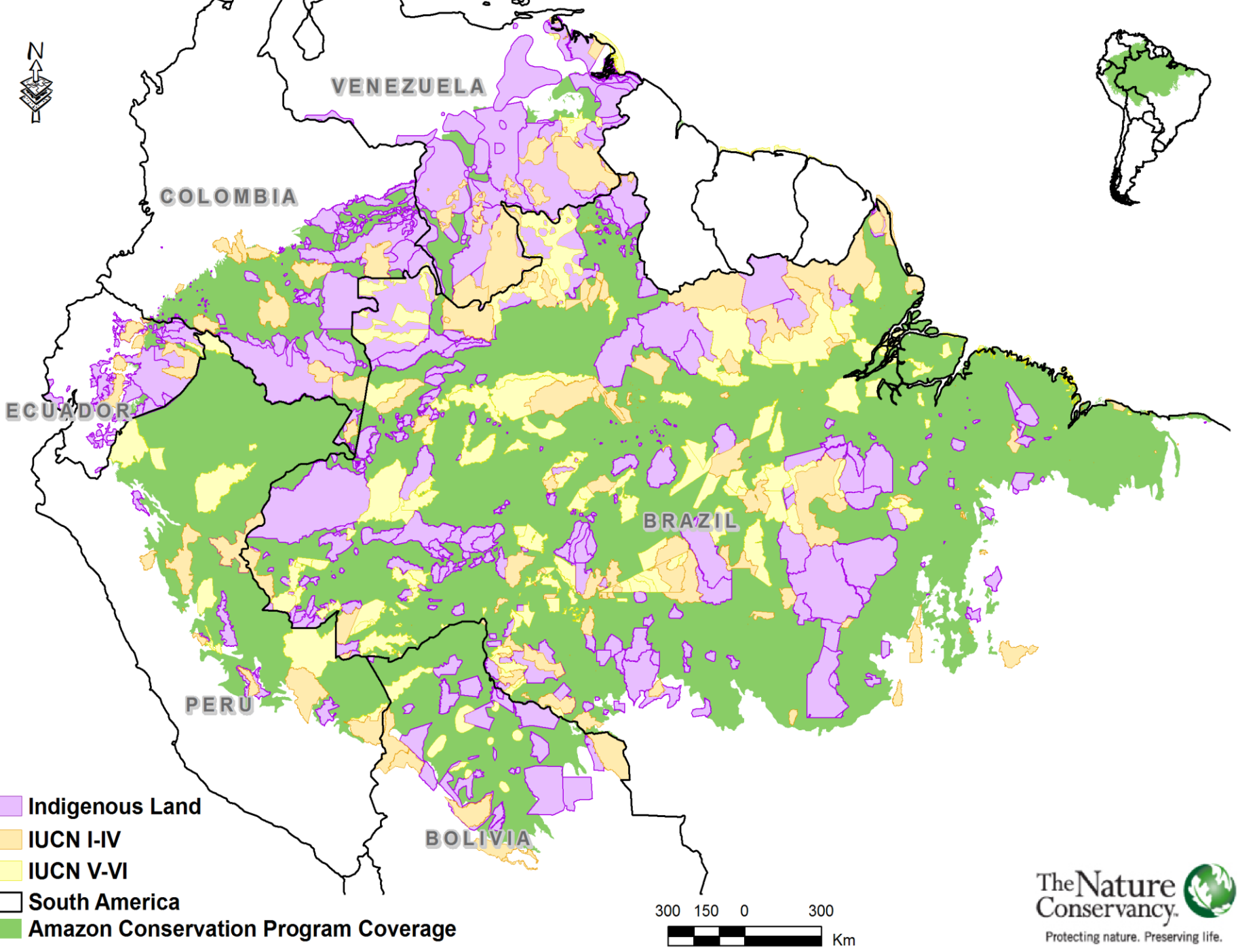
Amazon Native Lands: from local action to national policies, participation at the core

Marcio Sztutman
Amazon Conservation Manager - TNC
Merida, Mexico, May 7th 2013



The Amazon Basin





Amazonian Indigenous Lands

22 percent of the Amazon Basin (4 times size of Germany)

Connect protected areas forming extensive mosaics

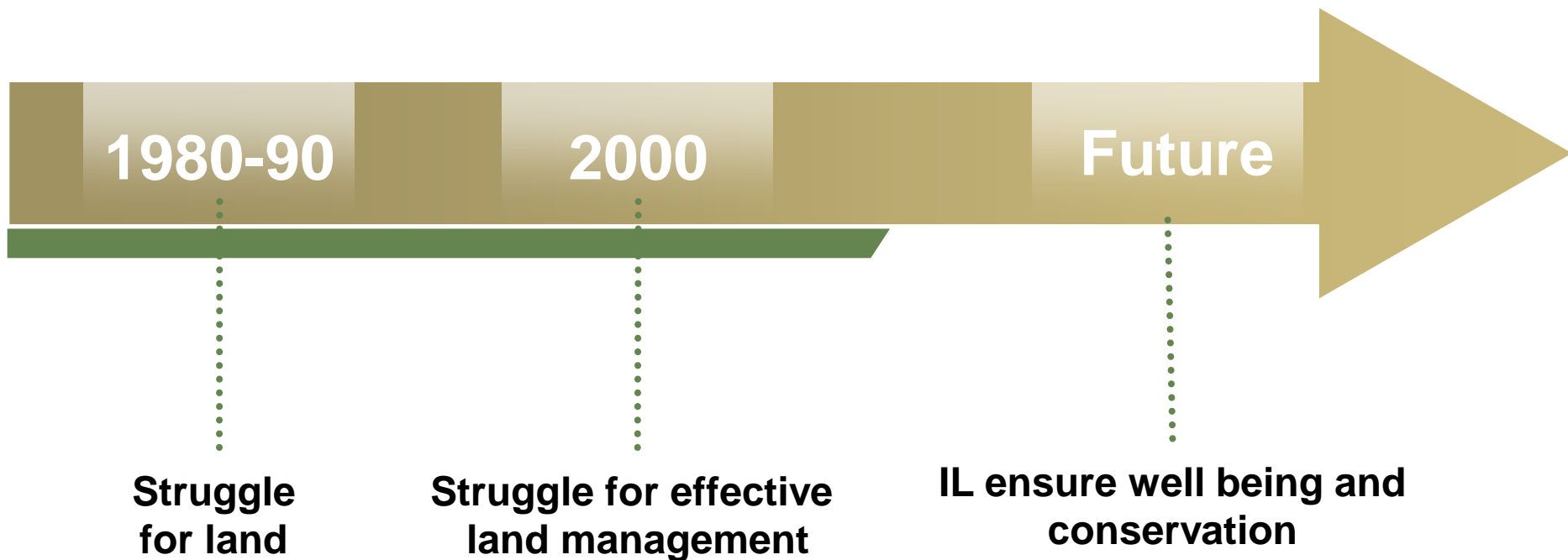
More than 300 groups, some of whom have had little or no contact with the outside world

Holders of *huge* Carbon stock



Indigenous Lands System

- Indigenous lands were recently legally created
- No corresponding formal management tools created
- Facing fast socio-environmental changes



International Funds for the Environment and Biodiversity (US\$ M) – 2000 data

| Funder | Total Funds | Indigenous portion | % |
|---------------|--------------------|---------------------------|--------------|
| PPG7 | 340 | 28 | 8,20% |
| GEF | 122,5 | 0 | 0% |
| BIRD/KfW | 127,1 | 0 | 0% |
| Total | 589,6 | 28 | 4,70% |

Threats



A photograph of a rural village with several huts featuring thick thatched roofs. The huts are situated on a slight rise, with a river or stream flowing through the foreground. The background is filled with dense, lush green tropical forest. The scene is captured in bright daylight, with some light flare in the upper left corner. Large green leaves are visible in the foreground, partially obscuring the view.

Pilot sites

Adequate public policies and sustainable finance

Indigenous capacity building

Pilot sites: *how??*

LIFE PLANS





REFLEXIONANDO JUNTOS



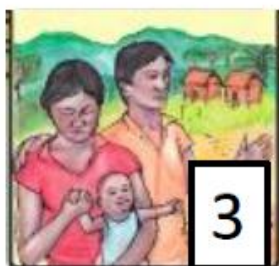
TOMANDO EL FUTURO EN NUESTRAS MANOS



NUEVA SAPOSOA HOY



NUESTROS VÍNCULOS CON LA ZONA RESERVADA SIERRA DEL DIVISOR Y ACUERDOS COMUNES

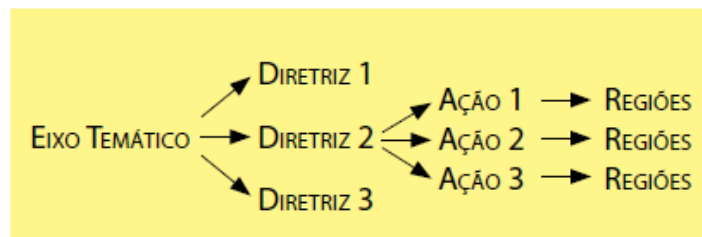


NUESTRAS FORTALEZAS Y RETOS



NUESTRAS PRIORIDADES

Life Plan Structure



Mapa de fluxo de informações

EIXOS TEMÁTICOS

SAÚDE

EDUCAÇÃO

PRODUÇÃO E OUTRAS ATIVIDADES

TERRITÓRIO E MEIO AMBIENTE

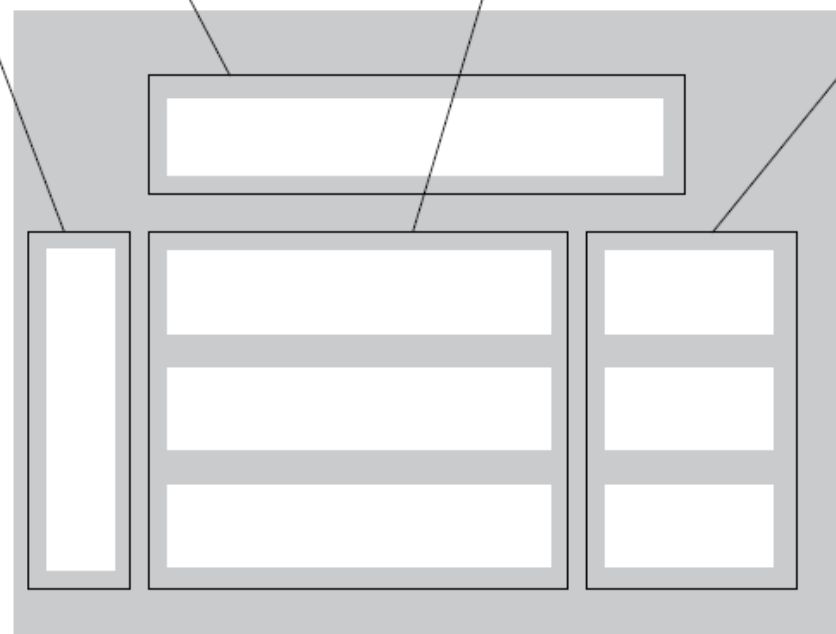
CULTURA

MOVIMENTO INDÍGENA

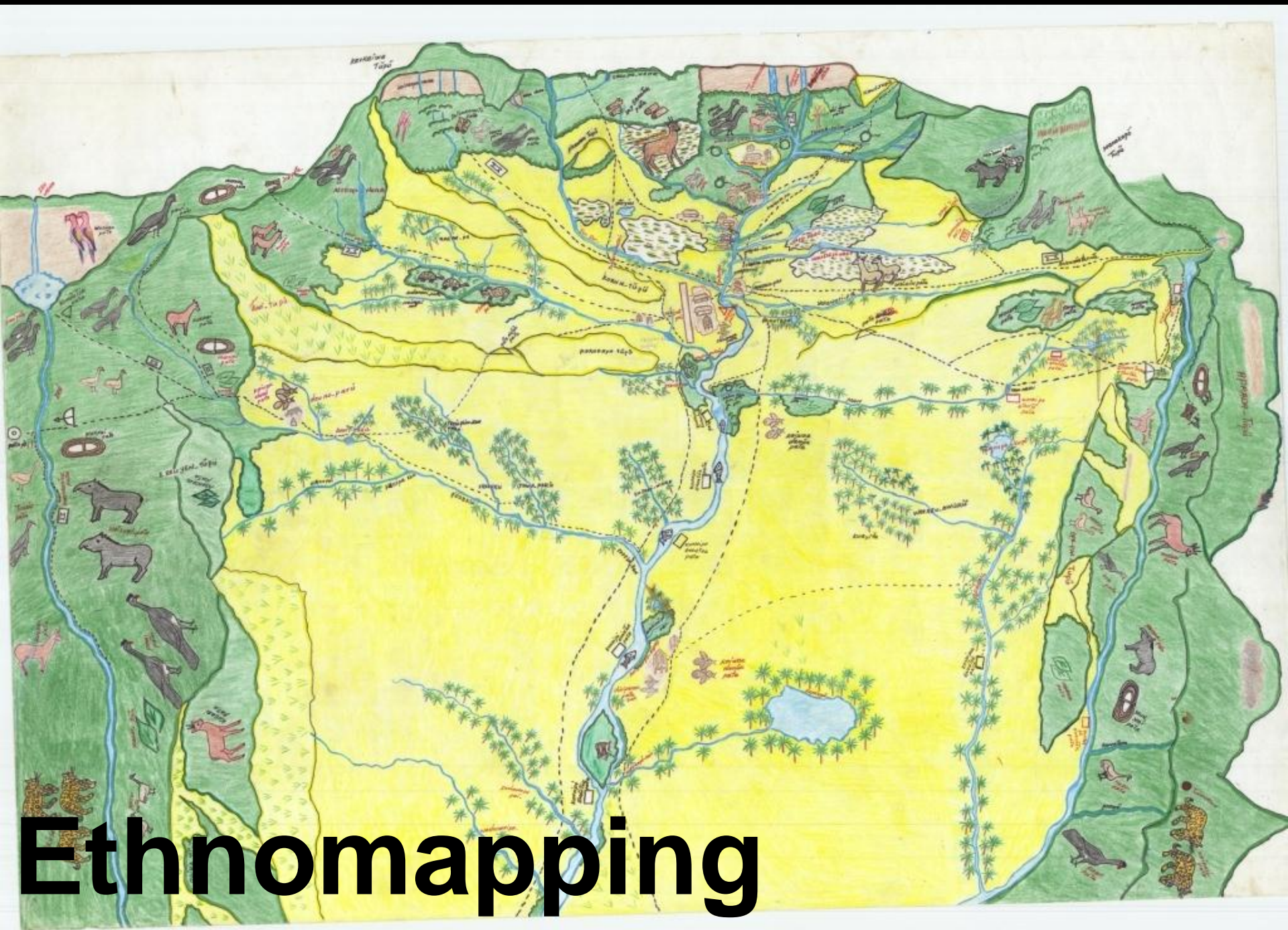
DIRETRIZ

AÇÕES

REGIÕES

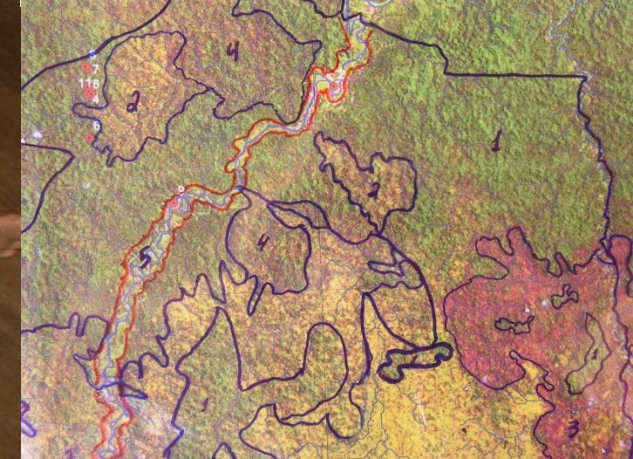


Modelo de página



Ethnomapping

Satellite Imageries



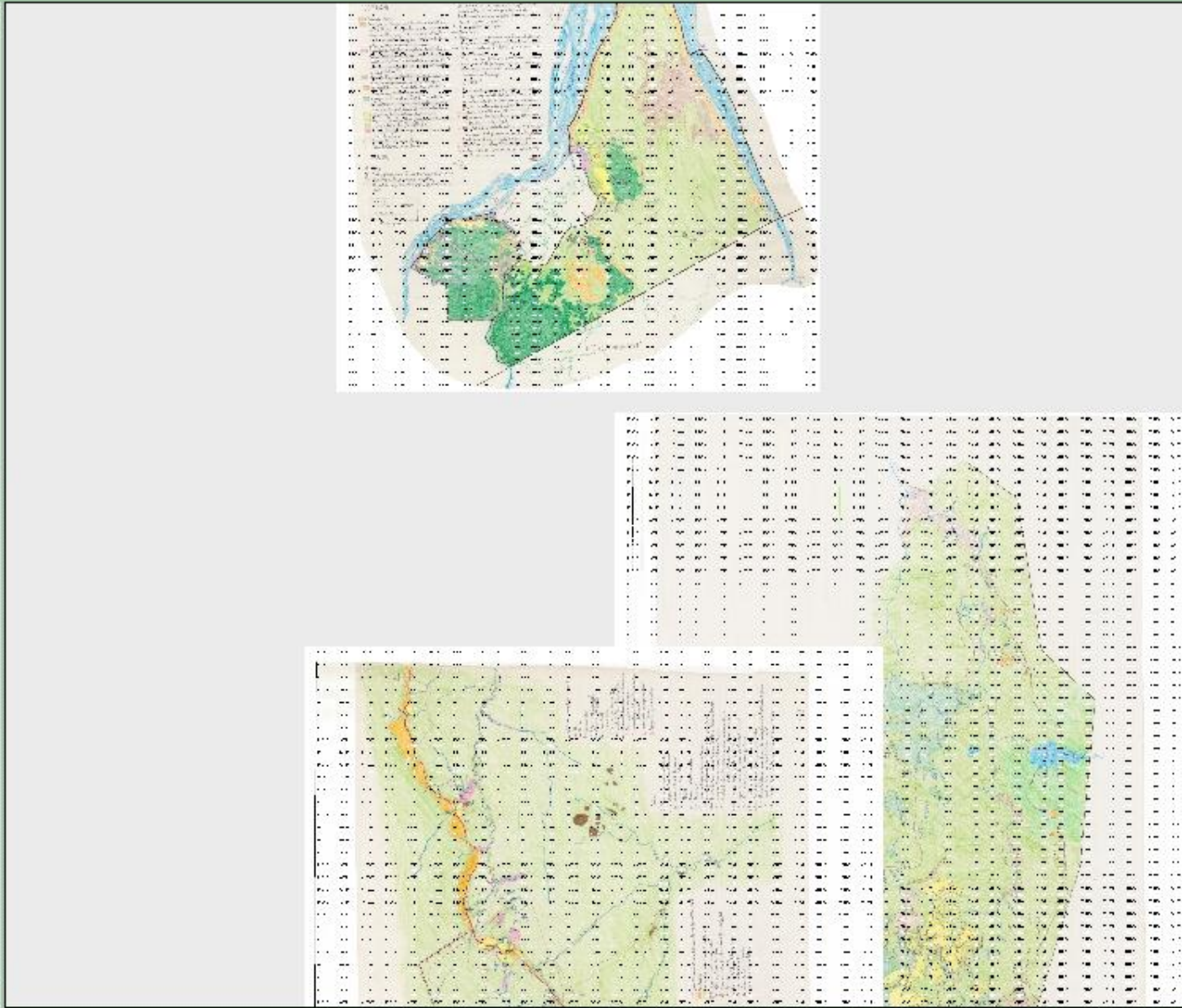




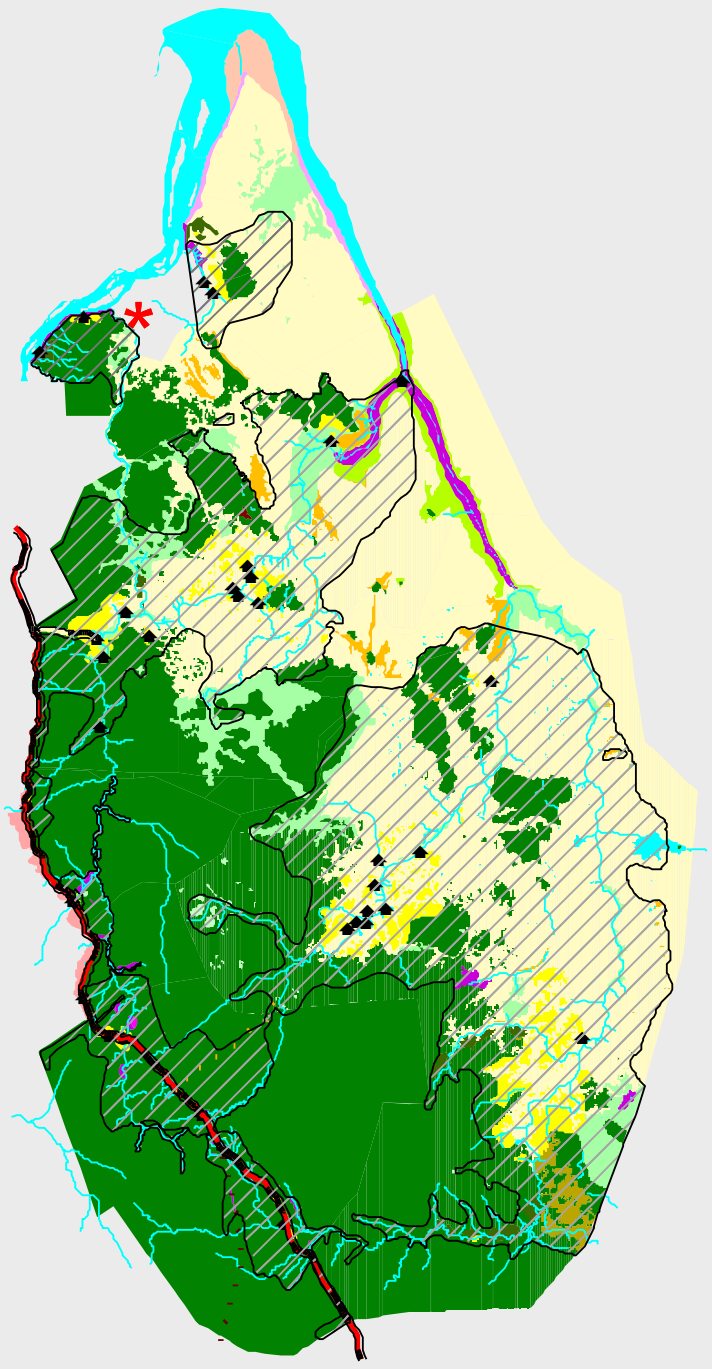
Scale 1: 2,020,665,535

389,005.35
441,827.14

- Registr7.tif
- Registr6.tif
- Registr5.tif
- Registr2.tif
- Tracaja.shp
- Cacanova.shp
- Areaacaca.shp
- Pontos.shp
- 1
- 2
- 3
- 4
- 5
- 6
- 7
- 8
- 9
- 10
- 11
- 12
- 13
- Areaacaca.shp
- Lagobr.shp
- Locali.shp
- 1
- 2
- 3
- 4
- 5
- Num_seta.shp





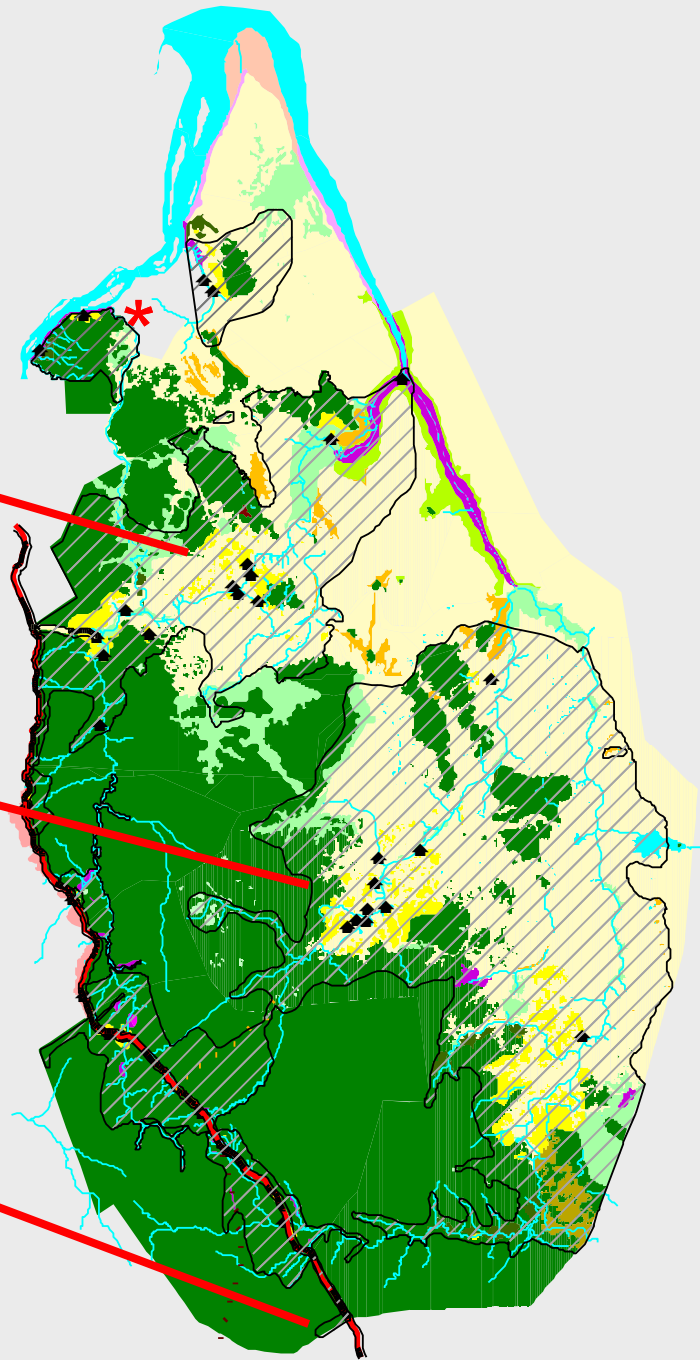


Indigenous Land Management Plan

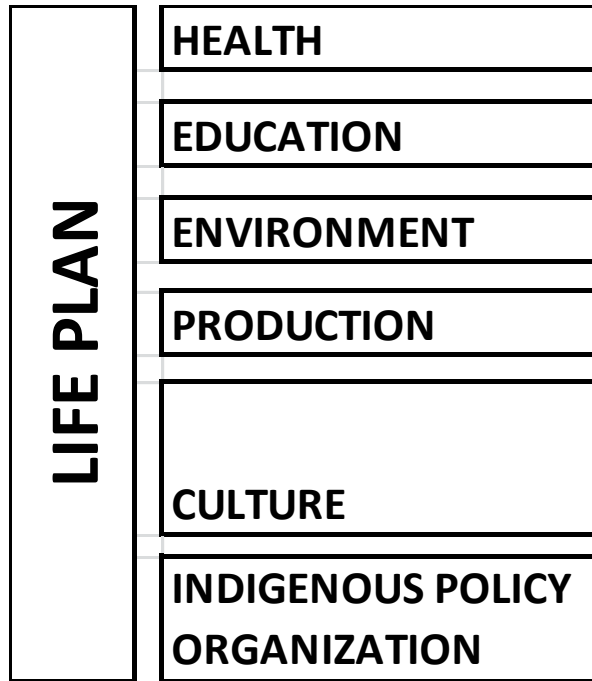
Hunting and fishing zone

Forest products extraction zone

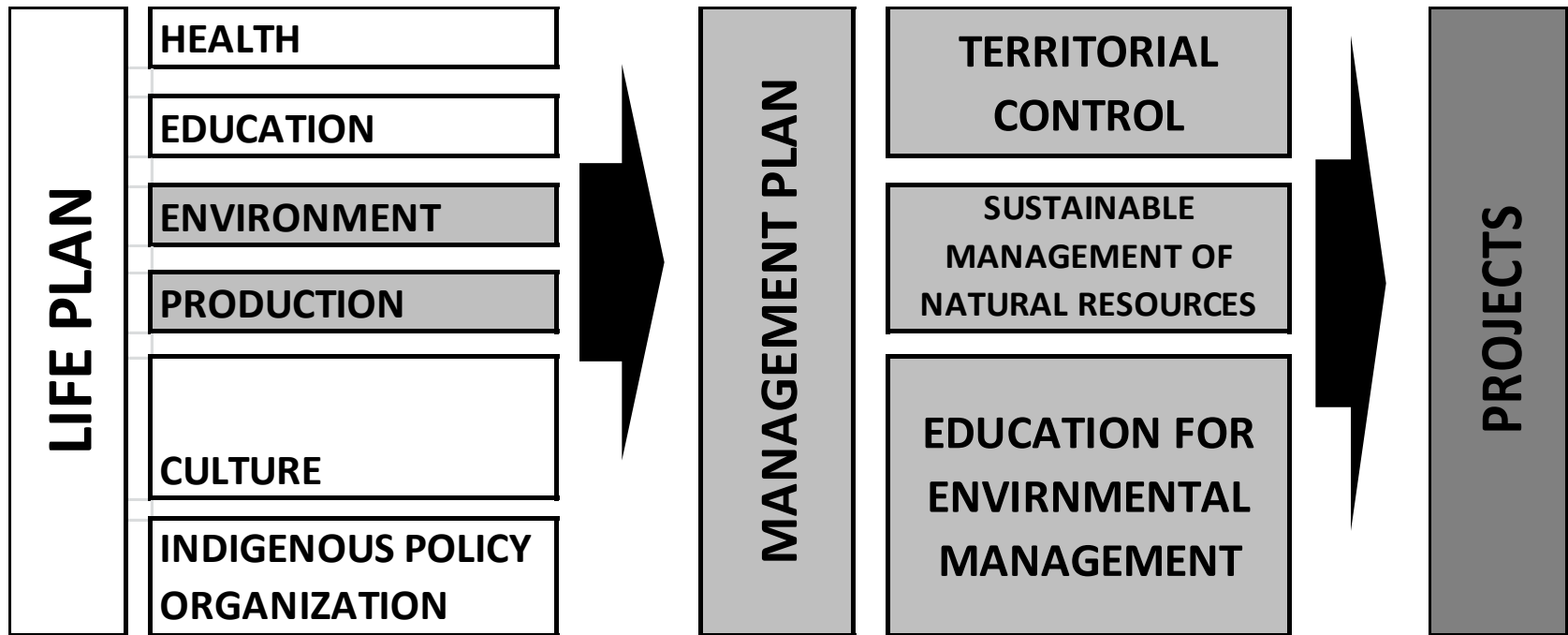
Management agreements with neighboring park and farms



Recapping...



Recapping...



A photograph of a rural village with several huts featuring thatched roofs. The huts are situated on a slight rise, with a river or stream flowing through the foreground. The background is filled with dense, lush green trees, suggesting a tropical or subtropical environment. The overall scene is peaceful and idyllic. The text is overlaid on the image in a bold, black, sans-serif font.

Pilot sites

**Adequate public policies and
sustainable finance**

Indigenous capacity building

At the same time we were learning at the
pilot site ...

... we were also
ensuring
indigenous
federations had the
tools to dialogue
with government
regarding the legal
framework of their
lands management

HOW?



Brazilian National Policy of Indigenous Lands management

Aiming at *promoting*:

- Protection
- Restoration
- Conservation
- Sustainable use of natural resources

and *ensuring*:

- Improvement of local wellbeing
- Full conditions for physical and cultural reproduction
- Self determination

PNGATI
June 2012

Brazilian National Policy of Indigenous Lands management

- Recognizes **ethnozoning** and **ethnomapping** as tools for indigenous land management
- Recognizes **indigenous lands environmental management plans** as official guides for public investment in indigenous lands

Lessons

- Policy empowerment did work very nicely;
- Administrative and financial strengthening was much harder;
- Government also needed to increase capacities;
- Link environment with other local demands – indeed, they are not isolated aspects;
- Invest in monitoring;

Challenges

- Participatory approach takes time;
- Local buy in is seldom seen as *concrete* a result;
- Indigenous organizations capacity;
- Multi-faceted government policies;
- Intermittent funding;

Next steps

- Fully implement pilot management plans;
- Enable efficient self monitoring;
- Establish 51 new management plans in the next 4 years
- Ensure finance flow from public budgets
- Engage private sector

MAKE THE POLICY EFFECTIVE

Indigenous Lands and TNC Forest & Climate Strategy in the Amazon

- 4.5 million hectares of São Félix do Xingu municipality are Indigenous Lands (53% of total area);
- One of the reference areas of the PNGATI is in São Félix do Xingu
- Brazilian government has supported no REDD+ program in indigenous lands. But is leading the Policy implementation.
- Management plans clearly describes local needs and priorities

Thank you

